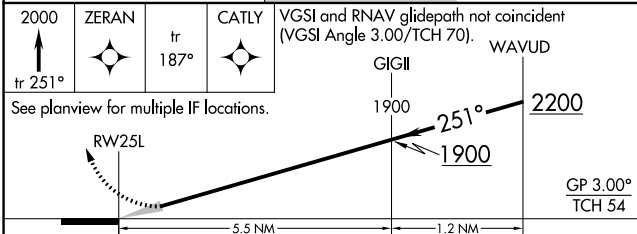
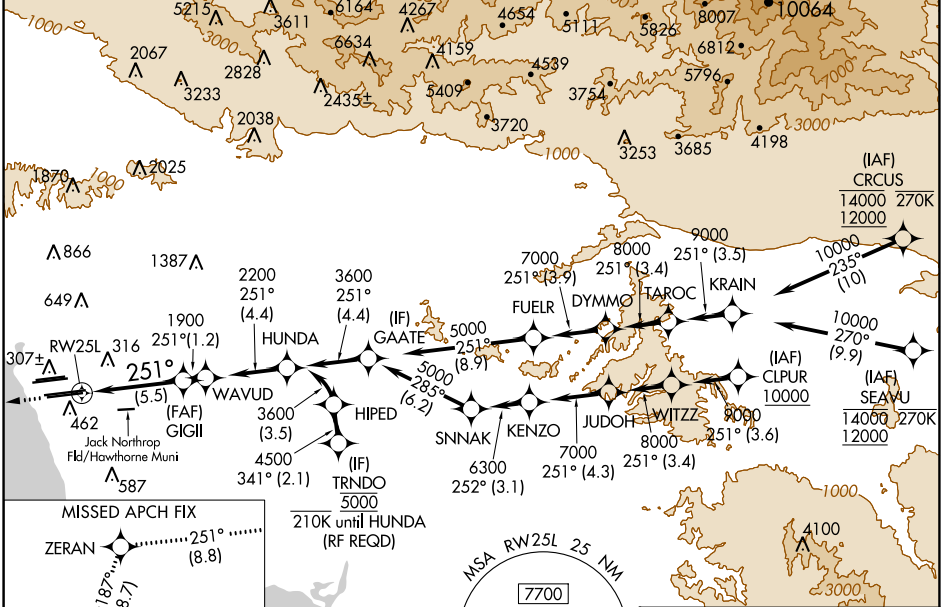


APP CRS	Rwy Idg	11095
251°	TDZE	104
	Apf Elev	128

RNAV (RNP) Z RWY 25L

LOS ANGELES INTL (LAX)

RNP AR APCH. ▼ GPS required. For uncompensated Baro-VNAV systems, procedure NA below 5°C or above 54°C. Simultaneous approach authorized. Simultaneous approach authorized with HHR.				ALSF-2 		MISSED APPROACH: Climb to 2000 on track 251° to ZERAN and on track 187° to CATLY and hold.			
D-ATIS ARR 133.8 DEP 135.65		SOCAL APP CON 124.3 363.2 <small>(APCH FM WEST) (225°-044°)</small> 124.5 235.975 <small>(090°-224°) (045°-089°)</small>		LOS ANGELES TOWER N 133.9 239.3 S 120.95 379.1		GND CON N 121.65 327.0 S 121.75 327.0 W 121.4 327.0		CLNC DEL 120.35 327.0	CPDLC



CATEGORY	A	B	C	D
RNP 0.15 DA		445/30	341 (400- $\frac{5}{8}$)	
RNP 0.30 DA		543/50	439 (500-1)	

ELEV 128 **D** TDZE 104

AUTHORIZATION REQUIRED

TDZ/CL Rwws 6R, 7L, 24R, and 25L
HIRL all Rwws

SW-3, 03 OCT 2024 to 31 OCT 2024

SW-3, 03 OCT 2024 to 31 OCT 2024