

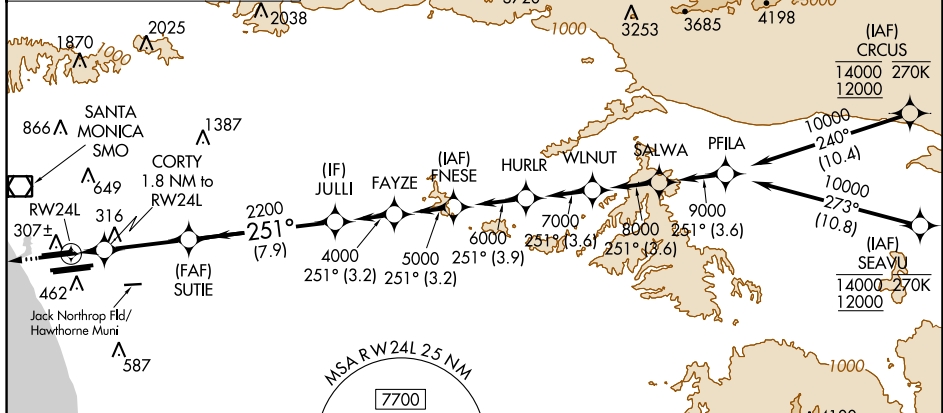
WAAS CH 56407 W24B	APP CRS 251°	Rwy Idg TDZE Apt Elev	9483 123 128
--	------------------------	-----------------------------	---

RNAV (GPS) Y RWY 24L

LOS ANGELES INTL (LAX)

<p>RNP APCH.</p> <p>▼ Simultaneous approach authorized. LNAV procedure NA during simultaneous operations. Use of FD or AP providing RNAV track guidance required during simultaneous operations. Simultaneous approach authorized with HHR. For uncompensated Baro-VNAV systems, LNAV/VNAV NA below 5°C or above 54°C. For inop ALS, increase LNAV/VNAV all Cats visibility to 1½ SM. #RVR 1800 authorized with use of FD or AP or HUD to DA.</p>		<p>MALSR</p>	<p>MISSED APPROACH:</p> <p>Climb to 2000 direct JAKOS and on track 263° to RAFFS and hold.</p>
---	--	--------------	--

D-ATIS ARR 133.8 DEP 135.65	SOCAL APP CON 124.3 363.2 (APCH FM WEST) 124.9 269.0 (090°-224°) 128.5 360.7 (045°-089°)	LOS ANGELES TOWER N 133.9 239.3 S 120.95 379.1	GND CON N 121.65 327.0 S 121.75 327.0 W 121.4 327.0	CLNC DEL 120.35 327.0	CPDLC
---	---	--	---	---	-------



ELEV 128	D	TDZE 123
----------	----------	----------

TDZ/CL Rwy's 6R, 7L, 24R, and 25L
HIRL all Rwy's

2000	JAKOS	tr 263°	RAFFS	VGSIs and RNAV glidepath not coincident (VGSi Angle 3.00/TCH 79).
<p>*LNAV only</p> <p>CORTY 1.8 NM to RW24L</p> <p>RW24L</p> <p>SUTIE 2200</p> <p>JULLI 4000</p> <p>GP 3.00° TCH 59</p>				
1.8 NM		4.6 NM		7.9 NM

CATEGORY	A	B	C	D
LPV DA#		323/24	200 (200-½)	
LNAV/VNAV DA		608/50	485 (500-1)	
LNAV MDA	660/24	537 (600-½)	660/55	537 (600-1)

SW-3, 03 OCT 2024 to 31 OCT 2024

SW-3, 03 OCT 2024 to 31 OCT 2024