


| | | |
|--|------------------------|--|
| WAAS CH 69603 W07B | APP CRS 071° | Rwy Idg 11095 TDZE 128 Apt Elev 128 |
|--|------------------------|--|

RNAV (GPS) Y RWY 7R

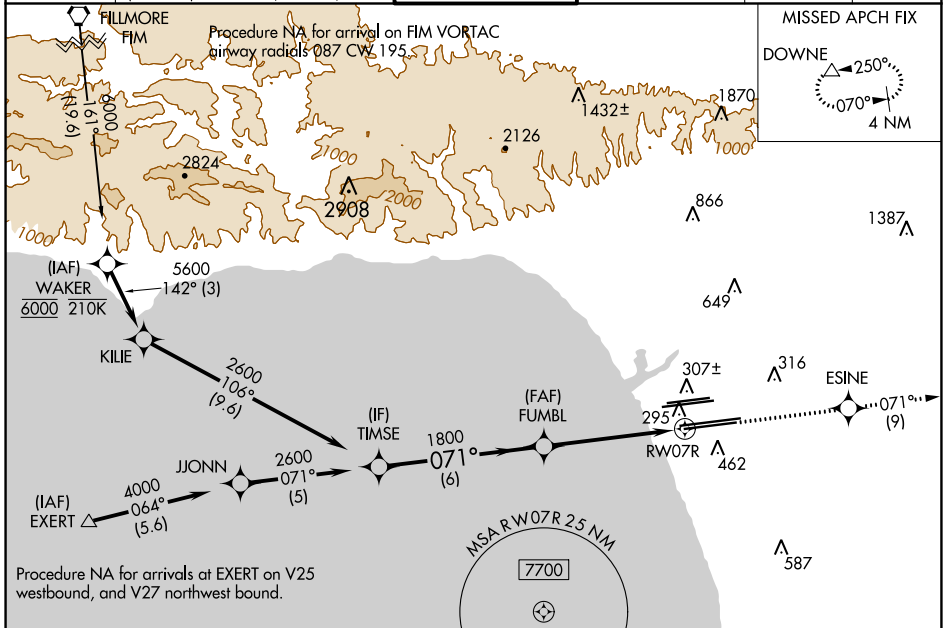
LOS ANGELES INTL (LAX)

▼ For uncompensated Baro-VNAV systems, LNAV/VNAV NA below 5°C (41°F) or above 54°C (130°F). DME/DME RNP-0.3 NA. Simultaneous approach authorized. LNAV procedure NA during simultaneous operations. Use of FD or AP providing RNAV track guidance required during simultaneous operations. # RVR 1800 authorized with use of FD or AP or HUD to DA.

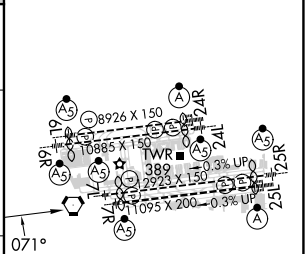
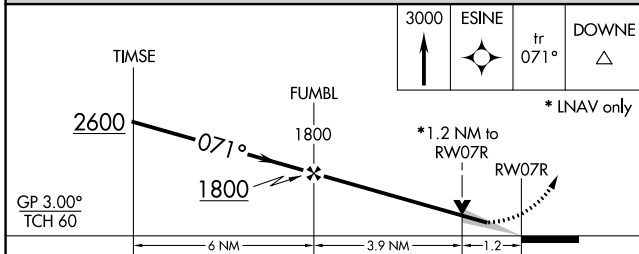
MALSR 

MISSED APPROACH: Climb to 3000 direct ESINE and on track 071° to DOWNE and hold.

| | | | | | |
|---|--|--|---|---|-------|
| D-ATIS ARR 133.8 DEP 135.65 | SOCAL APP CON 124.3 363.2 124.9 269.0 (APCH FM WEST) (090°-224°) 124.5 235.975 128.5 360.7 (225°-044°) (045°-089°) | LOS ANGELES TOWER N 133.9 239.3 S 120.95 379.1 | GND CON N 121.65 327.0 S 121.75 327.0 W 121.4 327.0 | CLNC DEL 120.35 327.0 | CPDLC |
|---|--|--|---|---|-------|



| | |
|----------|-------------------|
| ELEV 128 | D TDZE 128 |
|----------|-------------------|



| CATEGORY | A | B | C | D |
|--------------|--------|-------------|-------------|-------------|
| LPV DA# | | 328/24 | 200 (200-½) | |
| LNAV/VNAV DA | | 462/30 | 334 (400-¾) | |
| LNAV MDA | 560/24 | 432 (500-½) | 560/40 | 432 (500-¾) |

TDZ/CL Rws 6R, 7L, 24R, and 25L
HIRL all Rws

SW-3, 03 OCT 2024 to 31 OCT 2024

SW-3, 03 OCT 2024 to 31 OCT 2024