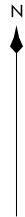


SOCAL APP CON
124.5 235.975
D-ATIS ARR
133.8

(SADDE: SADDE8) 23334
SADDE EIGHT ARRIVAL

AL-237 (FAA)

LOS ANGELES INTL (LAX)
LOS ANGELES, CALIFORNIA



AVENAL
117.1 AVE
Chan 118

SHAFTER
115.4 EHF
Chan 101

PALMDALE
115.55 PMD
Chan 102(Y)

SAN MARCUS
114.9 RZS
Chan 96

FILLMORE
112.5 FIM
Chan 72

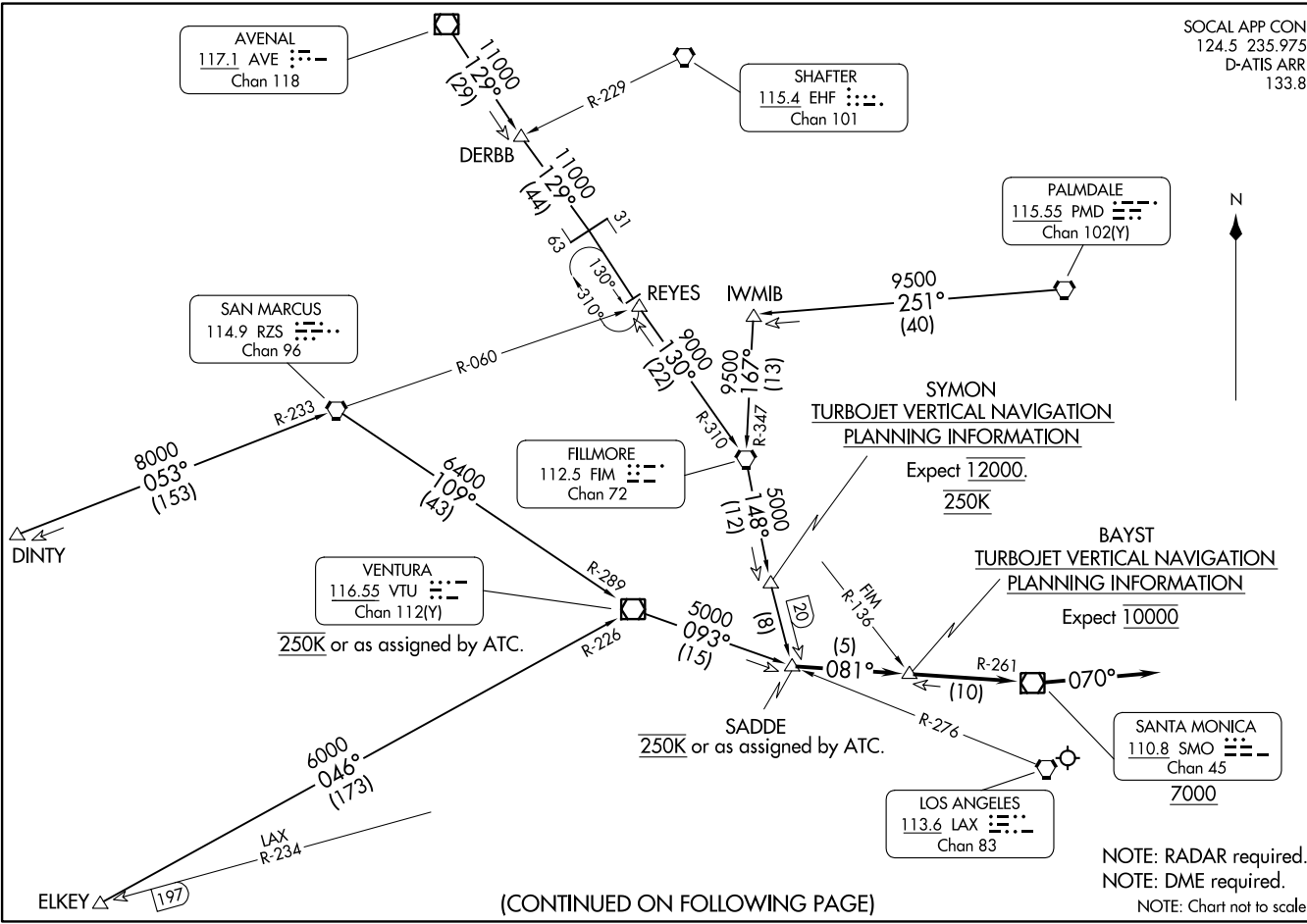
VENTURA
116.55 VTU
Chan 112(Y)

LOS ANGELES
113.6 LAX
Chan 83

SANTA MONICA
110.8 SMO
Chan 45
7000

SADDE EIGHT ARRIVAL
(SADDE: SADDE8) 07DECI7

LOS ANGELES, CALIFORNIA
LOS ANGELES INTL (LAX)



(CONTINUED ON FOLLOWING PAGE)

NOTE: RADAR required.
NOTE: DME required.
NOTE: Chart not to scale.

ARRIVAL ROUTE DESCRIPTION

AVENAL TRANSITION (AVE.SADDE8): From over AVE VOR/DME on AVE R-129 and FIM R-310 to FIM VORTAC, then on FIM R-148 to SADDE. Thence. . . .

DERBB TRANSITION (DERBB.SADDE8): From over DERBB on AVE R-129 and FIM R-310 to FIM VORTAC, then on FIM R-148 to SADDE. Thence. . . .

DINTY TRANSITION (DINTY.SADDE8): From over DINTY on RZS R-233 to RZS VORTAC, then on RZS R-109 and VTU R-289 to VTU VOR/DME, then on VTU R-093 to SADDE. Thence. . . .

ELKEY TRANSITION (ELKEY.SADDE8): From over ELKEY on VTU R-226 to VTU VOR/DME then on VTU R-093 to SADDE. Thence. . . .

FILLMORE TRANSITION (FIM.SADDE8): From over FIM VORTAC on FIM R-148 to SADDE. Thence. . . .

PALMDALE TRANSITION (PMD.SADDE8): From over PMD VORTAC on PMD R-251 and FIM R-347 to FIM VORTAC, then on FIM R-148 to SADDE. Thence. . . .

SAN MARCUS TRANSITION (RZS.SADDE8): From over RZS VORTAC on RZS R-109 and VTU R-289 to VTU VOR/DME, then on VTU R-093 to SADDE. Thence. . . .

VENTURA TRANSITION (VTU.SADDE8): From over VTU VOR/DME on VTU R-093 to SADDE. Thence. . . .

. . . From SADDE on SMO VOR/DME R-261 to cross SMO VOR/DME at or above 7000. Then on heading 070°. Expect RADAR vectors to final approach course.

LOST COMMUNICATIONS

In the event of lost communications proceed on the ILS or LOC RWY 24R.

SW-3, 03 OCT 2024 to 31 OCT 2024

SW-3, 03 OCT 2024 to 31 OCT 2024