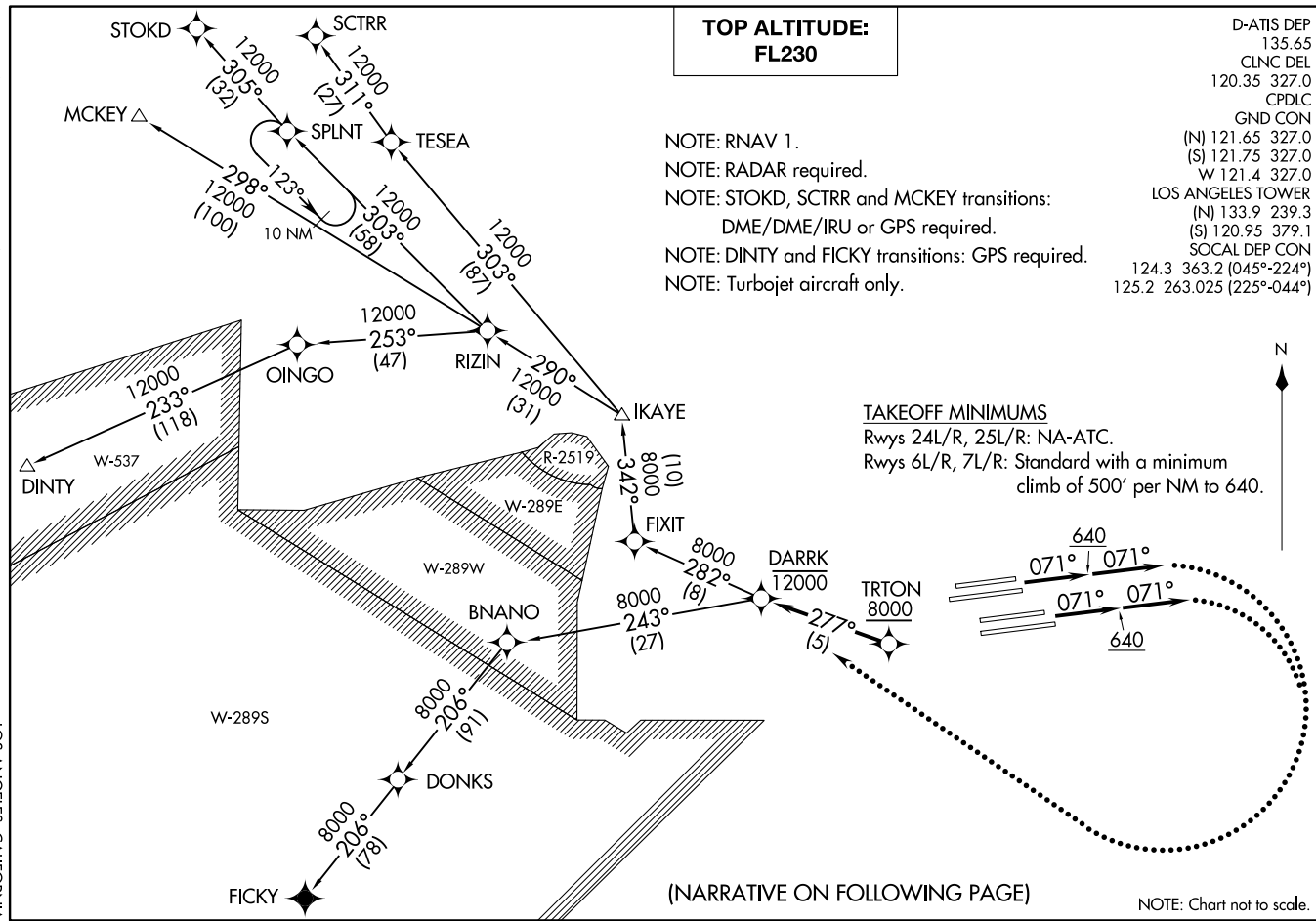


TRITON TWO DEPARTURE (RNAV)
(TRITON2, TRITON) 01 FEB 18

LOS ANGELES, CALIFORNIA
LOS ANGELES INTL (LAX)

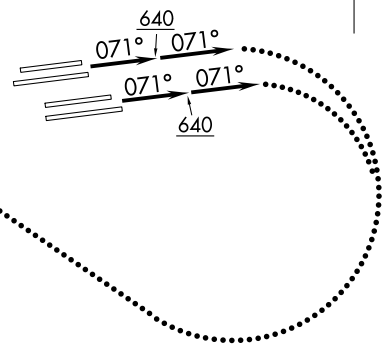


TOP ALTITUDE:
FL230

- NOTE: RNAV 1.
- NOTE: RADAR required.
- NOTE: STOKD, SCTRR and MCKEY transitions:
DME/DME/IRU or GPS required.
- NOTE: DINTY and FICKY transitions: GPS required.
- NOTE: Turbojet aircraft only.

D-ATIS DEP
135.65
CLNC DEL
120.35 327.0
CPDLC
GND CON
(N) 121.65 327.0
(S) 121.75 327.0
W 121.4 327.0
LOS ANGELES TOWER
(N) 133.9 239.3
(S) 120.95 379.1
SOCAL DEP CON
124.3 363.2 (045°-224°)
125.2 263.025 (225°-044°)

TAKEOFF MINIMUMS
Rwys 24L/R, 25L/R: NA-ATC.
Rwys 6L/R, 7L/R: Standard with a minimum
climb of 500' per NM to 640.



(NARRATIVE ON FOLLOWING PAGE)

NOTE: Chart not to scale.

(TRITON2, TRITON) 18032
TRITON TWO DEPARTURE (RNAV)

AL-237 (FAA)

LOS ANGELES INTL (LAX)
LOS ANGELES, CALIFORNIA



DEPARTURE ROUTE DESCRIPTION

TAKEOFF RUNWAYS 6L/R, 7L/R: Climb on heading 071° to 640, then climb on heading 071° or as assigned by ATC, expect vectors to cross TRTON at or above 8000, then on track 277° to cross DARRK at or below 12000, thence. . . .

. . . .on (transition) maintain FL230. Expect filed altitude 5 minutes after departure.

LOST COMMUNICATIONS

If not in contact with departure control within 5 minutes after departure, turn right and proceed direct DARRK WP, cross DARRK at or below 12000'. Climb to FL230 or filed altitude, whichever is lower, and when able proceed direct filed route or assigned route/fix/transition. Aircraft filing FL240 or above, climb to filed altitude ten minutes after departure.

DINTY TRANSITION (TRTON2.DINTY)

FICKY TRANSITION (TRTON2.FICKY)

MCKEY TRANSITION (TRTON2.MCKEY)

SCTRR TRANSITION (TRTON2.SCTRR)

STOKD TRANSITION (TRTON2.STOKD)

SW-3, 03 OCT 2024 to 31 OCT 2024

SW-3, 03 OCT 2024 to 31 OCT 2024