

(WNNDY3.WNNDY) 19003

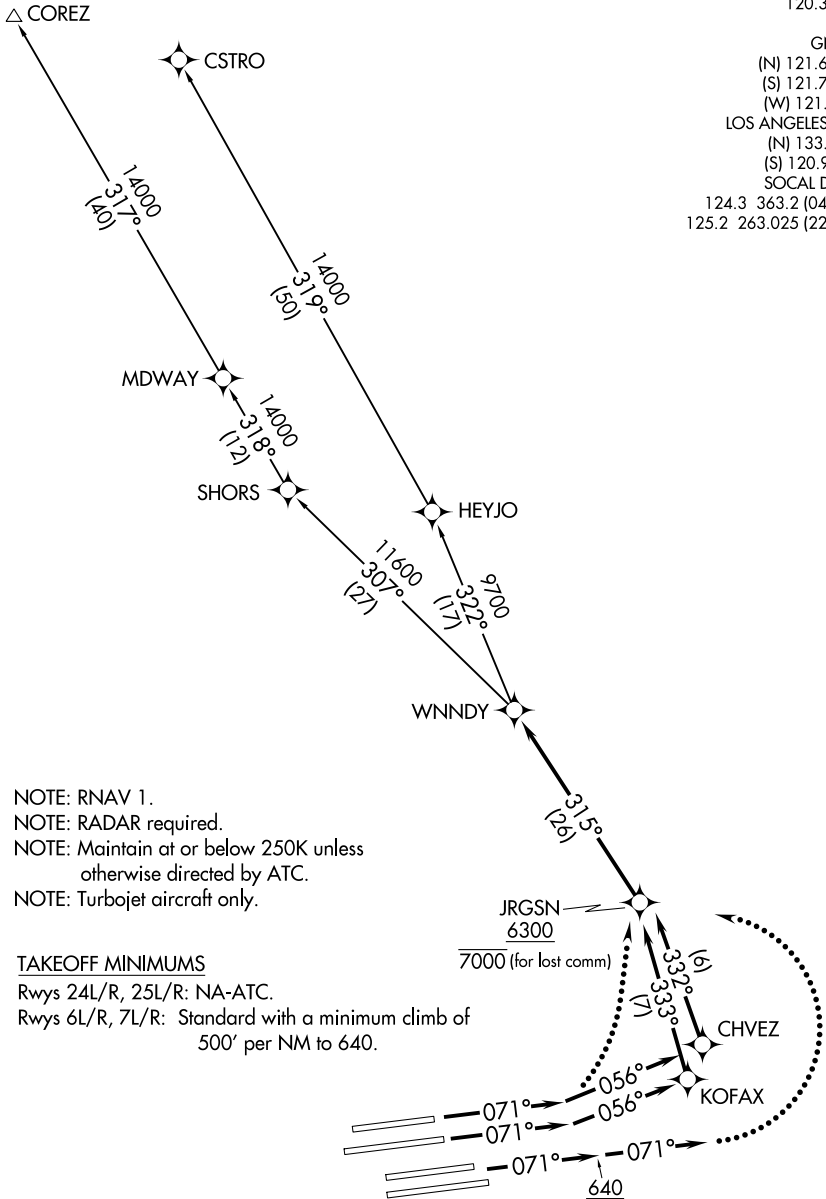
WNNDY THREE DEPARTURE (RNAV)

AL-237 (FAA)

LOS ANGELES INTL (LAX)
LOS ANGELES, CALIFORNIA

**TOP ALTITUDE:
FL230**

D-ATIS DEP 135.65
 CLNC DEL 120.35 327.0
 CPDLC
 GND CON (N) 121.65 327.0
 (S) 121.75 327.0
 (W) 121.4 327.0
 LOS ANGELES TOWER (N) 133.9 239.3
 (S) 120.95 379.1
 SOCAL DEP CON 124.3 363.2 (045°-224°)
 125.2 263.025 (225°-044°)



SW-3, 03 OCT 2024 to 31 OCT 2024

SW-3, 03 OCT 2024 to 31 OCT 2024

(NARRATIVE ON FOLLOWING PAGE)

NOTE: Chart not to scale.

WNNDY THREE DEPARTURE (RNAV)

(WNNDY3.WNNDY) 03JAN19

LOS ANGELES, CALIFORNIA
LOS ANGELES INTL (LAX)



DEPARTURE ROUTE DESCRIPTION

TAKEOFF RUNWAY 6L: Climb heading 071° to intercept course 056° to CHVEZ, then on track 332° to cross JRGSN at or above 6300, then on track 315° to WNNDY, thence. . . .

TAKEOFF RUNWAY 6R: Climb heading 071° to intercept course 056° to KOFAX, then on track 333° to cross JRGSN at or above 6300, then on track 315° to WNNDY, thence. . . .

TAKEOFF RUNWAYS 7L/R: Climb heading 071° to 640, then on heading 071° or as assigned by ATC, for vectors to cross JRGSN at or above 6300, then on track 315° to WNNDY, thence. . . .

. . . .on (transition) maintain FL230. Expect filed altitude 5 minutes after departure.

LOST COMMUNICATIONS

If not in contact with departure control within 5 minutes after departure, turn left and proceed direct JRGSN WP, cross JRGSN at or below 7000. Climb to FL230 or filed altitude whichever is lower, and when able proceed direct filed or assigned route/fix/transition. Aircraft filing FL240 or above, climb to filed altitude ten minutes after departure.

COREZ TRANSITION (WNNDY3.COREZ)

CSTRO TRANSITION (WNNDY3.CSTRO)

SW-3, 03 OCT 2024 to 31 OCT 2024

SW-3, 03 OCT 2024 to 31 OCT 2024