

BNGOS FOUR DEPARTURE (RNAV)  
(BNGOS4.BNGOS) 21 MAR 24

Departure Routes

MIAMI, FLORIDA  
MIAMI INTL (MIA)

BNGOS See following page for transition routes.

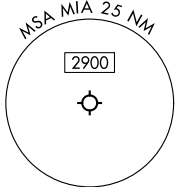
RNAV-1 DME/DME/IRU or GPS.  
RADAR required.

**TOP ALTITUDE:**  
**5000**

MIAMI DEP CON  
119.45 290.325  
D-ATIS  
133.675  
CLNC DEL  
135.35  
CPDLC  
GND CON  
(Rwys 8L/R, 12, 26L/R)  
121.8 348.6  
(Rwys 9, 27, 30)  
127.5 348.6  
MIAMI TOWER  
118.3 256.9

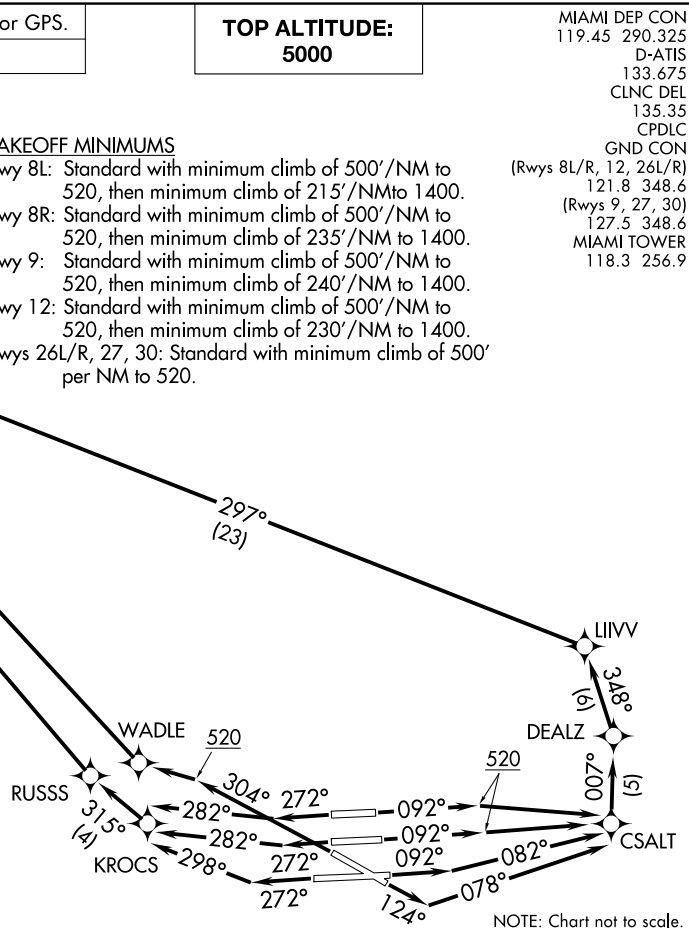
**TAKEOFF MINIMUMS**

- Rwy 8L: Standard with minimum climb of 500'/NM to 520, then minimum climb of 215'/NM to 1400.
- Rwy 8R: Standard with minimum climb of 500'/NM to 520, then minimum climb of 235'/NM to 1400.
- Rwy 9: Standard with minimum climb of 500'/NM to 520, then minimum climb of 240'/NM to 1400.
- Rwy 12: Standard with minimum climb of 500'/NM to 520, then minimum climb of 230'/NM to 1400.
- Rwys 26L/R, 27, 30: Standard with minimum climb of 500' per NM to 520.



NOTE: Jet aircraft only.  
NOTE: Accelerate to 250K until leaving 10000, if unable, advise ATC.  
NOTE: MERKS Transition ATC assigned only except aircraft landing: MKY, RSW, APF, PGD and FMY.

(CONTINUED ON FOLLOWING PAGE)



NOTE: Chart not to scale.

(BNGOS4.BNGOS) 24081  
BNGOS FOUR DEPARTURE (RNAV)

AL-257 (FAA)  
Departure Routes

MIAMI INTL (MIA)  
MIAMI, FLORIDA

(BNGOS4.BNGOS) 24081

AL-257 (FAA)

MIAMI INTL (MIA)  
MIAMI, FLORIDA

# BNGOS FOUR DEPARTURE (RNAV) Transition Routes

RNAV-1 DME/DME/IRU or GPS.	<b>TOP ALTITUDE: 5000</b>	MIAMI DEP CON 119.45 290.325 D-ATIS 133.675 CLNC DEL 135.35 CPDLC GND CON (Rwys 8L/R, 12, 26L/R) 121.8 348.6 (Rwys 9, 27, 30) 127.5 348.6 MIAMI TOWER 118.3 256.9
RADAR required.		

NOTE: Jet aircraft only.  
 NOTE: Accelerate to 250K until leaving 10000, if unable, advise ATC.  
 NOTE: MERKS Transition ATC assigned only except aircraft landing: MKY, RSW, APF, PGD and FMY.

**TAKEOFF MINIMUMS**

Rwy 8L: Standard with minimum climb of 500'/NM to 520, then minimum climb of 215'/NM to 1400.  
 Rwy 8R: Standard with minimum climb of 500'/NM to 520, then minimum climb of 235'/NM to 1400.  
 Rwy 9: Standard with minimum climb of 500'/NM to 520, then minimum climb of 240'/NM to 1400.  
 Rwy 12: Standard with minimum climb of 500'/NM to 520, then minimum climb of 230'/NM to 1400.  
 Rwys 26L/R, 27, 30: Standard with minimum climb of 500'/NM to 520.

NOTE: Chart not to scale.

SE-3, 03 OCT 2024 to 31 OCT 2024

SE-3, 03 OCT 2024 to 31 OCT 2024

**DEPARTURE ROUTE DESCRIPTION**  
SEE ADDITIONAL REQUIREMENTS ON AAUP

**TAKEOFF RUNWAYS 8L/R:** Climb on heading 092° to 520, then direct CSALT, then on track 007° to DEALZ, then on track 348° to LIIVV, then on track 297° to NIBLT, then on track 312° to cross MRENO at or above 5000, thence. . .

**TAKEOFF RUNWAY 9:** Climb on heading 092° to intercept course 082° to CSALT, then on track 007° to DEALZ, then on track 348° to LIIVV, then on track 297° to NIBLT, then on track 312° to cross MRENO at or above 5000, thence. . .

**TAKEOFF RUNWAY 12:** Climb on heading 124° to intercept course 078° to CSALT, then on track 007° to DEALZ, then on track 348° to LIIVV, then on track 297° to NIBLT, then on track 312° to cross MRENO at or above 5000, thence. . .

**TAKEOFF RUNWAYS 26L/R:** Climb on heading 272° to intercept course 282° to KROCS, then on track 315° to RUSSS, then on track 325° to cross MRENO at or above 5000, thence. . .

**TAKEOFF RUNWAY 27:** Climb on heading 272° to intercept course 298° to KROCS, then on track 315° to RUSSS, then on track 325° to cross MRENO at or above 5000, thence. . .

**TAKEOFF RUNWAY 30:** Climb on heading 304° to 520, then direct WADLE, then on track 323° to cross MRENO at or above 5000, thence. . .

. . . on track 322° to BNGOS, then on transition, maintain 5000, expect clearance to filed altitude within 10 minutes after departure.

COREA TRANSITION (BNGOS4.COREA)  
DOLIE TRANSITION (BNGOS4.DOLIE)  
MERKS TRANSITION (BNGOS4.MERKS)

**BNGOS FOUR DEPARTURE (RNAV) Transition Routes**  
(BNGOS4.BNGOS) 21MAR24

MIAMI, FLORIDA  
MIAMI INTL (MIA)