

(DORRL2.DORRL) 24081

AL-257*(FAA)

MIAMI INTL (MIA)
MIAMI, FLORIDA

DORRL TWO DEPARTURE (RNAV)

MIAMI DEP CON
119.45 290.325
D-ATIS
133.675
CLNC DEL
135.35
CPDLC
GND CON
(Rwys 8L/8R, 12, 26L/26R)
121.8 348.6
(Rwys 9, 27, 30)
127.5 348.6
MIAMI TOWER
118.3 256.9

**TOP ALTITUDE:
ASSIGNED BY ATC**

RNAV 1 - DME/DME/IRU or GPS.

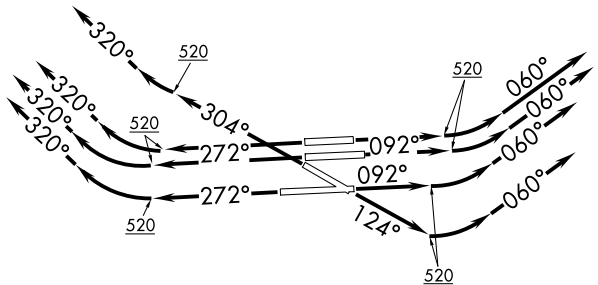
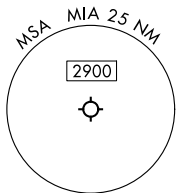
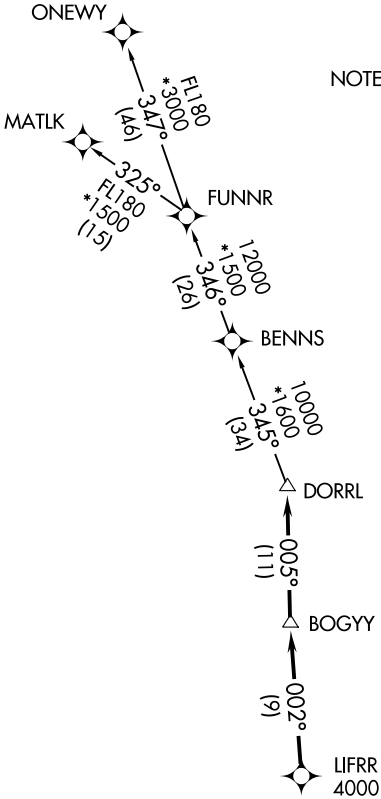
RADAR required.

TAKEOFF MINIMUMS

Rwys 8L/R, 9, 12, 26L/R, 27, 30:

Standard with minimum climb of 500'/NM to 520.

NOTE: For turbo-props/props filed at or above 13000.



(CONTINUED ON FOLLOWING PAGE)

NOTE: Chart not to scale.

SE-3, 03 OCT 2024 to 31 OCT 2024

SE-3, 03 OCT 2024 to 31 OCT 2024

DORRL TWO DEPARTURE (RNAV)

(DORRL2.DORRL) 21MAR24

MIAMI, FLORIDA
MIAMI INTL (MIA)

DORRL TWO DEPARTURE (RNAV)



DEPARTURE ROUTE DESCRIPTION SEE ADDITIONAL REQUIREMENTS ON AAUP

TAKEOFF RUNWAYS 8L/R, 9: Climb on heading 092° to 520, then climbing left turn heading 060° or as assigned by ATC for vectors to cross LIFRR at or above 4000, thence. . . .

TAKEOFF RUNWAY 12: Climb on heading 124° to 520, then climbing left turn heading 060° or as assigned by ATC for vectors to cross LIFRR at or above 4000, thence. . . .

TAKEOFF RUNWAYS 26L/R, 27: Climb on heading 272° to 520, then climbing right turn heading 320° or as assigned by ATC for vectors to cross LIFRR at or above 4000, thence. . . .

TAKEOFF RUNWAY 30: Climb on heading 304° to 520, then climbing right turn heading 320° or as assigned by ATC for vectors to cross LIFRR at or above 4000, thence. . . .

. . . .on track 002° to BOGY, then on track 005° to DORRL then on (transition), maintain altitude as assigned by ATC, expect filed altitude 10 minutes after departure.

MATLK TRANSITION (DORRL2.MATLK)

ONEWY TRANSITION (DORRL2.ONEWY)

SE-3, 03 OCT 2024 to 31 OCT 2024

SE-3, 03 OCT 2024 to 31 OCT 2024