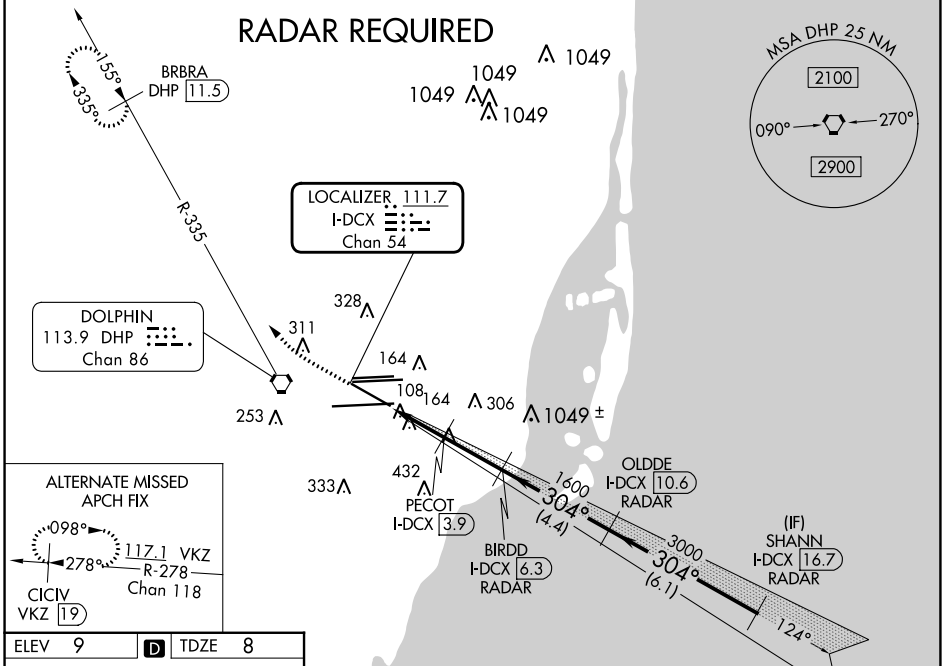


LOC/DME I-DCX <b>111.7</b> Chan <b>54</b>	APP CRS <b>304°</b>	Rwy Idg TDZE Apt Elev	<b>7913</b> <b>8</b> <b>9</b>
---	------------------------	-----------------------------	-------------------------------------

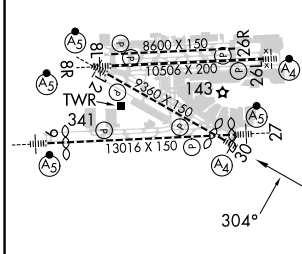
# ILS or LOC RWY 30

MIAMI INTL (MIA)

D-ATIS ARR <b>119.15</b> DEP <b>133.675</b>	MIAMI APP CON <b>124.85 322.3</b>	MIAMI TOWER <b>118.3 256.9</b>	GND CON <b>121.8</b> (8L/8R/12/26L/26R) <b>127.5</b> (9/27/30)	MALS 	MISSED APPROACH: Climb to 800 then climbing right turn to 2000 on heading 310° and DHP VORTAC R-335 to BRBRA/11.5 DME and hold.	CLNC DEL <b>135.35</b>	CPDLC



ELEV 9	<b>D</b>	TDZE 8
--------	----------	--------



TDZ/CL Rwy 8R  
REL Rws 8L and 26R  
HIRL all Rws

FAF to MAP 4.8 NM

Knots	60	90	120	150	180
Min:Sec	4:48	3:12	2:24	1:55	1:36

800 2000 DHP R-335 hdg 310° BRBRA DHP 11.5

VGSI and ILS glidepath not coincident (VGSI Angle 3.00/TCH 71).

\*LOC only.

800	2000	1600	3000	3000	3000
I-DCX 1.5	*I-DCX 2.7	PECOT I-DCX 3.9	BIRDD I-DCX 6.3	OLDDE I-DCX 10.6	SHANN I-DCX 16.7
1.2 NM	1.2 NM	2.4 NM	4.4 NM	6.1 NM	
CATEGORY	A		B	C	D
S-ILS 30	258/40		250 (300-3/4)		
S-LOC 30	460/40	452 (500-3/4)	460/60	452 (500-1 1/4)	
				460-1 1/2	
				452 (500-1 1/2)	

GS 3.00° TCH 51

SE-3, 03 OCT 2024 to 31 OCT 2024

SE-3, 03 OCT 2024 to 31 OCT 2024