

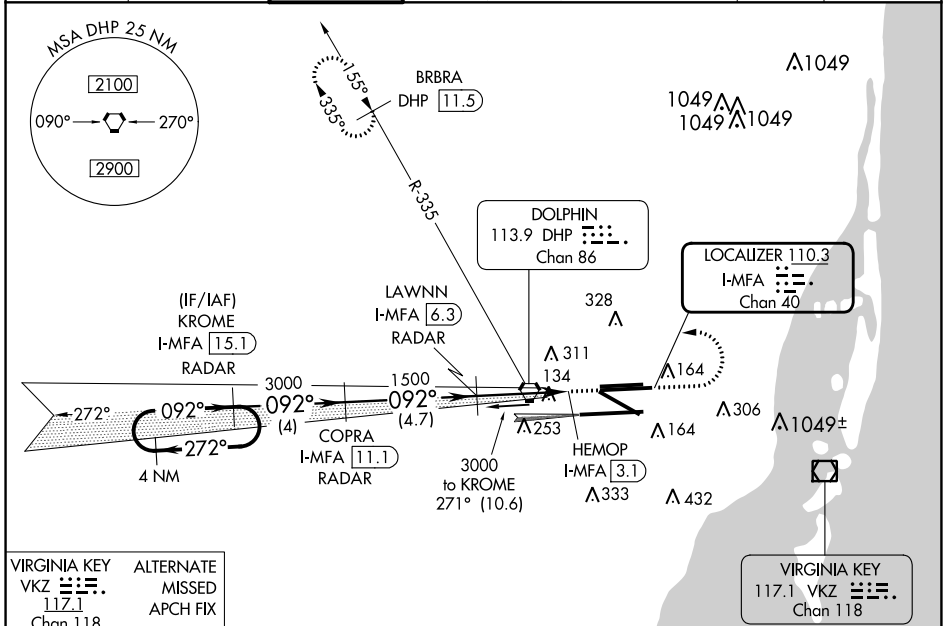
LOC/DME I-MFA 110.3 Chan 40	APP CRS 092°	Rwy Idg 10506 TDZE 8 Apt Elev 9
---	------------------------	--

ILS or LOC RWY 8R

MIAMI INTL (MIA)

DME or RADAR required.		MALSR	MISSED APPROACH: Climb to 800 then climbing left turn to 3000 on heading 270° and on DHP VORTAC R-335 to BRBRA/DHP 11.5 DME and hold.
For inop MALSR, increase S-ILS 8 all Cats visibility to 1½ mile. Simultaneous approach authorized with Rwy 9.			

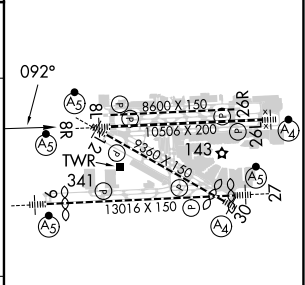
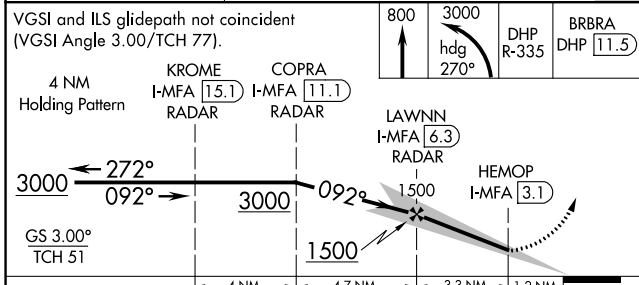
D-ATIS ARR 119.15 DEP 133.675	MIAMI APP CON 124.85 322.3	MIAMI TOWER 118.3 256.9	GND CON 121.8 (8L/8R/12/26L/26R) 127.5 (9/27/30)	348.6	CLNC DEL 135.35	CPDLC
---	--------------------------------------	-----------------------------------	--	--------------	---------------------------	-------



VIRGINIA KEY VKZ 117.1 Chan 118	ALTERNATE MISSED APCH FIX
---------------------------------------	---------------------------

DME or RADAR REQUIRED

ELEV 9	TDZE 8
--------	--------



CATEGORY	A	B	C	D
S-ILS 8R	450/50 442 (500-1)			
S-LOC 8R	560/50 552 (600-1)			560/60 552 (600-1½)
FAF to MAP 3.3 NM				
Knots	60	90	120	150 180
Min:Sec	3:18	2:12	1:39	1:19 1:06

SE-3, 03 OCT 2024 to 31 OCT 2024

SE-3, 03 OCT 2024 to 31 OCT 2024