

MIAMI, FLORIDA

AL-257 (FAA)

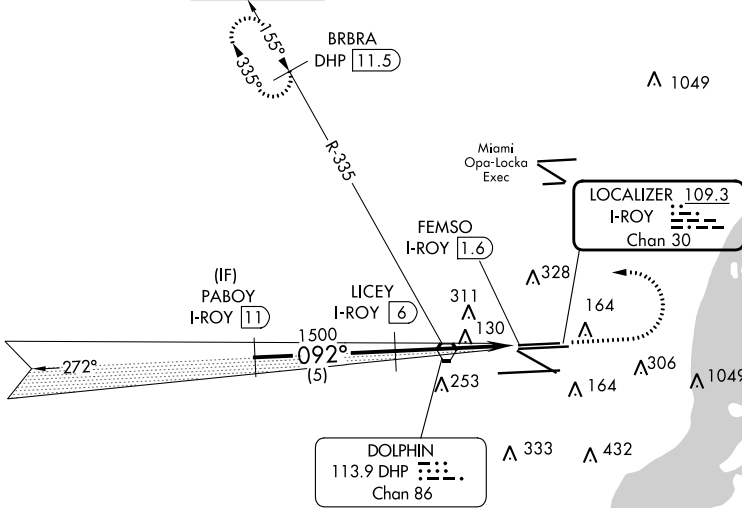
24137

LOC/DME I-ROY <b>109.3</b> Chan <b>30</b>	APP CRS <b>092°</b>	Rwy ldg TDZE Apt Elev	<b>8600</b> <b>9</b> <b>9</b>
---	------------------------	-----------------------------	-------------------------------------

# LOC RWY 8L

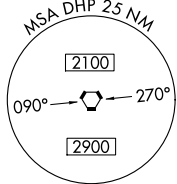
MIAMI INTL (MIA)

DME required. RADAR required for procedure entry.		MISSED APPROACH: Climb to 800 then climbing left turn to 3000 on heading 270° and DHP VORTAC R-335 to BRBRA/DHP 11.5 DME and hold.			
▼ Rwy 8L helicopter visibility reduction below ¾ SM NA.					
D-ATIS ARR <b>119.15</b> DEP <b>133.675</b>	MIAMI APP CON <b>124.85 322.3</b>	MIAMI TOWER <b>118.3 256.9</b>	GND CON <b>121.8</b> (8L/8R/12/26L/26R) <b>127.5</b> (9/27/30)	CLNC DEL <b>348.6</b>	CPDLC

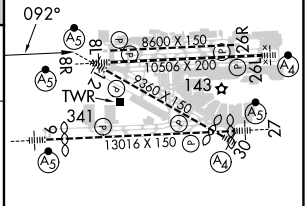
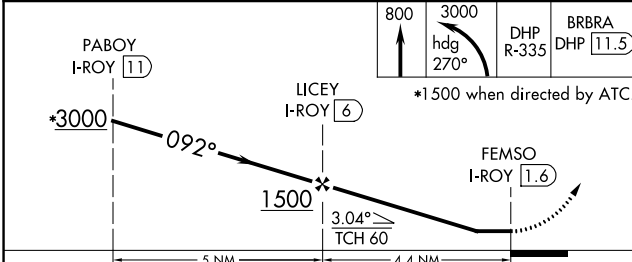


SE-3, 03 OCT 2024 to 31 OCT 2024

SE-3, 03 OCT 2024 to 31 OCT 2024



ELEV 9	<b>D</b> TDZE 9
--------	-----------------



CATEGORY	A	B	C	D
S-8L	440-1	431 (500-1)	440-1¼ 431 (500-1¼)	440-1½ 431 (500-1½)

TDZ/CL Rwy 8R  
REIL Rwys 8L and 26R  
HIRL all Rwys

MIAMI, FLORIDA  
Orig-C 30JAN20

25°48'N-80°17'W

# MIAMI INTL (MIA) LOC RWY 8L