

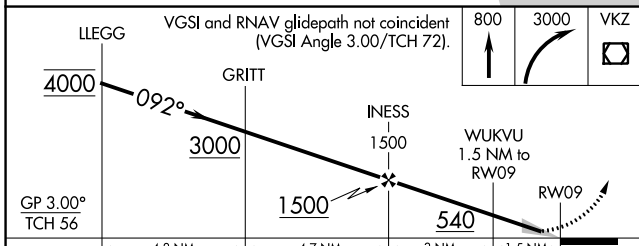
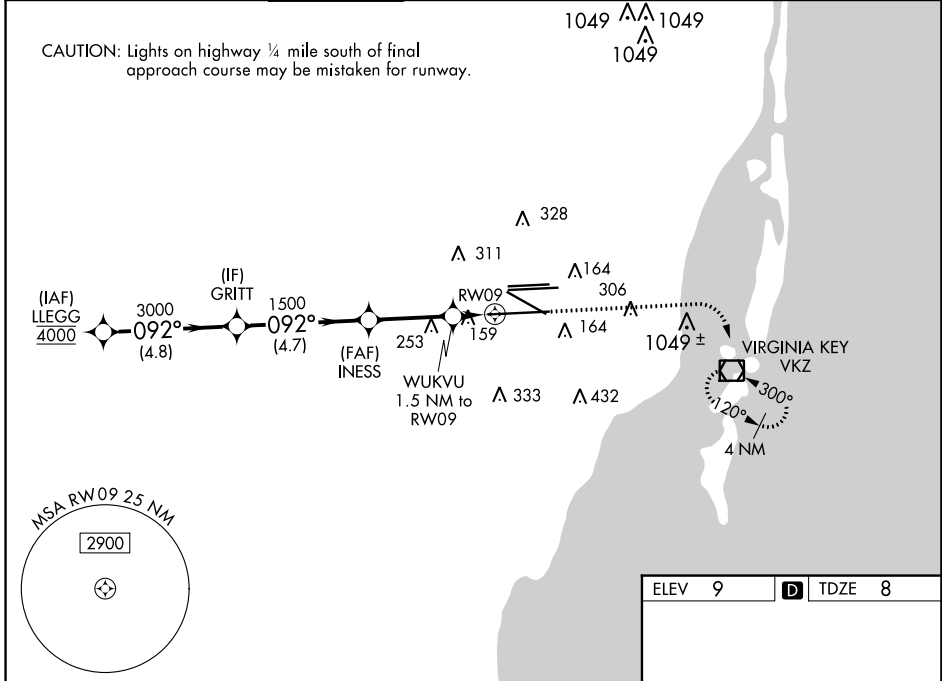
WAAS CH <b>81931</b> <b>W09A</b>	APP CRS <b>092°</b>	Rwy Idg <b>11397</b> TDZE <b>8</b> Apt Elev <b>9</b>
--	------------------------	--

# RNAV (GPS) RWY 9

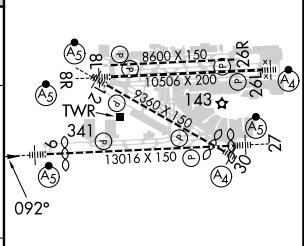
MIAMI INTL (MIA)

RNP APCH - GPS.	MALSRL	MISSED APPROACH: Climb to 800 then climbing right turn to 3000 direct VKZ VOR/DME and hold, continue climb-in-hold to 3000.
<p>▼ For uncompensated Baro-VNAV systems, LNAV/VNAV NA below 8°C or above 54°C. Simultaneous approach authorized. LNAV procedure NA during simultaneous operations. Use of FD or AP required during simultaneous operations. For inop ALS, increase LPV Cat E visibility to RVR 4000, LNAV/VNAV all Cats visibility to RVR 6000, LNAV Cat E visibility to 1<math>\frac{1}{8}</math> SM. *RVR 1800 authorized with use of FD or AP or HUD to DA.</p>		

D-ATIS	MIAMI APP CON	MIAMI TOWER	GND CON	CLNC DEL	CPDLC
ARR <b>119.15</b> DEP <b>133.675</b>	<b>124.85 322.3</b>	<b>118.3 256.9</b>	<b>121.8</b> (Rwys 8L/8R/12/26L/26R) <b>127.5</b> (Rwys 9/27/30)	<b>348.6</b>	



ELEV 9	TDZE 8
--------	--------



CATEGORY	A	B	C	D	E
LPV DA*	208/24		200 (200- $\frac{1}{2}$ )		
LNAV/VNAV DA	426/40		418 (500- $\frac{3}{4}$ )		
LNAV MDA	460/24	452 (500- $\frac{1}{2}$ )	460/45	452 (500- $\frac{7}{8}$ )	

TDZ/CL RWY 8R  
REIL RWYS 8L and 26R  
HIRL all RWYS

SE-3, 03 OCT 2024 to 31 OCT 2024

SE-3, 03 OCT 2024 to 31 OCT 2024