

APP CRS	Rwy Idg	8579
124°	TDZE	8
	Apt Elev	9

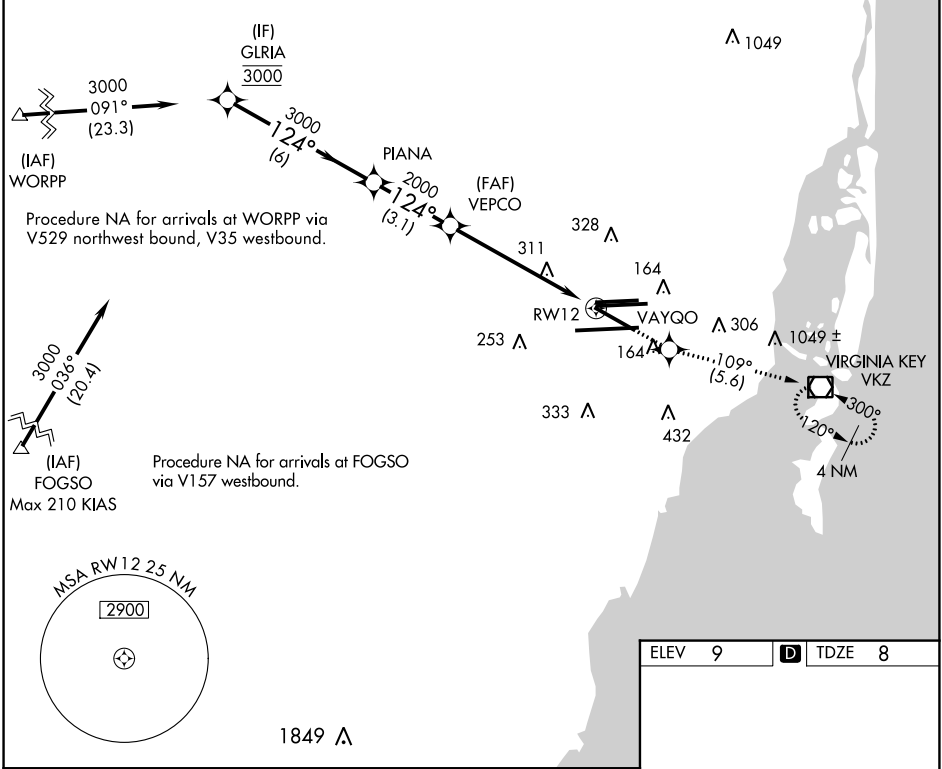
RNAV (RNP) Y RWY 12

MIAMI INTL (MIA)

GPS Required. For inoperative MALSR, increase 0.30 all Cats visibility to 1½. For uncompensated Baro-VNAV systems, procedure NA below 6°C (42°F) or above 49°C (120°F).

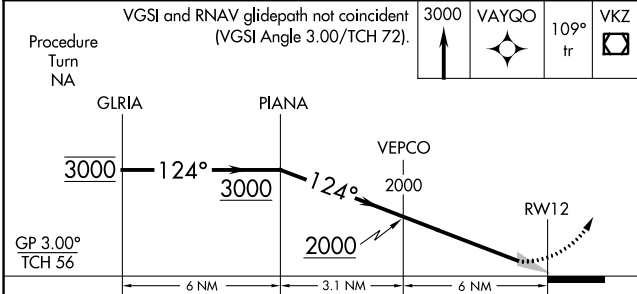
MALSR
MISSED APPROACH: Climb to 3000 direct VAYQO and via 109° track to VKZ VOR/DME and hold, continue climb-in-hold to 3000.

D-ATIS ARR 119.15 DEP 133.675	MIAMI APP CON 124.85 322.3	MIAMI TOWER 118.3 256.9	GND CON 121.8 (8L/8R/12/26L/26R) 127.5 (9/27/30)	348.6	CLNC DEL 135.35	CPDLC
---	--------------------------------------	-----------------------------------	--	--------------	---------------------------	-------

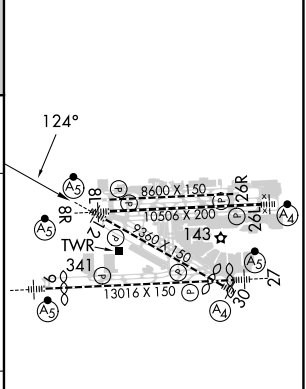


SE-3, 03 OCT 2024 to 31 OCT 2024

SE-3, 03 OCT 2024 to 31 OCT 2024



ELEV 9	TDZE 8
--------	--------



CATEGORY	A	B	C	D
RNP 0.30 DA		461/50	453 (500-1)	

AUTHORIZATION REQUIRED

TDZ/CL Rwy 8R
 REIL Rwy 8L and 26R
 HIRL all Rwy