

MIAMI, FLORIDA

AL-257 (FAA)

24137

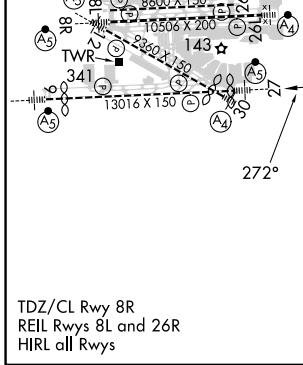
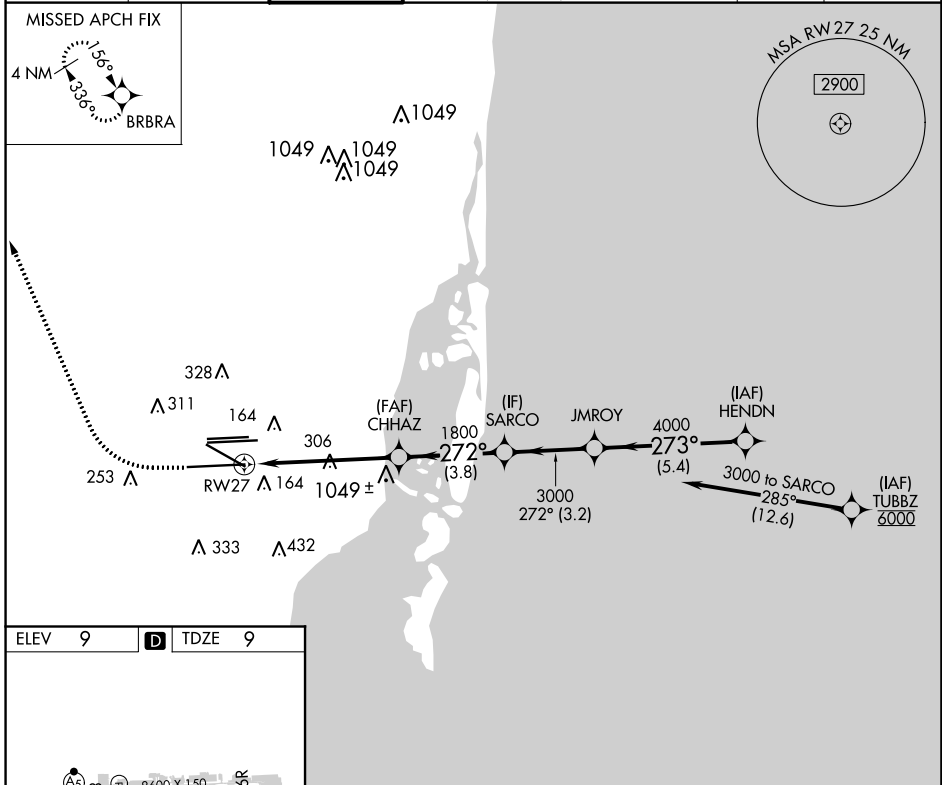
APP CRS	Rwy Idg	12755
272°	TDZE	9
	Apt Elev	9

RNAV (RNP) Z RWY 27

MIAMI INTL (MIA)

RNP AR APCH-GPS.	MALSR	MISSED APPROACH: Climb to 800 then climbing right turn to 4000 direct BRBRA and hold, continue climb-in-hold to 4000.
<p>Simultaneous approach authorized. For uncompensated Baro-VNAV systems, procedure NA below 8°C or above 54°C. For inop ALS, increase RNP 0.11 visibility to RVR 4500 all Cats.</p>		

D-ATIS	MIAMI APP CON	MIAMI TOWER	GND CON	CLNC DEL	CPDLC
ARR 119.15	124.85 322.3	118.3 256.9	121.8 (8L/8R/12/26L/26R)	135.35	
DEP 133.675			127.5 (9/27/30)		



800	4000	BRBRA	VGSI and RNAV glidepath not coincident (VGSI Angle 3.00/TCH 71).	HENDN
				5000
		SARCO	JMROY	
		272°	4000	273°
		1800	3000	
		1800		
		5.5 NM	3.8 NM	3.2 NM
			5.4 NM	

CATEGORY	A	B	C	D
RNP 0.11 DA		327/24	318 (400-1/2)	
RNP 0.30 DA		405/35	396 (400-5/8)	

AUTHORIZATION REQUIRED

MIAMI, FLORIDA
Amdt 3 12AUG21

25°48'N-80°17'W

MIAMI INTL (MIA)

RNAV (RNP) Z RWY 27

SE-3, 03 OCT 2024 to 31 OCT 2024

SE-3, 03 OCT 2024 to 31 OCT 2024