

LOC/DME I-HINN 110.7 Chan 44	APP CRS 301°	Rwy Idg TDZE 822 Apt Elev 842	8000
--	------------------------	---	-------------

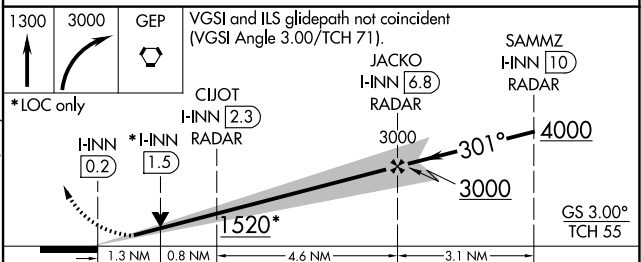
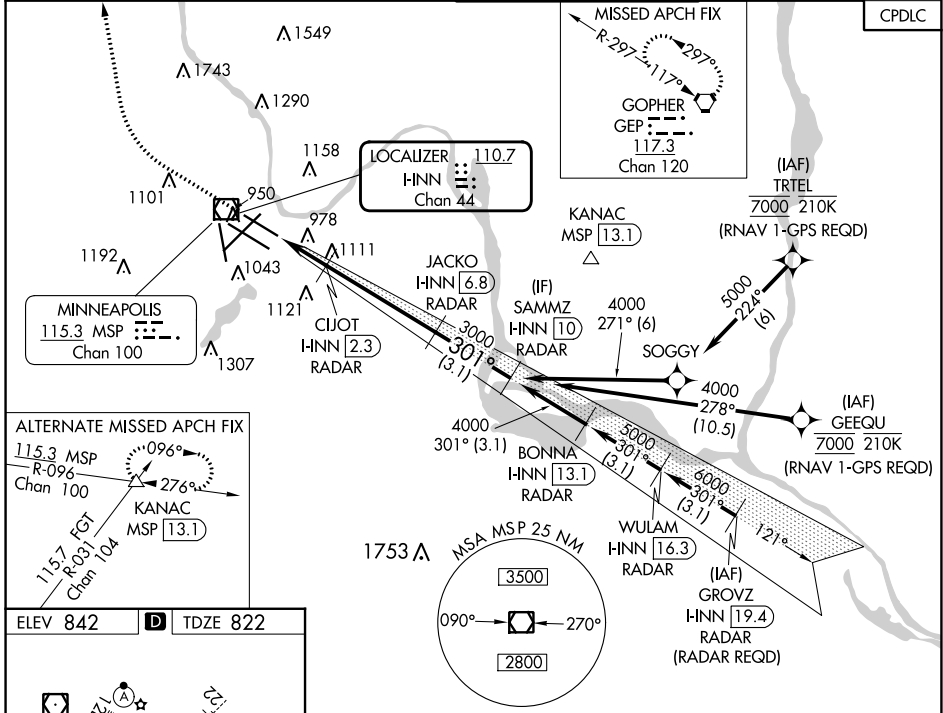
ILS or LOC RWY 30R

MINNEAPOLIS-ST PAUL INTL/WOLD-CHAMBERLAIN (MSP)

⚠ Simultaneous approaches authorized with Rwy 30L and ILS V RWY 35 (CONVERGING). For inop ALS, increase S-LOC 30R Cat D/E visibility to 1 3/8 SM. Inop table does not apply to S-ILS 30R all Cats. DME or RADAR required.

MAJLF MISSED APPROACH: Climb to 1300, then climbing right turn to 3000 direct GEP VORTAC and hold.

D-ATIS ARR 135.35 239.275 DEP 120.8	MINNEAPOLIS APP CON 118.725 335.65 (Rwy 35) 119.3 335.65 (12L-30R, 4-22, 17) 126.95 335.65 (12R-30L)	MINNEAPOLIS TOWER 123.675 273.55 (17-35) 123.95 273.55 (12L-30R) 126.7 273.55 (12R-30L, 4-22)	GND CON N 121.8 348.6 S 121.9 348.6 W 127.925 348.6	CLNC DEL 133.2
--	--	---	---	--------------------------



CATEGORY	A	B	C	D	E
S-ILS 30R	1072/40 250 (300-3/4)				
S-LOC 30R	1320/40 498 (500-3/4)	1320/60 498 (500-1 1/4)			
C CIRCLING	1360-1 518 (600-1)	1460-1 3/4 618 (700-1 3/4)	1660-2 3/4 818 (900-2 3/4)	1800-3 958 (1000-3)	

NC-1, 03 OCT 2024 to 31 OCT 2024

NC-1, 03 OCT 2024 to 31 OCT 2024