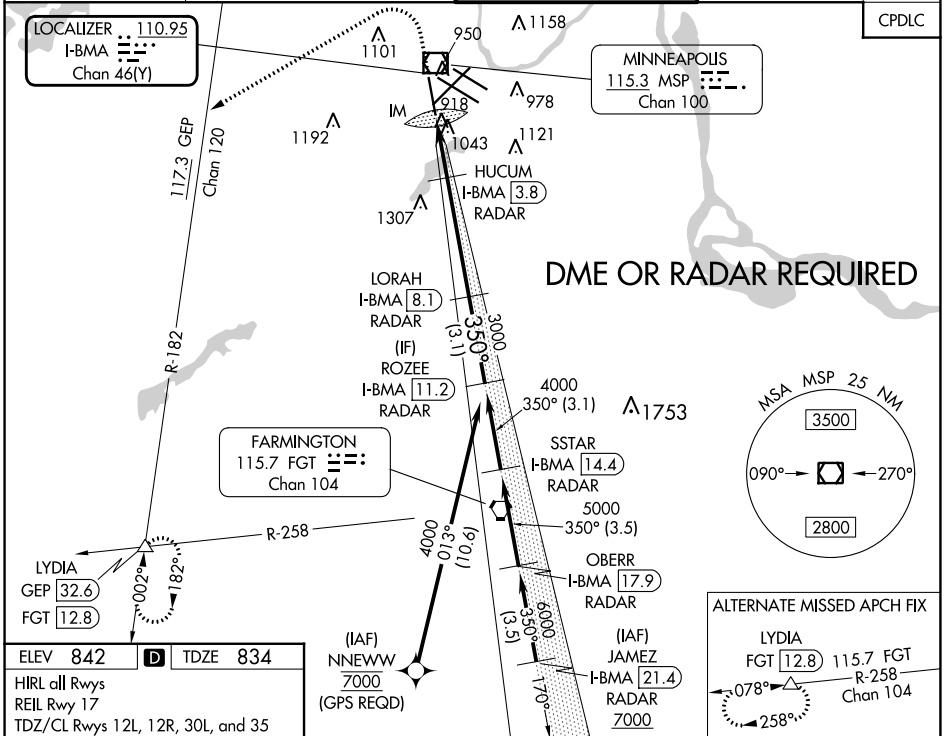


LOC/DME I-BMA <b>110.95</b> Chan <b>46 (Y)</b>	APP CRS <b>350°</b>	Rwy ldg TDZE Apt Elev	<b>8000</b> <b>834</b> <b>842</b>
--	------------------------	-----------------------------	---

# ILS Z or LOC RWY 35

MINNEAPOLIS-ST PAUL INTL/WOLD-CHAMBERLAIN (MSP)

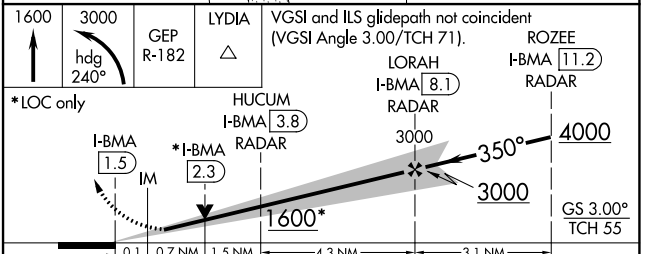
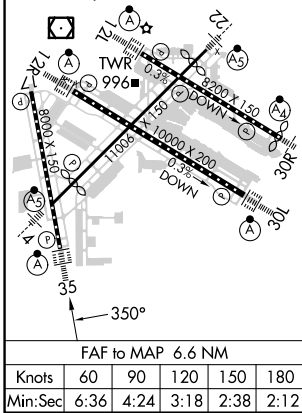
<p><b>▼</b> DME or RADAR required. For inop ALS, increase S-ILS 35 Cat E visibility to RVR 4000 and S-LOC 35 Cats C/D/E visibility to RVR 5500.</p> <p><b>▲</b> ALSF-2</p>	<p>MINNEAPOLIS APP CON</p> <p>ARR <b>118.725 239.275</b> (Rwy 35) <b>119.3 335.65</b> (12L-30R, 4-22, 17)</p> <p>DEP <b>120.8</b> <b>126.95 335.65</b> (12R-30L)</p>		<p>MINNEAPOLIS TOWER</p> <p><b>123.675 273.55</b> (17-35) <b>123.95 273.55</b> (12L-30R) <b>126.7 273.55</b> (12R-30L, 4-22)</p>		<p>GND CON</p> <p><b>N 121.8 348.6</b> <b>S 121.9 348.6</b> <b>W 127.925 348.6</b></p>		<p>CLNC DEL</p> <p><b>133.2</b></p>
	<p>CPDLC</p>						



NC-1, 03 OCT 2024 to 31 OCT 2024

NC-1, 03 OCT 2024 to 31 OCT 2024

ELEV <b>842</b>	<b>D</b>	TDZE <b>834</b>
HIRL all Rwys		
REL Rwy 17		
TDZ/CL Rwys 12L, 12R, 30L, and 35		



<b>C</b> CIRCLING	1360-1	518 (600-1)	1460-1 3/4	1660-2 3/4	1800-3
			618 (700-1 1/4)	818 (900-2 3/4)	958 (1000-3)