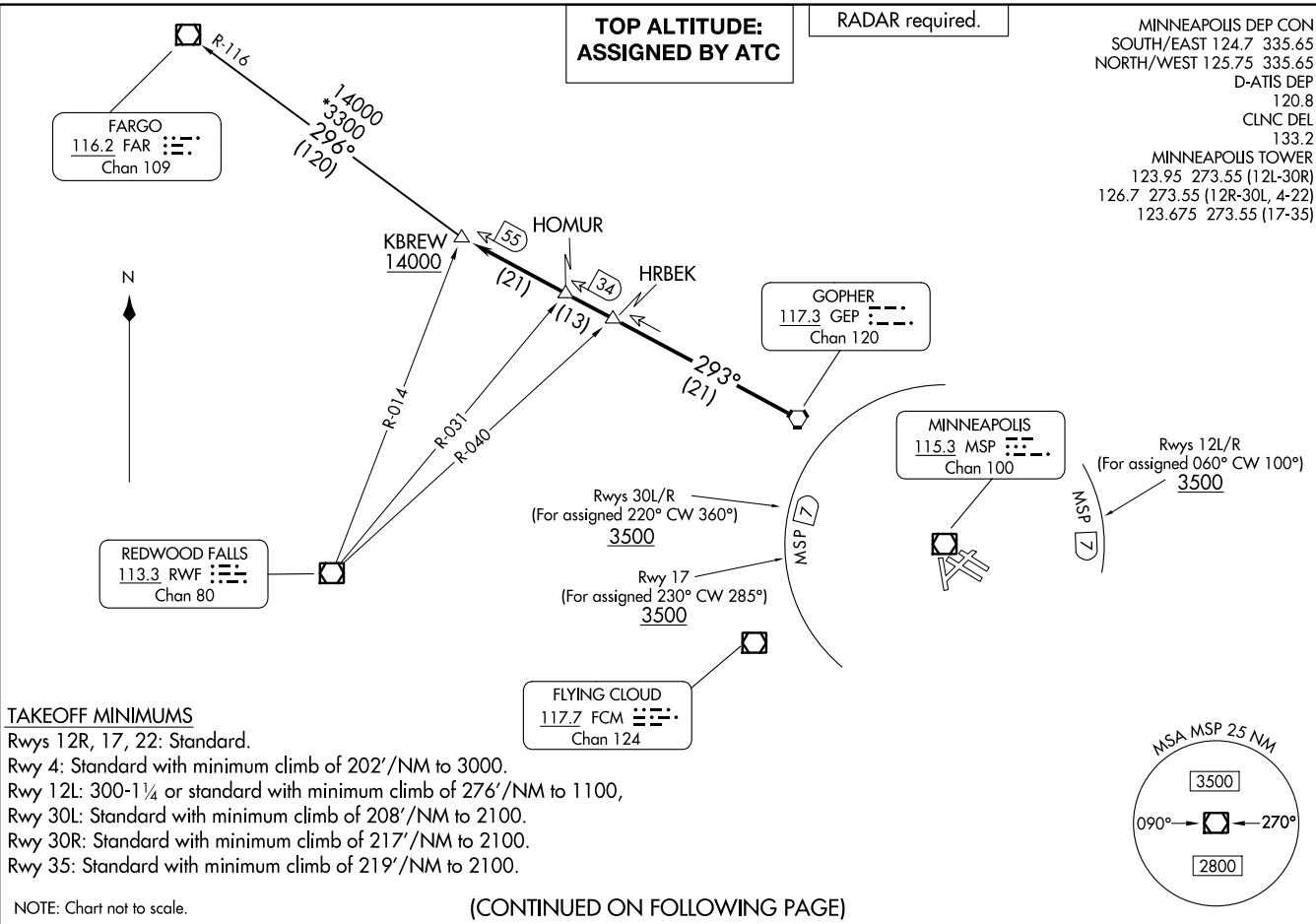


**KBREW TWO DEPARTURE**  
(KBREW2.KBREW) 16MMAY24

MINNEAPOLIS-ST PAUL INTL/WOLD-CHAMBERLAIN (MSP)  
MINNEAPOLIS, MINNESOTA



(KBREW2.KBREW) 24137  
**KBREW TWO DEPARTURE**

MINNEAPOLIS-ST PAUL INTL/WOLD-CHAMBERLAIN (MSP)  
AL-264 (FAA)  
MINNEAPOLIS, MINNESOTA

(CONTINUED ON FOLLOWING PAGE)



DEPARTURE ROUTE DESCRIPTION

TAKEOFF ALL RUNWAYS: Climb on assigned heading for RADAR vectors to GEP VORTAC then on depicted route to KBREW, then on transition. Maintain ATC assigned altitude. Expect filed altitude 10 minutes after departure.

ALL AIRCRAFT: CLIMB GRADIENTS: If unable to accept climb rates, advise ATC prior to taxi.

RUNWAYS 12L/R: For assigned headings from 060° clockwise to 100°, cross MSP VOR/DME 7 DME arc at or above 3500, Rwy 12L: 540'/NM to 3500, Rwy 12R: 542'/NM to 3500.

RUNWAY 17: For assigned headings from 230° clockwise to 285°, cross MSP VOR/DME 7 DME arc at or above 3500, 512'/NM to 3500.

RUNWAYS 30L/R: For assigned headings from 220° clockwise to 360°, cross MSP VOR/DME 7 DME arc at or above 3500, 380'/NM to 3500.

FARGO TRANSITION (KBREW2.FAR): From over KBREW on FAR R-116 to FAR VOR/DME.

NC-1, 03 OCT 2024 to 31 OCT 2024

NC-1, 03 OCT 2024 to 31 OCT 2024