

# MEADOW LAKE FIVE DEPARTURE

AL-264 (FAA)

MINNEAPOLIS, MINNESOTA

**TOP ALTITUDE:  
ASSIGNED BY ATC**

RADAR and DME required.

MINNEAPOLIS DEP CON  
 SOUTH/EAST 124.7 284.7  
 NORTH/WEST 125.75 335.65  
 D-ATIS DEP 120.8  
 CLNC DEL 133.2  
 CPDLC  
 MINNEAPOLIS TOWER  
 123.95 273.55 (12L-30R)  
 126.7 273.55 (12R-30L, 4-22)  
 123.675 273.55 (17-35)

FARGO  
 116.2 FAR  
 Chan 109

DULUTH  
 112.6 DLH  
 Chan 73

ABERDEEN  
 113.0 ABR  
 Chan 77

MINNEAPOLIS  
 115.3 MSP  
 Chan 100

GREEN BAY  
 115.5 GRB  
 Chan 102

RAPID CITY  
 112.3 RAP  
 Chan 70

SIoux FALLS  
 115.0 FSD  
 Chan 97

FARMINGTON  
 115.7 FGT  
 Chan 104

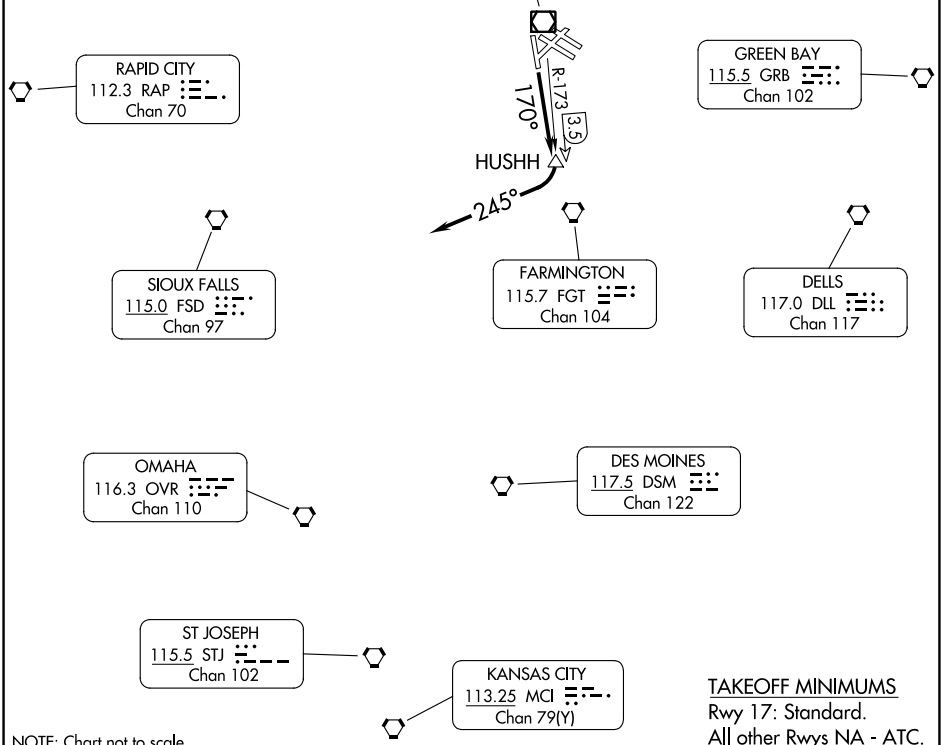
DELLS  
 117.0 DLL  
 Chan 117

OMAHA  
 116.3 OVR  
 Chan 110

DES MOINES  
 117.5 DSM  
 Chan 122

ST JOSEPH  
 115.5 STJ  
 Chan 102

KANSAS CITY  
 113.25 MCI  
 Chan 79(Y)



NC-1, 03 OCT 2024 to 31 OCT 2024

NC-1, 03 OCT 2024 to 31 OCT 2024

NOTE: Chart not to scale.

TAKEOFF MINIMUMS  
 Rwy 17: Standard.  
 All other Rwy's NA - ATC.



## DEPARTURE ROUTE DESCRIPTION

TAKEOFF RUNWAY 17: Climb on heading 170° to HUSHH/MSP VOR/DME 3.5 DME, then right turn heading 245° for vectors to assigned route. Maintain ATC assigned altitude. Expect filed altitude 10 minutes after departure.

# MEADOW LAKE FIVE DEPARTURE

MINNEAPOLIS, MINNESOTA