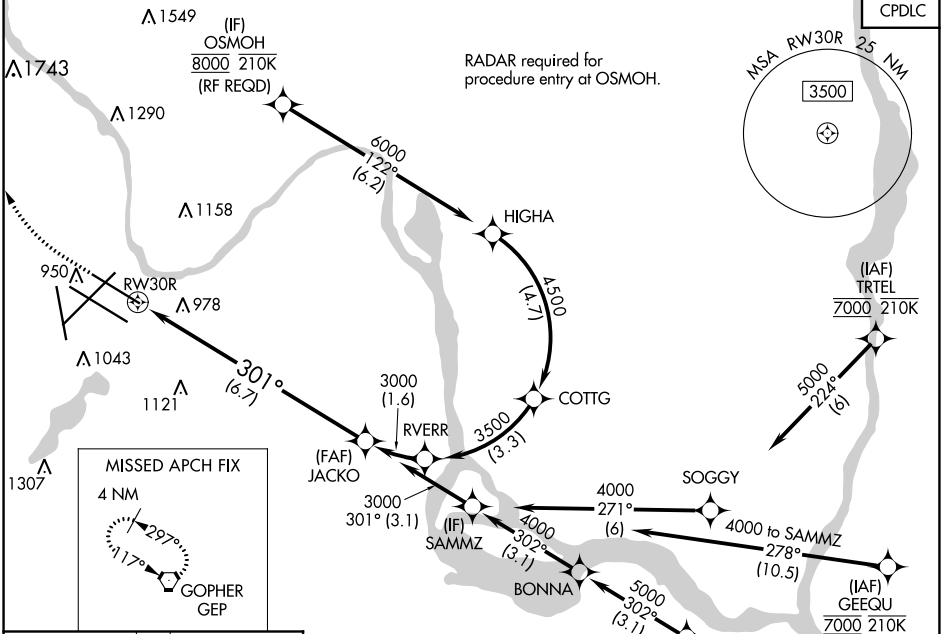


APP CRS	Rwy Idg	<b>8000</b>
<b>301°</b>	TDZE	<b>822</b>
	Apt Elev	<b>842</b>

# RNAV (RNP) Y RWY 30R

MINNEAPOLIS-ST PAUL INTL/WOLD-CHAMBERLAIN (MSP)

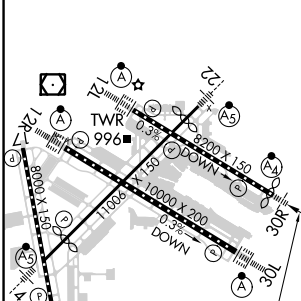
<b>▼</b> For uncompensated Baro-VNAV systems, procedure NA below -1°C (-2°F) or above 54°C (130°F). Simultaneous approach authorized with Rwy 30L and ILS V RWY 35 (CONVERGING). GPS required. For inop ALS, increase RNP 0.15 all Cats visibility to RVR 4500 and RNP 0.30 Cat D visibility to 1½ SM.	MALSF	MISSED APPROACH: Climb to 1300 then climbing right turn to 3000 direct GEP VORTAC and hold.		
			D-ATIS ARR <b>135.35</b> <b>239.275</b> DEP <b>120.8</b>	MINNEAPOLIS APP CON <b>118.725 335.65</b> (Rwy 35) <b>119.3 335.65</b> (12L-30R, 4-22, 17) <b>126.95 335.65</b> (12R-30L)



NC-1, 03 OCT 2024 to 31 OCT 2024

NC-1, 03 OCT 2024 to 31 OCT 2024

ELEV <b>842</b>	<b>D</b>	TDZE <b>822</b>
-----------------	----------	-----------------



HIRL all Rwys
REIL Rwy 17
TDZ/CL Rwys 12L, 12R, 30L, and 35

1300	3000	GEP	VGSI and RNAV glidepath not coincident (VGSI Angle 3.00/TCH 71). See planview for multiple IF locations.	JACKO	3000
CATEGORY		A	B	C	D
RNP 0.15 DA		1097/40		275 (300-¾)	
RNP 0.30 DA		1298-1⅞		476 (500-1⅞)	

## AUTHORIZATION REQUIRED