

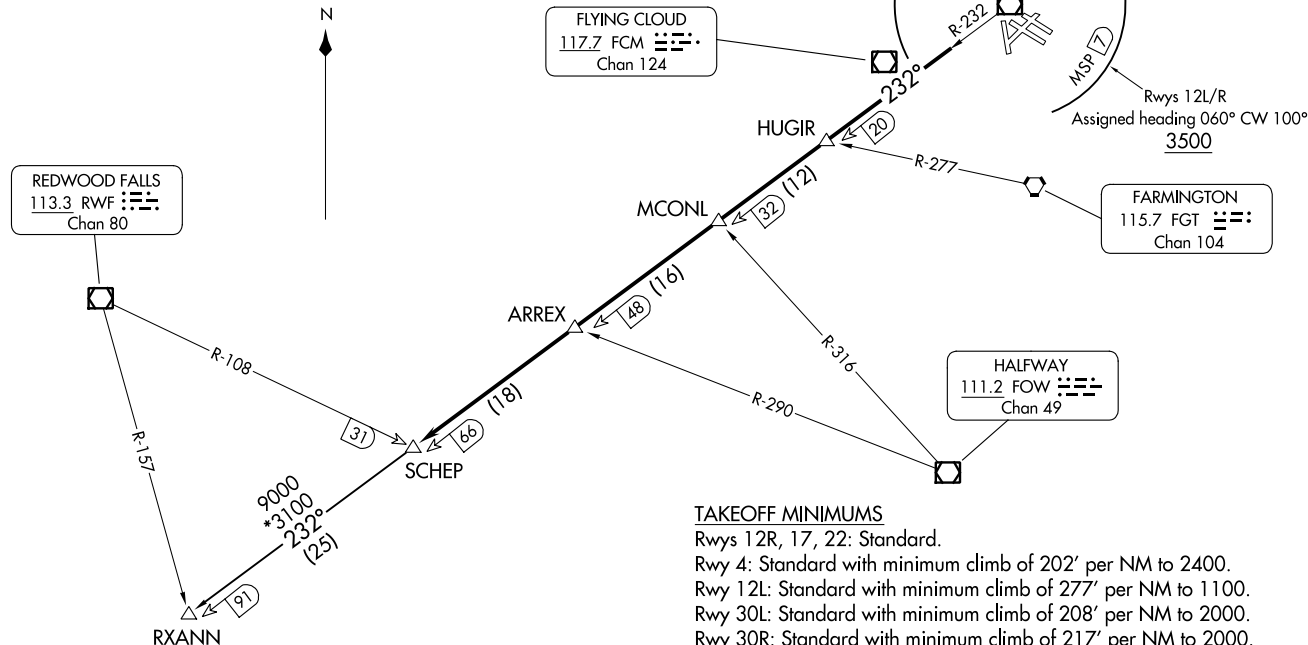
SCHEP ONE DEPARTURE  
(SCHEP1 .SCHEP) 08SEP22

MINNEAPOLIS-ST PAUL INTL/WOLD-CHAMBERLAIN (MSP)  
MINNEAPOLIS, MINNESOTA

MINNEAPOLIS DEP CON  
SOUTH/EAST 124.7 284.7  
NORTH/WEST 125.75 284.7  
D-ATIS DEP  
120.8  
CLNC DEL  
133.2  
CPDLC

**TOP ALTITUDE:  
ASSIGNED BY ATC**

RADAR required.



REDWOOD FALLS  
113.3 RWF  
Chan 80

FLYING CLOUD  
117.7 FCM  
Chan 124

MINNEAPOLIS  
115.3 MSP  
Chan 100

FARMINGTON  
115.7 FGT  
Chan 104

HALFWAY  
111.2 FOW  
Chan 49

**TAKEOFF MINIMUMS**

- Rwys 12R, 17, 22: Standard.
- Rwy 4: Standard with minimum climb of 202' per NM to 2400.
- Rwy 12L: Standard with minimum climb of 277' per NM to 1100.
- Rwy 30L: Standard with minimum climb of 208' per NM to 2000.
- Rwy 30R: Standard with minimum climb of 217' per NM to 2000.
- Rwy 35: Standard with minimum climb of 219' per NM to 2100.

(CONTINUED ON FOLLOWING PAGE)

NOTE: Chart not to scale.

(SCHEP1 .SCHEP) 23334  
SCHEP ONE DEPARTURE

MINNEAPOLIS-ST PAUL INTL/WOLD-CHAMBERLAIN (MSP)  
MINNEAPOLIS, MINNESOTA  
AL-264 (FAA)

# SCHEP ONE DEPARTURE



## DEPARTURE ROUTE DESCRIPTION

TAKEOFF ALL RUNWAYS: Climb on assigned heading for RADAR vectors to assigned fix on MSP R-232, then on depicted route to SCHEP, then on transition. Maintain ATC assigned altitude. Expect filed altitude 10 minutes after departure.

ALL AIRCRAFT: ATC CROSSING RESTRICTIONS AND CLIMB GRADIENTS: If unable to accept crossing restrictions and climb rates, advise ATC prior to taxi.

RUNWAYS 12L/12R: For assigned headings from 060° clockwise to 100°, cross MSP 7 DME Arc at or above 3500, RWY 12L: 540 feet per NM to 3500, RWY 12R: 542 feet per NM to 3500.

RUNWAY 17: For assigned headings from 230° clockwise to 285°, cross MSP 7 DME Arc at or above 3500, 512 feet per NM to 3500.

RUNWAYS 30L/R: For assigned headings from 220° clockwise to 360°, cross MSP 7 DME Arc at or above 3500, 380 feet per NM to 3500.

RXANN TRANSITION (SCHEP1.RXANN): From over SCHEP INT on MSP R-232 to RXANN INT.

NC-1, 03 OCT 2024 to 31 OCT 2024

NC-1, 03 OCT 2024 to 31 OCT 2024