

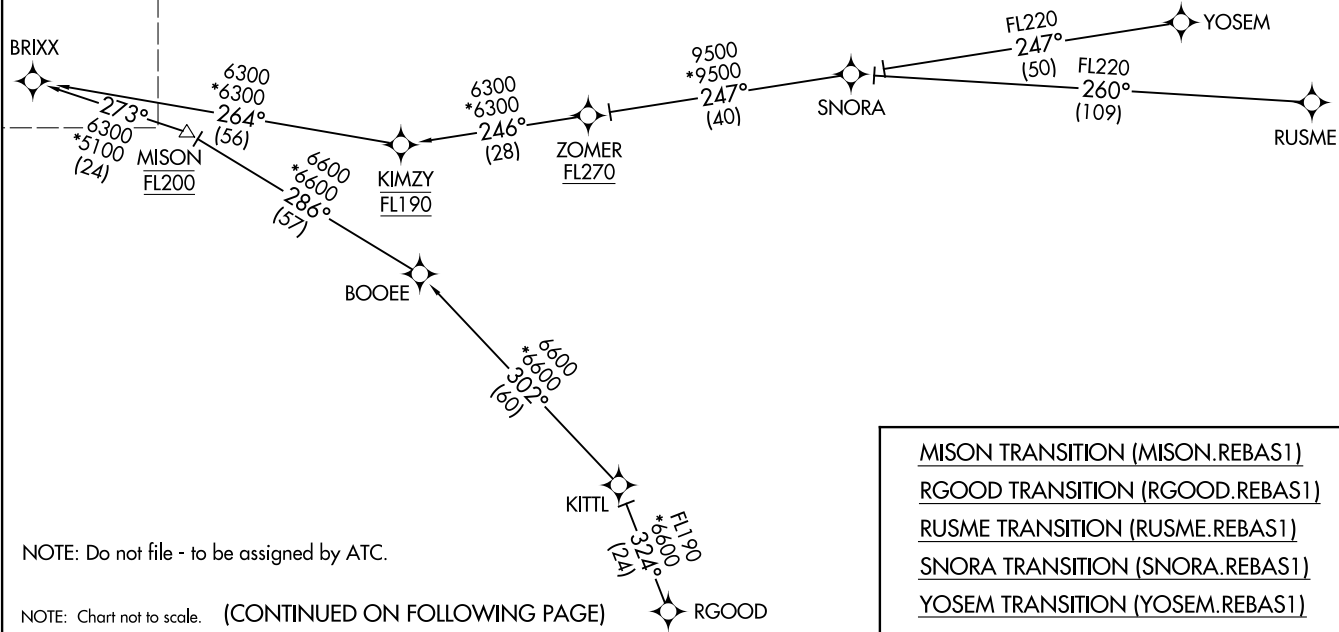
(BRXX.REBAS1) 11 JUL 24

REBAS ONE ARRIVAL (RNAV) Transition Routes

NAPA, CALIFORNIA

RNAV 1 - DME/DME/IRU or GPS.
RADAR required.

See following page for arrival routes.



- OAKLAND CENTER 127.8 353.5
- APC ATIS 124.05
- STS ATIS 120.55
- APC GND CON 121.7
- STS GND CON 121.9
- NAPA TOWER* 118.7 257.8
- SANTA ROSA TOWER* 118.5 363.0

NOTE: Do not file - to be assigned by ATC.

NOTE: Chart not to scale. (CONTINUED ON FOLLOWING PAGE)

- MISON TRANSITION (MISON.REBAS1)
- RGOOD TRANSITION (RGOOD.REBAS1)
- RUSME TRANSITION (RUSME.REBAS1)
- SNORA TRANSITION (SNORA.REBAS1)
- YOSEM TRANSITION (YOSEM.REBAS1)

REBAS ONE ARRIVAL (RNAV) Transition Routes

NAPA, CALIFORNIA

(BRXX.REBAS1) 24193

AL-281 (FAA)

REBAS ONE ARRIVAL (RNAV) Arrival Routes

NAPA, CALIFORNIA

HEALDSBURG MUNI

RNAV 1 - DME/DME/IRU or GPS.

RADAR required.

OAKLAND CENTER
 127.8 353.5
 APC ATIS
 124.05
 STS ATIS
 120.55
 APC GND CON
 121.7
 STS GND CON
 121.9
 NAPA TOWER ★
 118.7 257.8
 SANTA ROSA TOWER ★
 118.5 363.0

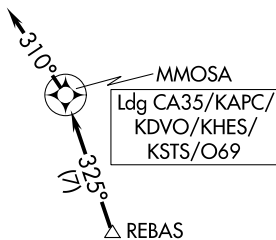
CHARLES M SCHULZ-SONOMA COUNTY

PETALUMA MUNI

NAPA COUNTY

GNOSS FLD

SAN RAFAEL (Pvt)



NOTE: Do not file - to be assigned by ATC.

NOTE: Chart not to scale.

ARRIVAL ROUTE DESCRIPTION

LANDING ALL AIRPORTS: From BRIXX on track 344° to REBAS, then on track 325° to MMOSA, then on track 310°. Expect RADAR vectors to final approach course.

BRIXX

SW-2, 03 OCT 2024 to 31 OCT 2024

SW-2, 03 OCT 2024 to 31 OCT 2024