

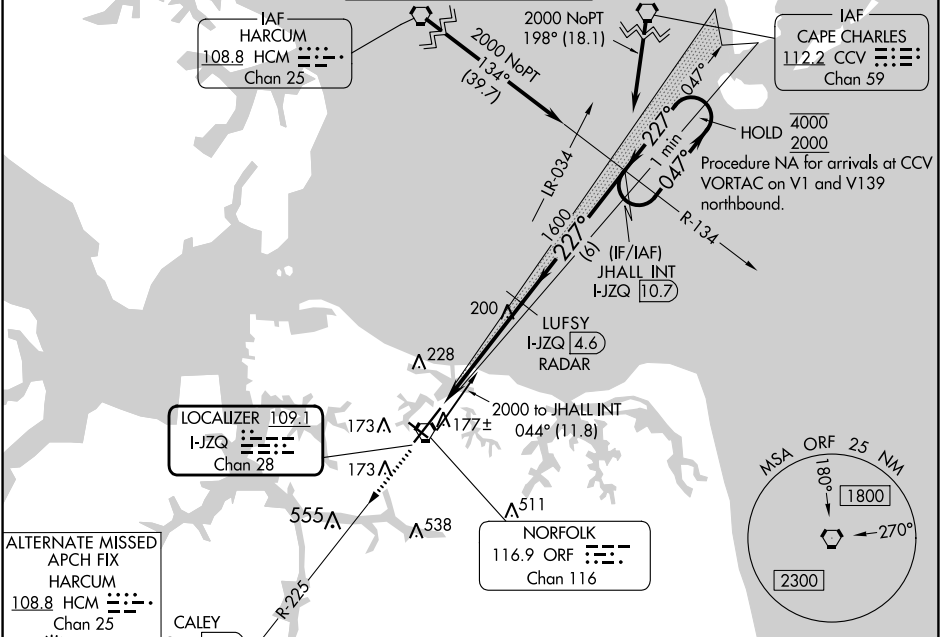
LOC/DME I-JZQ 109.1 Chan 28	APP CRS 227°	Rwy Idg TDZE Apt Elev 8995 26 27
--	------------------------	--

ILS or LOC RWY 23

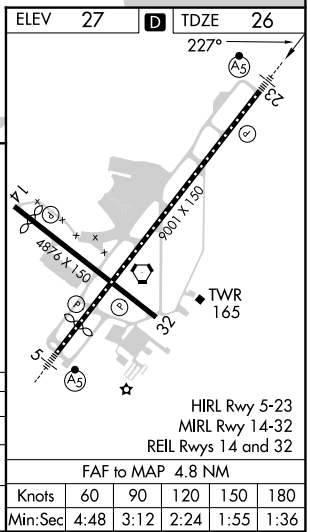
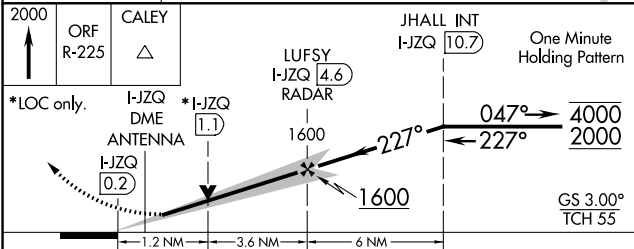
NORFOLK INTL (ORF)

DME or RADAR required.		MALSRR 	MISSED APPROACH: Climb to 2000 on ORF VORTAC R-225 to CALEY/ORF 11.5 DME/RADAR and hold.	
------------------------	--	------------	--	--

ATIS 127.15	NORFOLK APP CON 118.9 353.7	NORFOLK TOWER 120.8 257.8	GND CON 121.9	CLNC DEL 118.5
-----------------------	---------------------------------------	-------------------------------------	-------------------------	--------------------------



ALTERNATE MISSED APCH FIX HARCUM I-JZQ 108.8 HCM Chan 25



CATEGORY	A	B	C	D
S-ILS 23	226-½ 200 (200-½)			
S-LOC 23	460-½ 434 (500-½)	460-¾ 434 (500-¾)		
CIRCLING	480-1 453 (500-1)	540-1 513 (600-1)	540-1½ 513 (600-½)	900-2¾ 873 (900-2¾)

NE-3, 03 OCT 2024 to 31 OCT 2024

NE-3, 03 OCT 2024 to 31 OCT 2024