

OGDEN, UTAH


HI-TACAN Z RWY 14

TACAN HIF Chan 49	APCH CRS 131°	Rwy ldg TDZE Arpt Elev	13,500 4786 4789
-------------------	---------------	------------------------	------------------------

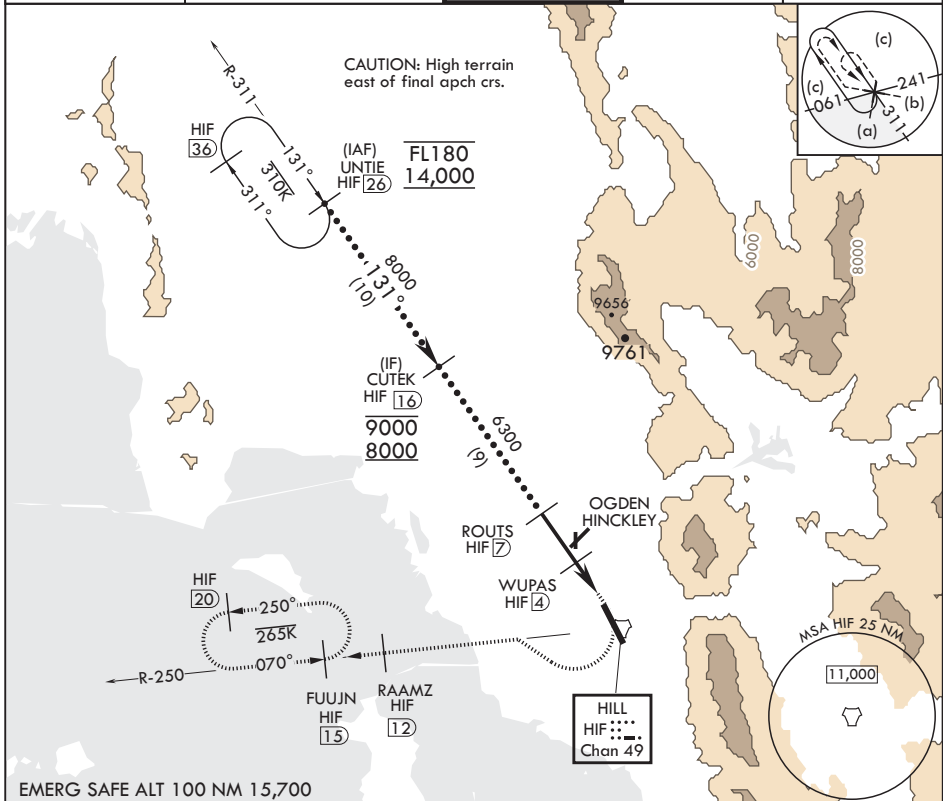
AL-296 (USAF)

HILL AFB (KHIF)

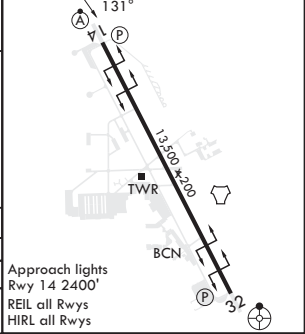
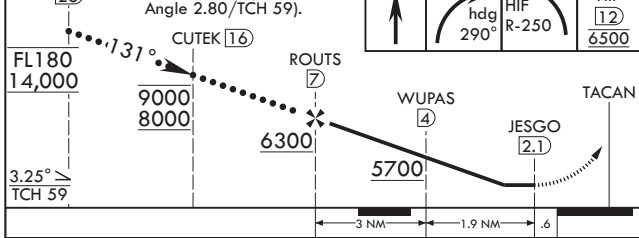
V * When ALS inop, increase CAT CDE RVR to 55, vis to 1 mile.
 ** Circling not authorized in sector NE of Rwy 14-32.

ALSF-2  MISSED APPROACH: Climb to 5300, then turn right heading 290°, remain within HIF TACAN 5.7 DME until established on 290° heading. Intercept the HIF R-250 outbound. Cross RAAMZ at 6500, then climb and maintain 7200 direct to FUJUN and hold.

ATIS 134.925 397.9	SALT LAKE CITY APP CON 121.1 319.25	TOWER 127.15 263.15	GND CON 121.6 275.8	CLNC DEL 124.1 335.8
--------------------	-------------------------------------	---------------------	---------------------	----------------------



EMERG SAFE ALT 100 NM 15,700	UNTIE (HIF 26)	VGSI and descent angle not coincident (VGSI Angle 2.80/TCH 59).	5300	6500	RAAMZ HIF 12 6500	ELEV 4789	TDZE 4786
------------------------------	----------------	---	------	------	-------------------	-----------	-----------



CATEGORY	C	D	E
S-14*	5160/40	374	(400-3/4)
C CIRCLING**	5340-2 551	(600-2)	5900-3 1111 (1200-3)

Approach lights Rwy 14 2400'
 REIL all Rwys
 HIRL all Rwys

OGDEN, UTAH

41°07'N - 111°58'W

HILL AFB (KHIF)

Amdt 9 05OCT23

HI-TACAN Z RWY 14

SW-4, 03 OCT 2024 to 31 OCT 2024

SW-4, 03 OCT 2024 to 31 OCT 2024