

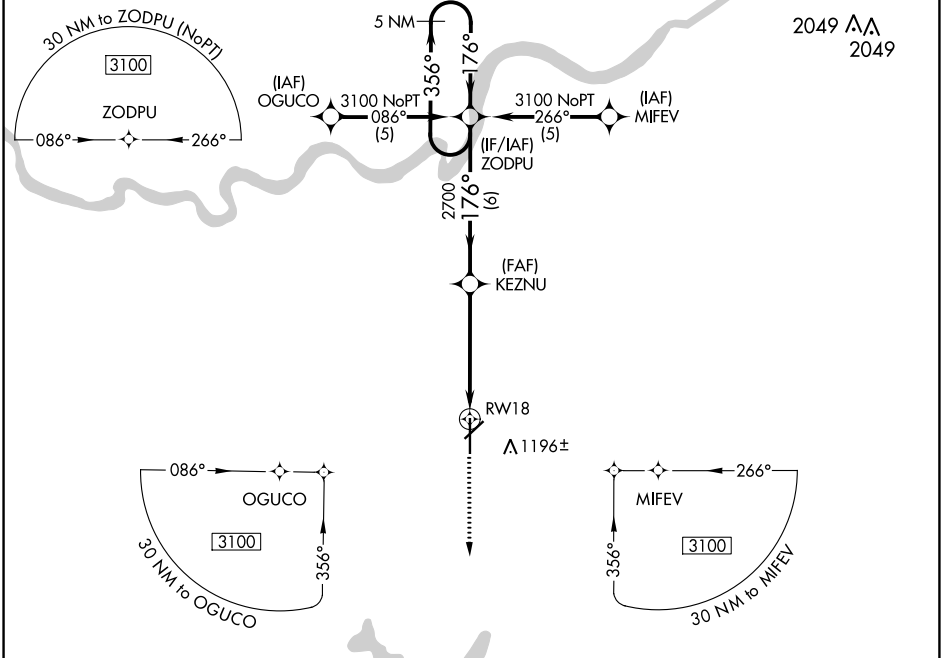
APP CRS <b>176°</b>	Rwy ldg TDZE Apt Elev	<b>7339</b> <b>1085</b> <b>1087</b>
------------------------	-----------------------------	---

# RNAV (GPS) RWY 18

## NEW CENTURY AIRCENTER (IXD)

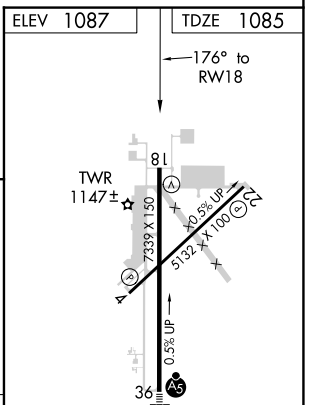
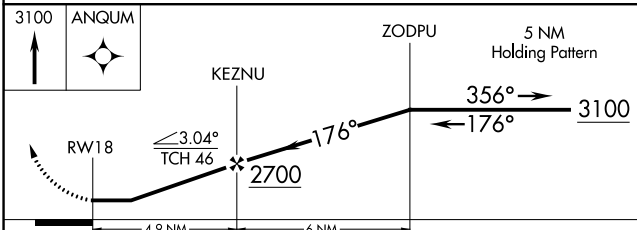
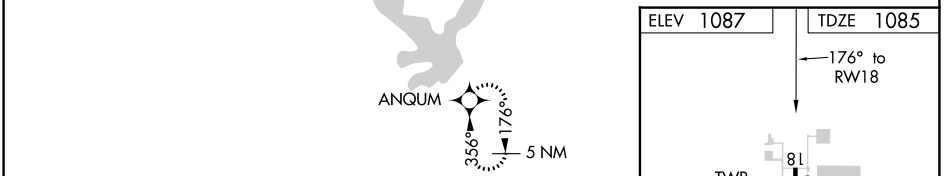
**▽** DME/DME RNP-0.3 NA. If local altimeter setting not received, use Johnson County Exec altimeter setting and increase all MDAs 20 feet. **▲** MISSED APPROACH: Climb to 3100 direct ANQUM and hold.

ASOS <b>135.325</b>	KANSAS CITY APP CON <b>118.9 251.075</b>	NEW CENTURY TOWER * <b>133.0 (CTAF) 0</b>	GND CON <b>124.3</b>	UNICOM <b>122.95</b>
------------------------	---	--	-------------------------	-------------------------



NC-2, 03 OCT 2024 to 31 OCT 2024

NC-2, 03 OCT 2024 to 31 OCT 2024



CATEGORY	A	B	C	D
LNVA MDA	1500-1	415 (500-1)	1500-1¼	415 (500-1¼)
<b>C</b> CIRCLING	1560-1	473 (500-1)	1580-1½	1640-2
			493 (500-1½)	553 (600-2)

