

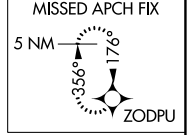
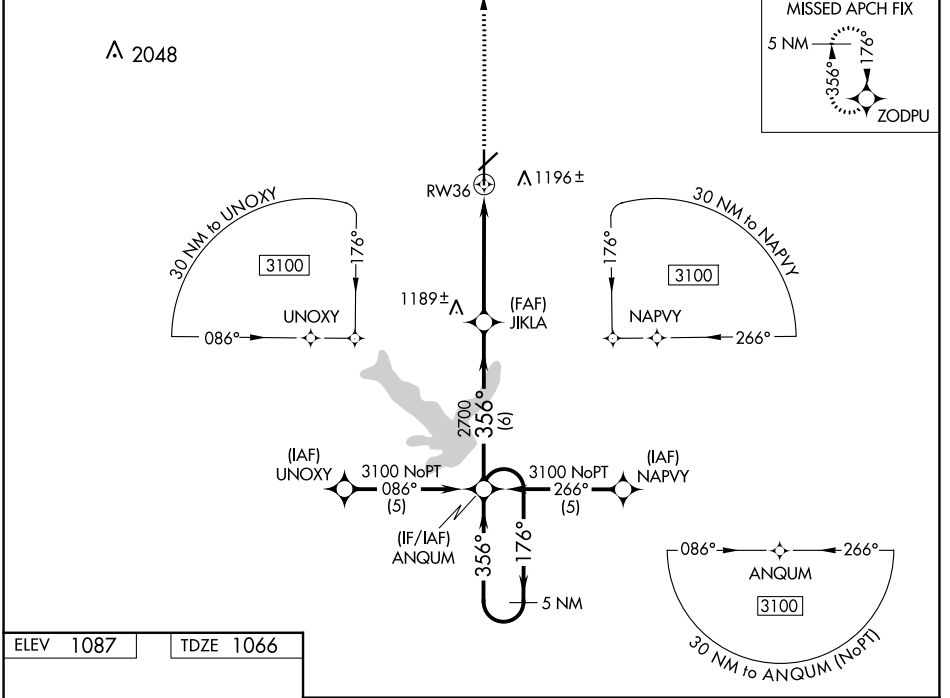
WAAS CH <b>81807</b> <b>W36A</b>	APP CRS <b>356°</b>	Rwy Idg <b>7339</b> TDZE <b>1066</b> Apt Elev <b>1087</b>
--	------------------------	---

# RNAV (GPS) RWY 36

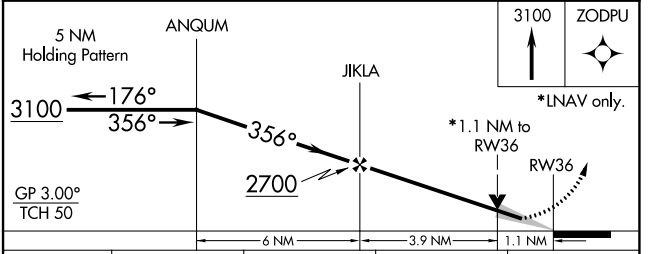
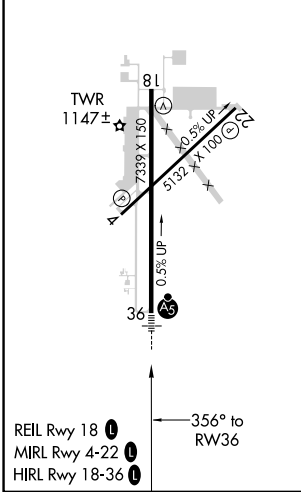
NEW CENTURY AIRCENTER (IXD)

<p><b>⚠</b> DME/DME RNP-0.3 NA. For inop MALSRL, increase LNAV Cat D visibility to 1½ and LPV visibility to 1 all Cats. If local altimeter setting not received, use Johnson County Exec altimeter setting and increase all DA/MDAs 20 feet. VDP NA with Johnson County Exec altimeter setting.</p>	<p>MALSRL</p>	<p>MISSED APPROACH: Climb to 3100 direct ZODPU and hold.</p>
	<p><b>⚠</b></p>	

ASOS <b>135.325</b>	KANSAS CITY APP CON <b>118.9 251.075</b>	NEW CENTURY TOWER * <b>133.0 (CTAF) 0</b>	GND CON <b>124.3</b>	UNICOM <b>122.95</b>
------------------------	---	--	-------------------------	-------------------------



ELEV 1087	TDZE 1066
-----------	-----------



CATEGORY	A	B	C	D
LPV DA	1316-½ 250 (300-½)			
LNAV/VNAV DA	NA			
LNAV MDA	1440-½ 374 (400-½)		1440-1 374 (400-1)	
<b>C</b> CIRCLING	1560-1 473 (500-1)		1580-1½ 493 (500-1½)	
			1640-2 553 (600-2)	

NC-2, 03 OCT 2024 to 31 OCT 2024

NC-2, 03 OCT 2024 to 31 OCT 2024