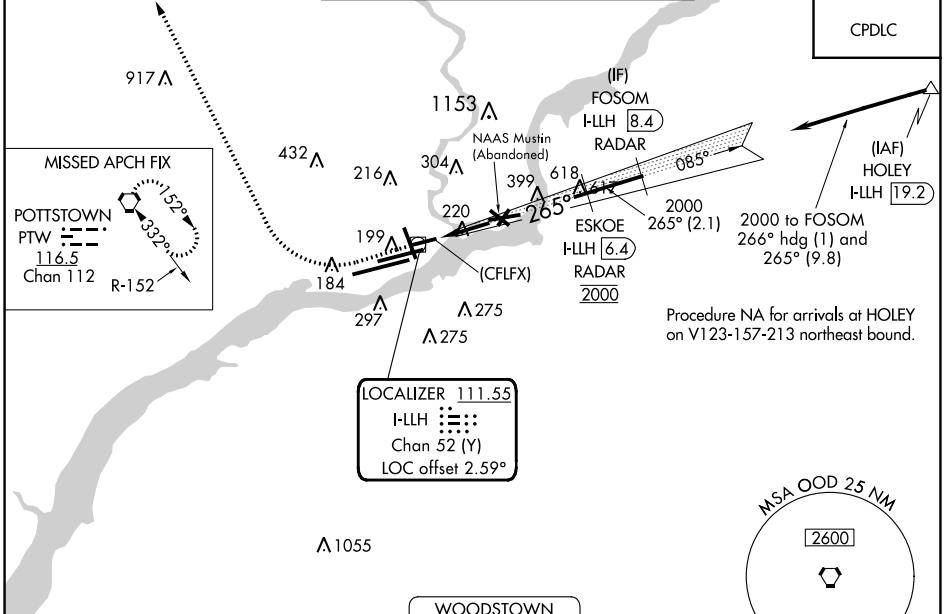


LOC/DME I-LLH <b>111.55</b> Chan <b>52 (Y)</b>	APP CRS <b>265°</b>	Rwy Idg TDZE <b>36</b> Apt Elev <b>36</b>	<b>5001</b>
--	------------------------	---	-------------

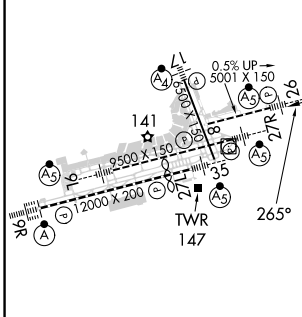
# ILS or LOC RWY 26

PHILADELPHIA INTL (PHL)

DME or RADAR required.		MALSR	MALSR APPROACH: Climb to 800 then climbing right turn to 3000 direct PTW VORTAC and hold.	
<p><b>▽</b> For inop ALS, increase S-ILS all Cats visibility to RVR 4500 and S-LOC Cats A and B visibility to RVR 5500 and Cat C to 1 1/8 SM. <b>▲</b> Rwy 26 helicopter visibility reduction below RVR 4000 NA.</p>				
D-ATIS ARR <b>133.4</b> DEP <b>135.925</b>	PHILADELPHIA APP CON <b>124.35 319.15</b>	PHILADELPHIA TOWER <b>118.5 327.05</b> (Rwys 9L/27R, 8/26 and 17/35) <b>135.1 327.05</b> (Rwy 9R/27L)	GND CON <b>121.9 348.6</b>	CLNC DEL <b>118.85 348.6</b>



ELEV 36	<b>D</b>	TDZE 36
---------	----------	---------



TDZ/CL Rwy 9R					
HIRL all Rwys					
REIL Rwys 9L and 35					
FAF to MAP 5.7 NM					
Knots	60	90	120	150	180
Min:Sec	5:42	3:48	2:51	2:17	1:54

CATEGORY	A	B	C	D
S-ILS 26	299/40 263 (300-3/4)			NA
S-LOC 26	700/40	664 (700-3/4)	700-1 1/2 664 (700-1 1/2)	NA
<b>C</b> CIRCLING	700-1	664 (700-1)	700-1 7/8 664 (700-1 7/8)	NA

NE-4, 03 OCT 2024 to 31 OCT 2024

NE-4, 03 OCT 2024 to 31 OCT 2024