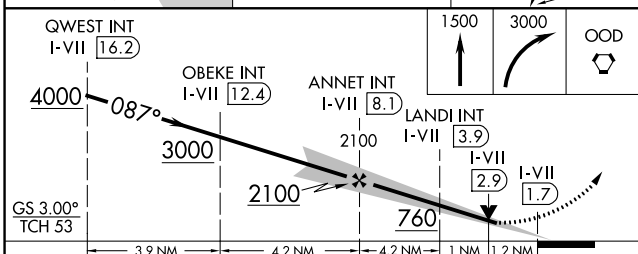
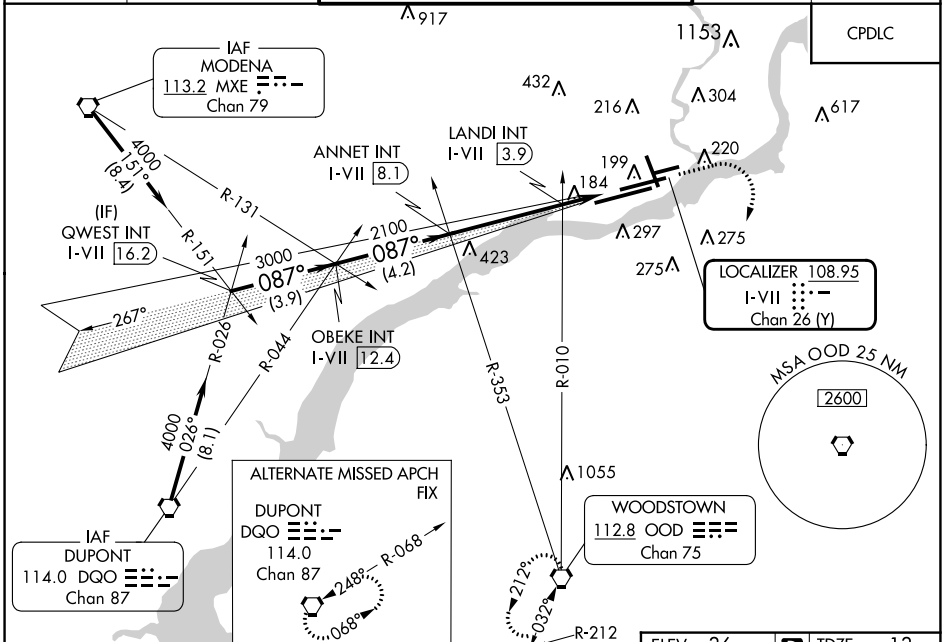


LOC/DME I-VII <b>108.95</b> Chan 26 (Y)	APP CRS <b>087°</b>	Rwy Idg TDZE Apt Elev <b>9500</b> <b>13</b> <b>36</b>
---	------------------------	--

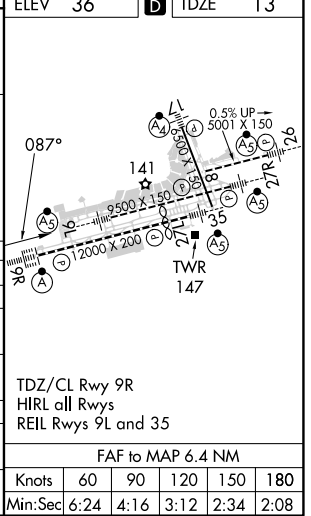
# ILS or LOC RWY 9L

PHILADELPHIA INTL (PHL)

<p>▼ For inop ALS, increase S-LOC 9L Cat C/D visibility to 2 SM. ▲ * RVR 1800 authorized with use of FD or AP or HUD to DA.</p>	<p>MALSR</p>	<p>MISSED APPROACH: Climb to 1500 then climbing right turn to 3000 direct OOD VORTAC and hold.</p>		
<p>D-ATIS ARR <b>133.4</b> DEP <b>135.925</b></p>	<p>PHILADELPHIA APP CON <b>124.35 319.15</b></p>	<p>PHILADELPHIA TOWER <b>118.5 327.05</b> (Rwys 9L/27R, 8/26 and 17/35) <b>135.1 327.05</b> (Rwy 9R/27L)</p>	<p>GND CON <b>121.9 348.6</b></p>	<p>CLNC DEL <b>118.85 348.6</b></p>



CATEGORY	A	B	C	D
S-ILS 9L*	213/24 200 (200-½)			
S-LOC 9L	760/24 747 (800-½)	760/40 747 (800-¾)	760-1¾ 747 (800-1¾)	747 (800-1¾)
CIRCLING	760-1 724 (800-1)	760-1¼ 724 (800-1¼)	760-2 724 (800-2)	760-2¼ 724 (800-2¼)
LANDI FIX MINIMUMS (DUAL VOR RECEIVERS OR DME REQUIRED)				
S-LOC 9L	440/24 504 (600-1)	427 (500-½) 564 (600-1)	440/40 584 (600-1½)	427 (500-¾) 684 (700-2¼)
CIRCLING	540-1 504 (600-1)	600-1 564 (600-1)	620-1½ 584 (600-1½)	720-2¼ 684 (700-2¼)



NE-4, 03 OCT 2024 to 31 OCT 2024

NE-4, 03 OCT 2024 to 31 OCT 2024