

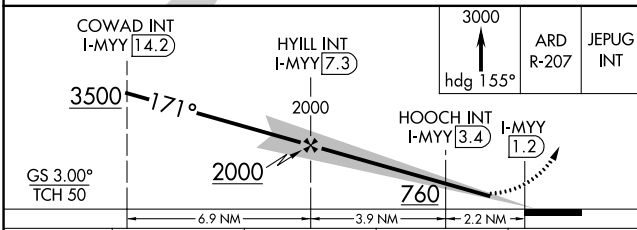
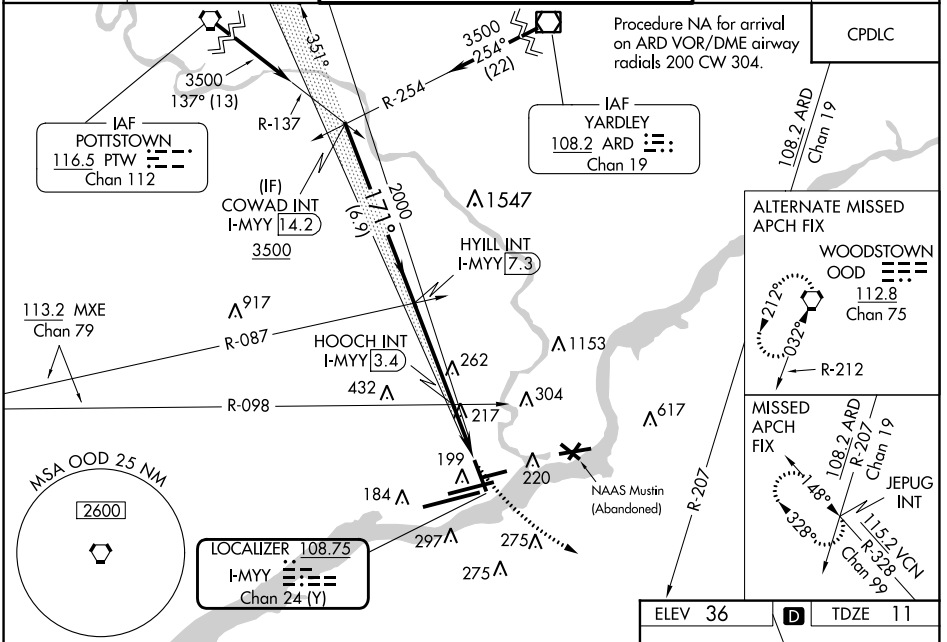
LOC/DME I-MYY 108.75 Chan 24 (Y)	APP CRS 171°	Rwy Idg 6500 TDZE 11 Apt Elev 36
-----------------------------------------------	------------------------	-------------------------------------------------------------

ILS Z or LOC RWY 17

PHILADELPHIA INTL (PHL)

<p>▽ ▲</p> <p>Inop table does not apply to S-ILS 17 all Cats and S-LOC 17 Cat A. For inop ALS, increase S-LOC 17 Cat C visibility to 2 SM. HOOCH fix minimums: inop table does not apply to Cats A/B. Rwy 17 helicopter visibility reduction below RVR 5000 NA.</p>	MALSF	MISSED APPROACH: Climb to 3000 on heading 155° and ARD VOR/DME R-207 to JEPUG INT and hold.

D-ATIS ARR 133.4 DEP 135.925	PHILADELPHIA APP CON 124.35 319.15	PHILADELPHIA TOWER 118.5 327.05 (Rwys 9L/27R, 8/26 and 17/35) 135.1 327.05 (Rwy 9R/27L)	GND CON 121.9 348.6	CLNC DEL 118.85 348.6
--------------------------------------------------	----------------------------------------------	-------------------------------------------------------------------------------------------------------------	-------------------------------	---------------------------------



ELEV 36	D	TDZE 11
---------	----------	---------

171°

0.5% UP

5001 X 150

141

2500 X 150

12000 X 200

TWR 147

AS 1, AS 2, AS 3, AS 4, AS 5

35

27

21

15

9

3

0

12000 X 200

CATEGORY	A	B	C	D
S-ILS 17	260/50 249 (300-1)			
S-LOC 17	760/50 749 (800-1)	760/55 749 (800-1)	760-1 7/8 749 (800-1 7/8)	760-2 1/4 749 (800-2 1/4)
CIRCLING	760-1 724 (800-1)	760-1 1/4 724 (800-1 1/4)	760-2 724 (800-2)	760-2 1/4 724 (800-2 1/4)
HOOCH FIX MINIMUMS				
S-LOC 17	480/50 469 (500-1)		480/60 469 (500-1 1/4)	
CIRCLING	540-1 504 (600-1)	600-1 564 (600-1)	620-1 1/2 584 (600-1 1/2)	720-2 1/4 684 (700-2 1/4)

NE-4, 03 OCT 2024 to 31 OCT 2024

NE-4, 03 OCT 2024 to 31 OCT 2024