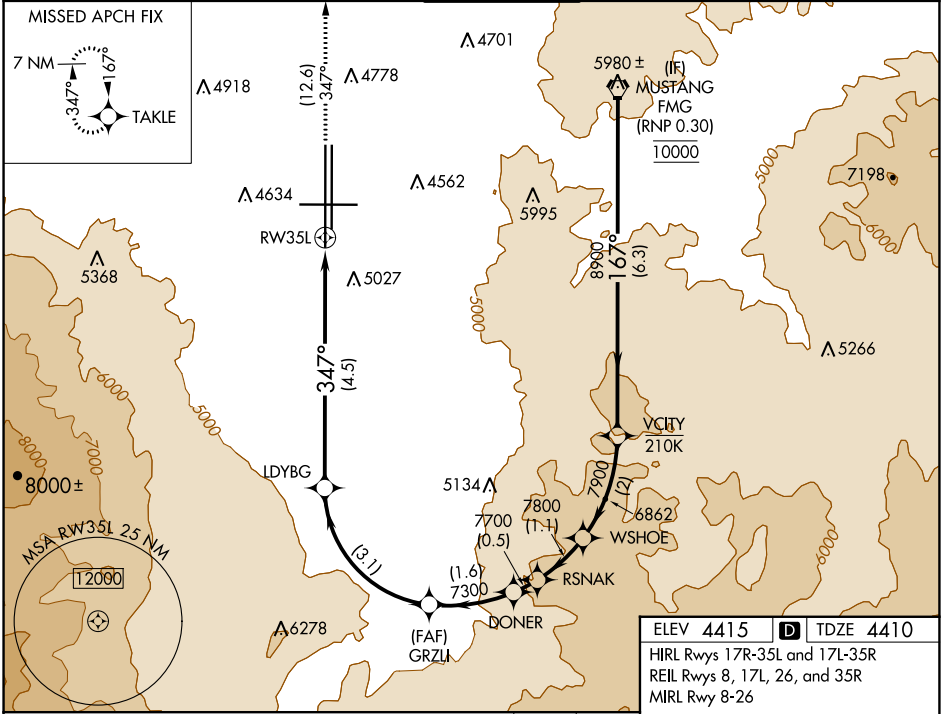


RNAV (RNP) W RWY 35L

RENO/TAHOE INTL (RNO)

APP CRS 347°	Rwy Idg 10011
	TDZE 4410
	Apt Elev 4415

RNP AR APCH - GPS.		MALS/R	MISSED APPROACH: Climb to 11000 on track 347° to TAKLE and hold, continue climb-in-hold to 11000. *Missed approach requires minimum climb of 300 feet per NM to 7140.						
For uncompensated Baro-VNAV systems, procedure NA below -9°C or above 35°C.			D-ATIS	NORCAL APP CON		RENO TOWER	GND CON	CLNC DEL	CPDLC
-13°C			135.8 363.0	119.2 279.55	126.3 353.9	118.7 257.8	121.9 348.6	124.9 370.85	



SW-4, 03 OCT 2024 to 31 OCT 2024

SW-4, 03 OCT 2024 to 31 OCT 2024

ELEV 4415	D TDZE 4410
HIRL Rwy 17R-35L and 17L-35R	
REIL Rwy 8, 17L, 26, and 35R	
MIRL Rwy 8-26	

FMG VORTAC	VCITY	WSHOE	RSNAK	DONER	GRZLI	LDYBG	RW35L
10000	7900	7800	7700	7300	6155		
GP 3.50°							
TCH 72							
	6.3 NM	2 NM	1.1 NM	0.5 NM	1.6 NM	3.1 NM	4.5 NM
CATEGORY	A		B		C		D
RNP 0.10 DA*			4736-1/2		326 (400-1/2)		
RNP 0.30 DA			5349-2		939 (1000-2)		
AUTHORIZATION REQUIRED							

