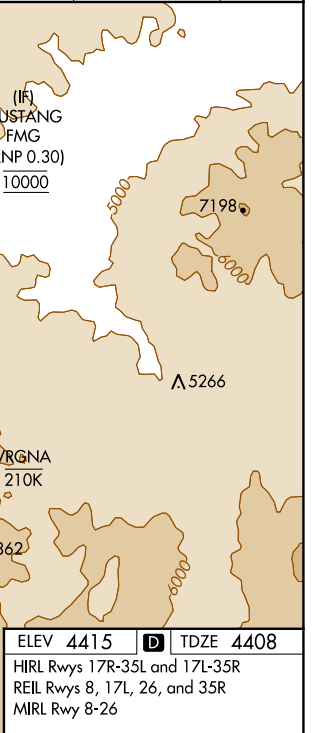
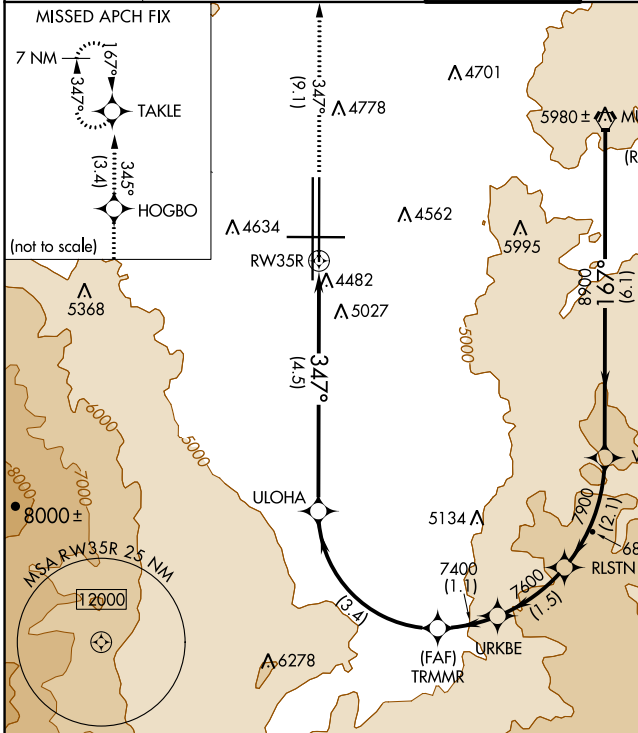


RNAV (RNP) W RWY 35R

RENO/TAHOE INTL (RNO)

APP CRS 347°	Rwy Idg TDZE Apt Elev	9000 4408 4415
------------------------	-----------------------------	-------------------------------------------

RNP AR APCH - GPS.		MISSED APPROACH: Climb to 11000 on track 347° to HOGBO and on track 345° to TAKLE and hold, continue climb-in-hold to 11000. *Missed approach requires minimum climb of 301 feet per NM to 7150.					
<p>For uncompensated Baro-VNAV systems, procedure NA below -9°C or above 34°C. -13°C</p>		D-ATIS 135.8 363.0	NORCAL APP CON 119.2 279.55 126.3 353.9	RENO TOWER 118.7 257.8	GND CON 121.9 348.6	CLNC DEL 124.9 370.85	CPDLC



ELEV 4415	D TDZE 4408
HIRL Rwys 17R-35L and 17L-35R	
REIL Rwys 8, 17L, 26, and 35R	
MIRL Rwy 8-26	

FMG VORTAC	VRGNA	RLSTN	URKBE	11000	HOGBO	TAKLE
10000				↑	tr 347°	tr 345°
GP 3.50°				TRMMR	ULOHA	RW35R
TCH 75				7400	6156	
	6.1 NM	2.1 NM	1.5 NM	1.1 NM	3.4 NM	4.5 NM
CATEGORY	A	B	C	D		
RNP 0.11 DA*	4762-1 354 (400-1)					
RNP 0.30 DA	5349-2½ 941 (1000-2½)					

AUTHORIZATION REQUIRED

SW-4, 03 OCT 2024 to 31 OCT 2024

SW-4, 03 OCT 2024 to 31 OCT 2024