

RNAV (RNP) Y RWY 17R

RENO/TAHOE INTL (RNO)

APP CRS	Rwy Idg	10001
167°	TDZE	4415
	Apt Elev	4415

RNP AR APCH - GPS.

⚠ For uncompensated Baro-VNAV systems, procedure NA below -9°C or above 54°C. For inop ALS, increase RNP 0.1 DA all Cats visibility to RVR 5500, increase RNP 0.2 DA all Cats visibility to 1% SM, increase RNP 0.3 DA all Cats visibility to 1% SM.

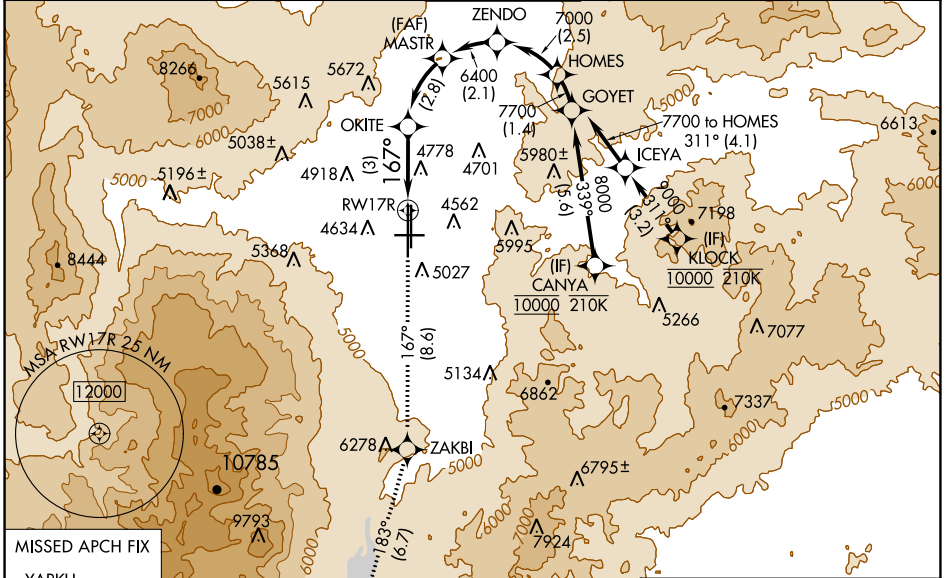
MALSR

MISSED APPROACH: Climb to 13000 on track 167° to ZAKBI and on track 183° to USINE and on track 127° to YARKU and hold, continue climb-in-hold to 13000.

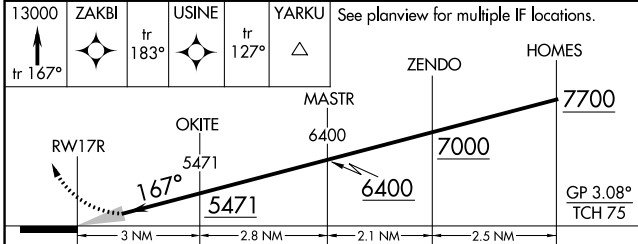
#MISSED approach requires minimum climb of 222 feet per NM to 7220.

*MISSED approach requires minimum climb of 266 feet per NM to 7240.

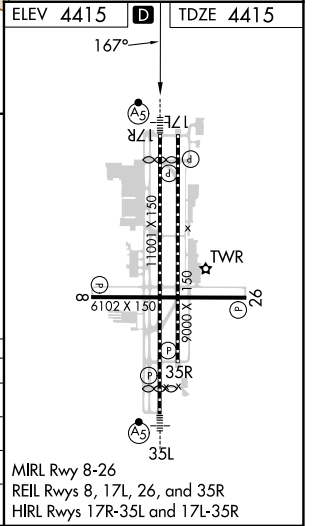
D-ATIS	NORCAL APP CON	RENO TOWER	GND CON	CLNC DEL	CPDLC
135.8 363.0	119.2 279.55 126.3 353.9	118.7 257.8	121.9 348.6	124.9 370.85	



ELEV 4415	TDZE 4415
-----------	-----------



CATEGORY	A	B	C	D
RNP 0.10 DA*		4759/30	344 (400- $\frac{3}{4}$)	
RNP 0.20 DA#		4985-1 $\frac{1}{4}$	570 (600-1 $\frac{1}{4}$)	
RNP 0.30 DA		5091-1 $\frac{1}{2}$	676 (700-1 $\frac{1}{2}$)	



AUTHORIZATION REQUIRED

SW-4, 03 OCT 2024 to 31 OCT 2024

SW-4, 03 OCT 2024 to 31 OCT 2024