

WAAS CH 72909 W17A	APP CRS 167°	Rwy Idg 9000 TDZE 4415 Apt Elev 4415
--	------------------------	--

RNAV (GPS) X RWY 17L

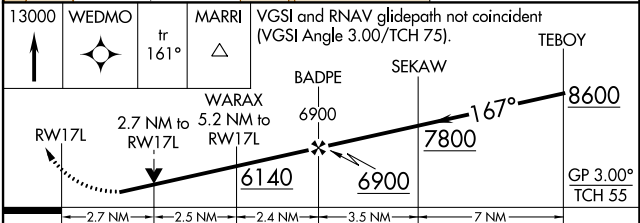
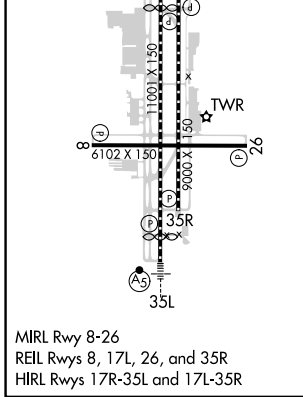
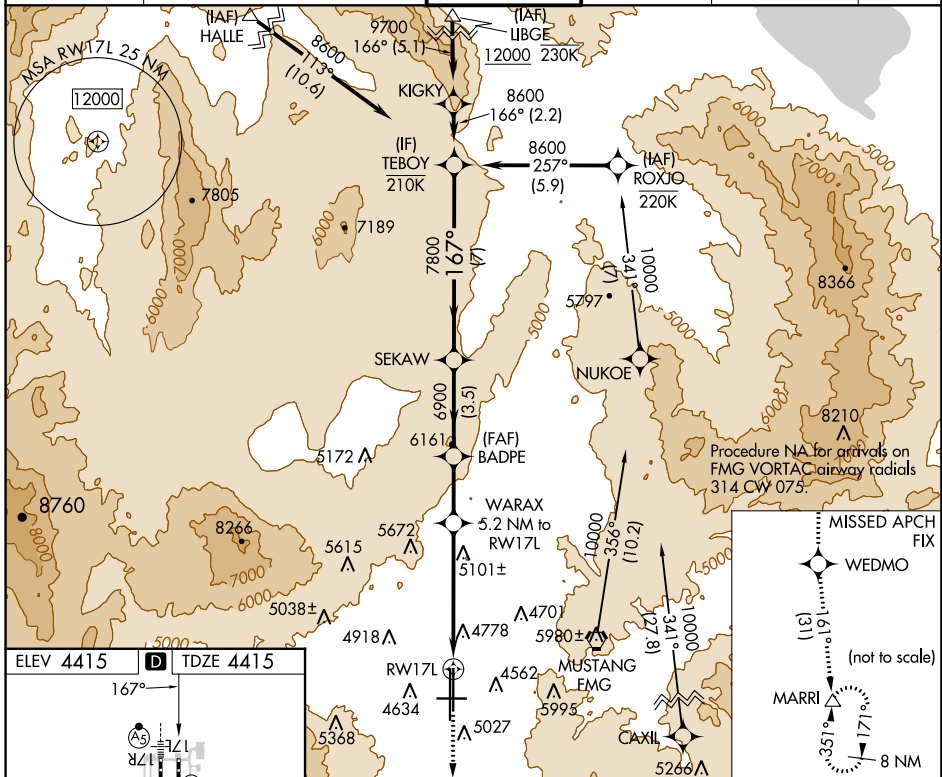
RENO/TAHOE INTL (RNO)

RNP APCH - GPS.

⚠ Circling Rwy 8 NA at night. Rwy 17L helicopter visibility reduction below ¼ SM NA. For uncompensated Baro-VNAV systems, LNAV/VNAV NA below -9°C or above 54°C.

⚠ MISSED APPROACH: Climb to 13000 direct WEDMO and on track 161° to MARRI and hold.

D-ATIS 135.8 363.0	NORCAL APP CON 119.2 279.55 126.3 353.9	RENO TOWER 118.7 257.8	GND CON 121.9 348.6	CLNC DEL 124.9 370.85	CPDLC
------------------------------	---	----------------------------------	-------------------------------	---------------------------------	-------



CATEGORY	A	B	C	D
LPV DA	5109-2 694 (700-2)			
LNAV/VNAV DA	5094-1 679 (700-1)			
LNAV MDA	5360-1 945 (1000-1)	5360-2 945 (1000-2)		
C CIRCLING	5360-1 945 (1000-1)	5360-1 945 (1000-1)	6460-3 2045 (2100-3)	

RENO, NEVADA
Amdt 3 03NOV22

39°30'N-119°46'W

RNAV (GPS) X RWY 17L

SW-4, 03 OCT 2024 to 31 OCT 2024

SW-4, 03 OCT 2024 to 31 OCT 2024