

# RNAV (GPS) X RWY 35R

RENO/TAHOE INTL (RNO)

APP CRS <b>347°</b>	Rwy Idg TDZE Apt Elev	<b>9000</b> <b>4408</b> <b>4415</b>
------------------------	-----------------------------	---

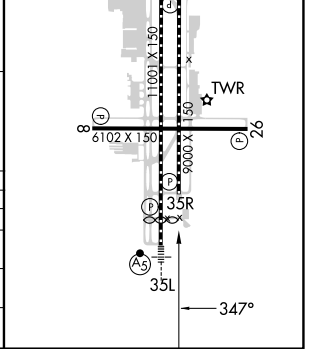
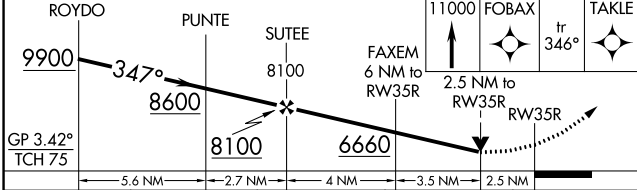
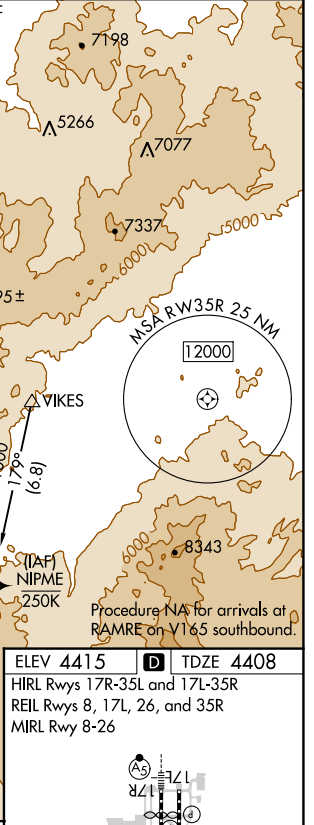
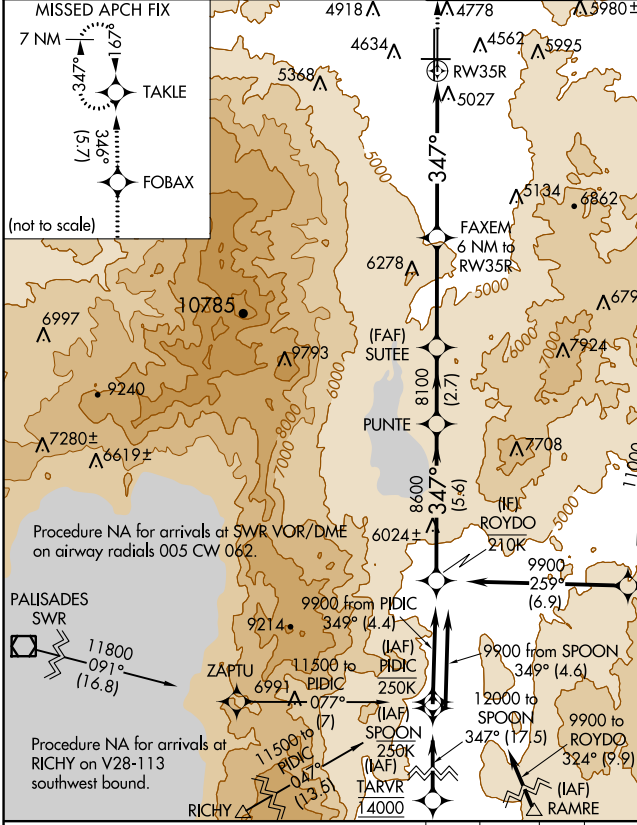
RNP APCH - GPS.

**⚠** Circling Rwy 8 NA at night. Rwy 35R helicopter visibility reduction below ¾ SM NA.

**⚠** -13°C Baro-VNAV NA.

MISSED APPROACH: Climb to 11000 direct FOBAX and on track 346° to TAKLE and hold, continue climb-in-hold to 11000.  
\*Missed approach requires minimum climb of 250 feet per NM to 5600.

D-ATIS <b>135.8 363.0</b>	NORCAL APP CON <b>119.2 279.55 126.3 353.9</b>	RENO TOWER <b>118.7 257.8</b>	GND CON <b>121.9 348.6</b>	CLNC DEL <b>124.9 370.85</b>	CPDLC
------------------------------	---	----------------------------------	-------------------------------	---------------------------------	-------



CATEGORY	A				B				C				D			
LNAV/VNAV DA	5471-4								1063 (1100-4)							
LNAV MDA*	5380-1¼ 972 (1000-1¼)				5380-1½ 972 (1000-1½)				5380-3				972 (1000-3)			
LNAV MDA	5500-1¼ 1092 (1100-1¼)				5500-1½ 1092 (1100-1½)				5500-3				1092 (1100-3)			
<b>C</b> CIRCLING	5500-1¼ 1085 (1100-1¼)				5500-1½ 1085 (1100-1½)				6460-3				2045 (2100-3)			

SW-4, 03 OCT 2024 to 31 OCT 2024

SW-4, 03 OCT 2024 to 31 OCT 2024