

WAAS CH 40409 W35B	APP CRS 347°	Rwy Idg TDZE Apt Elev	9000 4408 4415
--	------------------------	-----------------------------	---

RNAV (GPS) Y RWY 35R

RENO/TAHOE INTL (RNO)

RNP APCH - GPS.

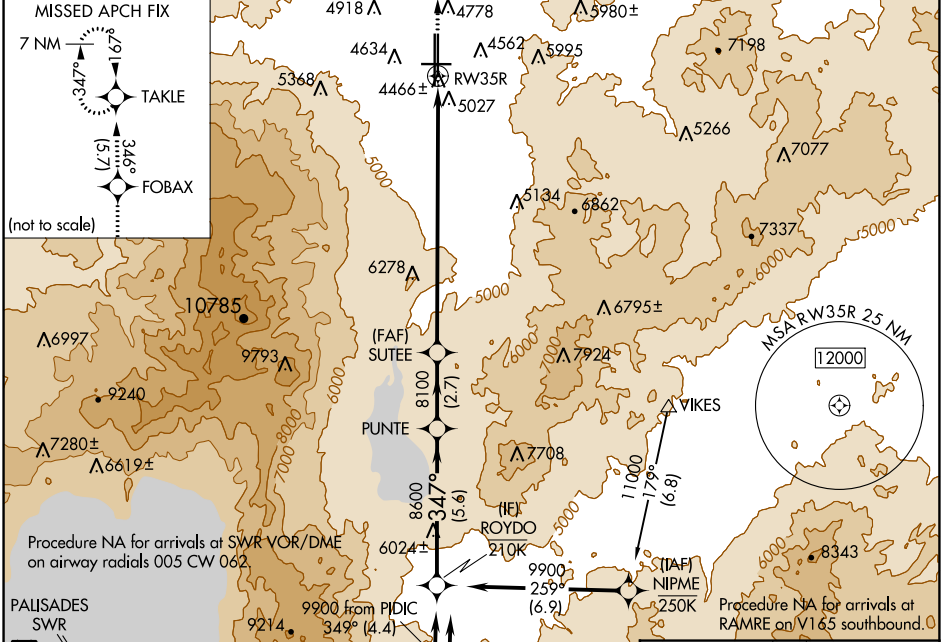
NA Rwy 35R helicopter visibility reduction below 3/4 SM NA.

-13°C

MISSED APPROACH: Climb to 11000 direct FOBAX and on track 346° to TAKLE and hold, continue climb-in-hold to 11000.

*Missed approach requires minimum climb of 250 feet per NM to 6100.

D-ATIS	NORCAL APP CON	RENO TOWER	GND CON	CLNC DEL	CPDLC
135.8 363.0	119.2 279.55 126.3 353.9	118.7 257.8	121.9 348.6	124.9 370.85	

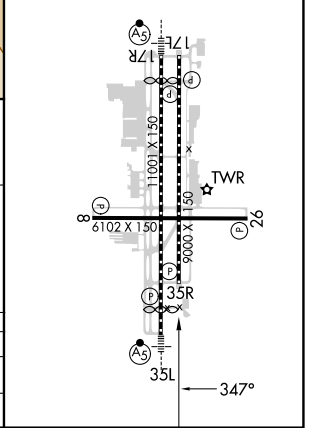
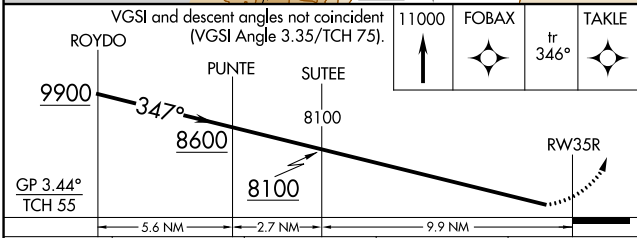


Procedure NA for arrivals at SWR VOR/DME on airway radials 005 CW 062.

Procedure NA for arrivals at RICHY on V28-113 southwest bound.

Procedure NA for arrivals at RAMRE on V165 southbound.

ELEV 4415	D TDZE 4408
HIRL Rwy 17R-35L and 17L-35R	
REIL Rwy 8, 17L, 26, and 35R	
MIRL Rwy 8-26	



CATEGORY	A	B	C	D
LPV DA*		4780-1	372 (400-1)	
LPV DA		5379-3	971 (1000-3)	

SW-4, 03 OCT 2024 to 31 OCT 2024

SW-4, 03 OCT 2024 to 31 OCT 2024