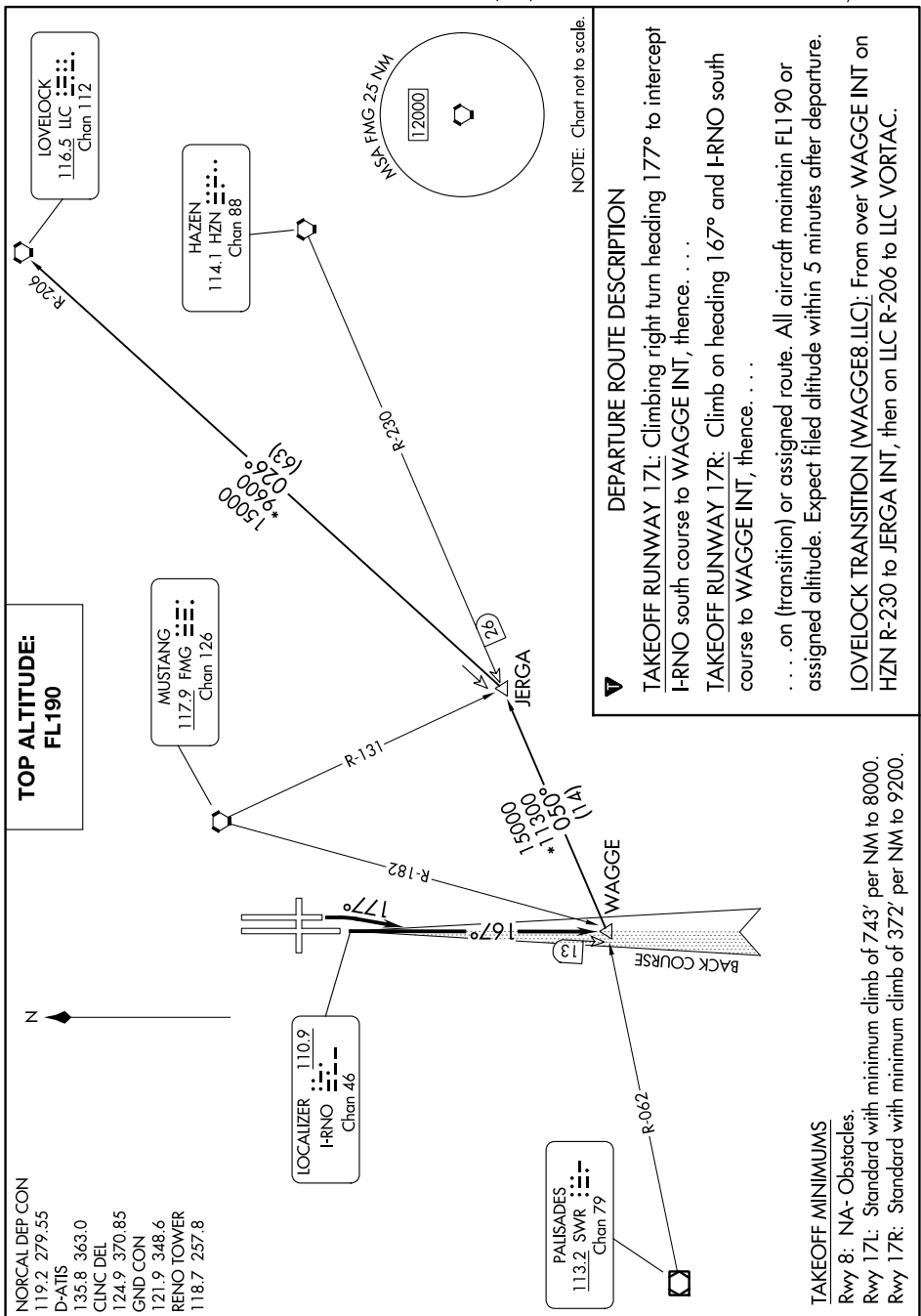


WAGGE EIGHT DEPARTURE

AL-346 (FAA)

RENO/TAHOE INTL (RNO)
RENO, NEVADA

SW-4, 03 OCT 2024 to 31 OCT 2024



NORCAL DEP CON
119.2 279.55
D-ATIS
135.8 363.0
CLNC DEL
124.9 370.85
GND CON
121.9 348.6
RENO TOWER
118.7 257.8

**TOP ALTITUDE:
FL190**

DEPARTURE ROUTE DESCRIPTION

- TAKEOFF RUNWAY 17L: Climbing right turn heading 177° to intercept I-RNO south course to WAGGE INT, thence. . . .
- TAKEOFF RUNWAY 17R: Climb on heading 167° and I-RNO south course to WAGGE INT, thence. . . .
- on (transition) or assigned route. All aircraft maintain FL190 or assigned altitude. Expect filed altitude within 5 minutes after departure.
- LOVELOCK TRANSITION (WAGGE8.ILC): From over WAGGE INT on HZN R-230 to JERGA INT, then on LLC R-206 to LLC VORTAC.

NOTE: Chart not to scale.

TAKEOFF MINIMUMS

- Rwy 8: NA- Obstacles.
- Rwy 17L: Standard with minimum climb of 743' per NM to 8000.
- Rwy 17R: Standard with minimum climb of 372' per NM to 9200.

SW-4, 03 OCT 2024 to 31 OCT 2024