

LOC/DME I-MHR 111.35 Chan 50(Y)	APP CRS 221°	Rwy Idg 7000 TDZE 98 Apt Elev 98
--	------------------------	---

ILS Y or LOC Y RWY 22L

SACRAMENTO MATHER (MHR)

TACAN required for procedure entry at BAB TACAN. For non-TACAN equipped aircraft, DME required.

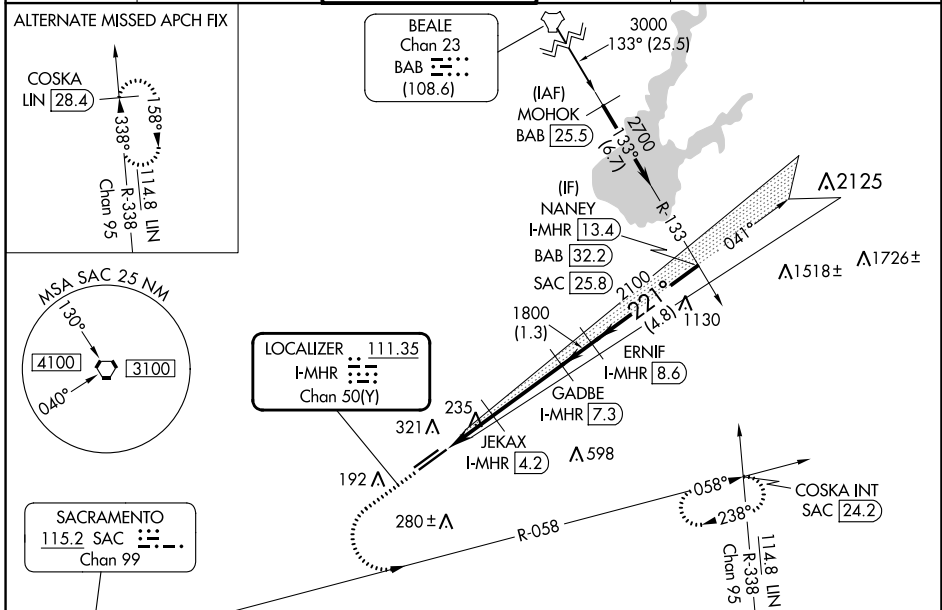
⚠ Circling NA northwest of Rwy 4R-22L. For inop ALS, increase S-ILS Cat E visibility to RVR 4000 and S-LOC Cat C/D/E visibility to RVR 6000.

⚠ *RVR 1800 authorized with use of FD or AP or HUD to DA. (NA when using Sacramento Exec altimeter setting).

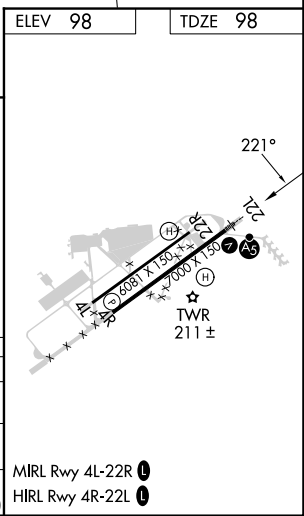
MALS R

MISSED APPROACH: Climb to 1000, then climbing left turn to 3500 on heading 090° and SAC VORTAC R-058 to COSKA INT/ SAC 24.2 DME and hold, continue climb-in-hold to 3500.

ATIS 118.325	NORCAL APP CON 127.4 317.5	MATHER TOWER ★ 120.65 (CTAF) 0 282.25	GND CON 121.85 307.9	CLNC DEL 121.85 307.9	UNICOM 122.95
------------------------	--------------------------------------	---	--------------------------------	---------------------------------	-------------------------



ELEV 98	TDZE 98
1000	3500
hdg 090°	SAC R-058
COSKA INT	NANNEY I-MHR 13.4
ERNIF I-MHR 8.6	GADBE I-MHR 7.3
JEKAX I-MHR 4.2	I-MHR 2.1
I-MHR 3.2	I-MHR 4.2
1800	1800
2100	2700
GS 3.00°	TCH 56
1.1 NM	1 NM
3.1 NM	1.3 NM
4.8 NM	
CATEGORY	A B C D E
S-ILS 22L	298/24 200 (200-½)
S-LOC 22L	500/24 402 (500-½) 500/40 402 (500-¾)
CIRCLING	560-1 462 (500-1) 600-1½ 800-2¼ 800-2½ 502 (600-1½) 702 (800-2¼) 702 (800-2½)



SW-2, 03 OCT 2024 to 31 OCT 2024

SW-2, 03 OCT 2024 to 31 OCT 2024