

LOC/DME I-MHR <b>111.35</b> Chan 50(Y)	APP CRS <b>221°</b>	Rwy Idg TDZE Apt Elev <b>7000</b> <b>98</b> <b>98</b>
--	------------------------	--

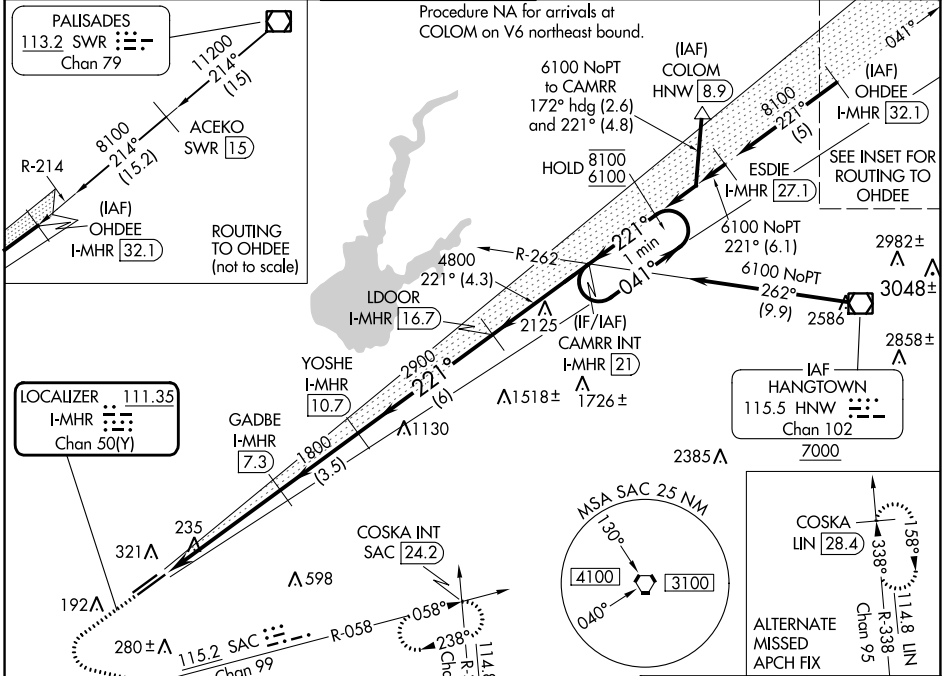
# ILS Z RWY 22L (SA CAT I & II)

SACRAMENTO MATHER (MHR)

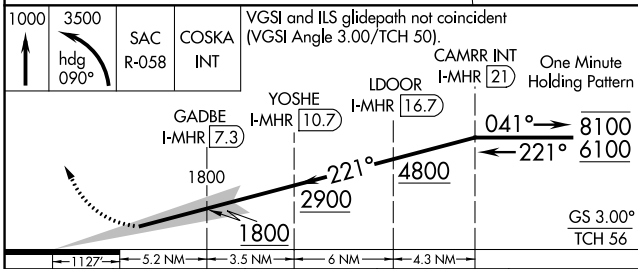
**Requires specific OPSPEC, MSPEC, or LOA approval. Procedure NA when tower closed.**

**MALSR**  
MISSED APPROACH: Climb to 1000, then climbing left turn to 3500 on heading 090° and SAC VORTAC R-058 to COSKA INT/SAC 24.2 DME and hold, continue climb-in-hold to 3500.

ATIS <b>118.325</b>	NORCAL APP CON <b>127.4 317.5</b>	MATHER TOWER ★ <b>120.65 (CTAF) 282.25</b>	GND CON <b>121.85 307.9</b>	CLNC DEL <b>121.85 307.9</b>	UNICOM <b>122.95</b>
------------------------	--------------------------------------	---	--------------------------------	---------------------------------	-------------------------

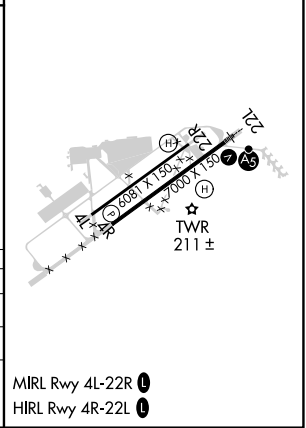


ELEV 98	TDZE 98
---------	---------



	A	B	C	D
SA CAT I		RA 136/14	150	DA 248
SA CAT II		RA 95/12	100	DA 198

## SA CATEGORY I & II ILS - SPECIAL AIRCREW & AIRCRAFT CERTIFICATION REQUIRED



SW-2, 03 OCT 2024 to 31 OCT 2024

SW-2, 03 OCT 2024 to 31 OCT 2024