

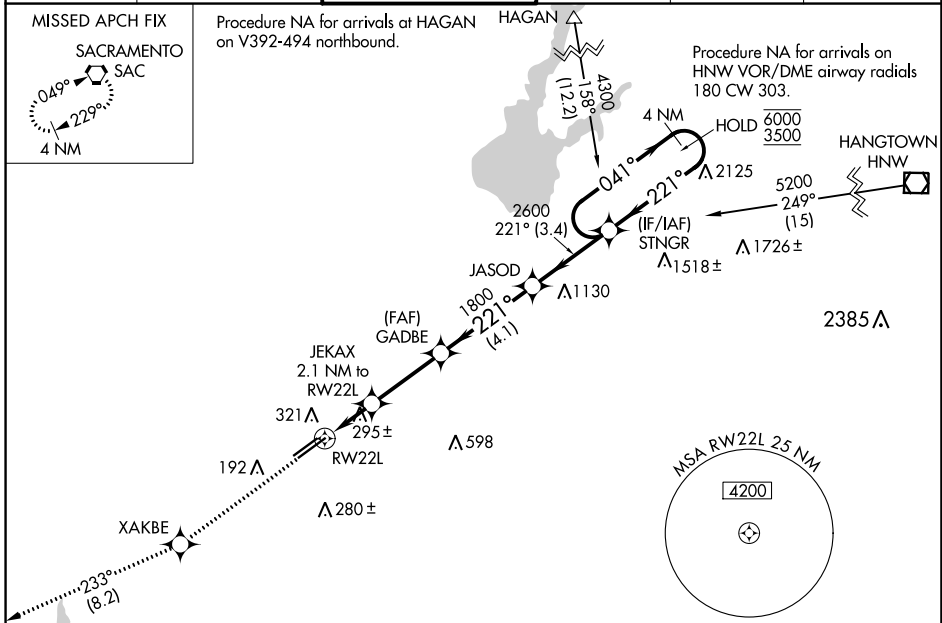
WAAS CH 40225 W22A	APP CRS 221°	Rwy Idg TDZE Apt Elev	7000 98 98
--	------------------------	-----------------------------	---------------------------------------

RNAV (GPS) RWY 22L

SACRAMENTO MATHER (MHR)

RNP APCH.	MALSRL	MISSED APPROACH: Climb to 3000 direct XAKBE and on track 233° to SAC VORTAC and hold.
<p>⚠ Circling NA northwest of Rwy 4R-22L. For uncompensated Baro-VNAV systems, LNAV/VNAV NA below -15°C or above 54°C. For inop ALS, increase LNAV/VNAV all Cats visibility to 1½ SM and LNAV Cat C/D visibility to 1¾ SM.</p>		

ATIS 118.325	NORCAL APP CON 127.4 317.5	MATHER TOWER ★ 120.65 (CTAF) 282.25	GND CON 121.85 307.9	CLNC DEL 121.85 307.9	UNICOM 122.95
------------------------	--------------------------------------	---	--------------------------------	---------------------------------	-------------------------

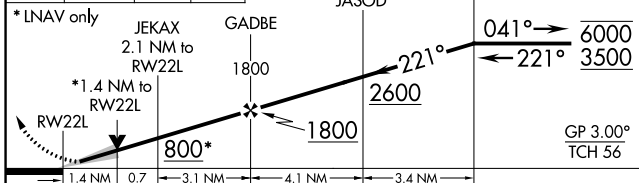


SW-2, 03 OCT 2024 to 31 OCT 2024

SW-2, 03 OCT 2024 to 31 OCT 2024

ELEV 98	TDZE 98
---------	---------

3000	XAKBE	tr 233°	SAC	VGSI and RNAV glidepath not coincident (VGSI Angle 3.00/TCH 50).
------	-------	---------	-----	--



CATEGORY	A	B	C	D
LPV DA		298-½	200 (200-½)	
LNAV/VNAV DA		517-¾	419 (500-¾)	
LNAV MDA	580-½	482 (500-½)	580-1	482 (500-1)
CIRCLING	580-1	482 (500-1)	600-1½ 502 (600-1½)	800-2¼ 702 (800-2¼)

