

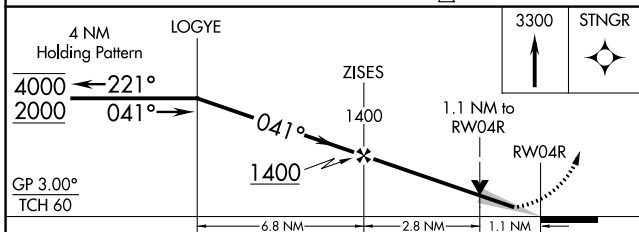
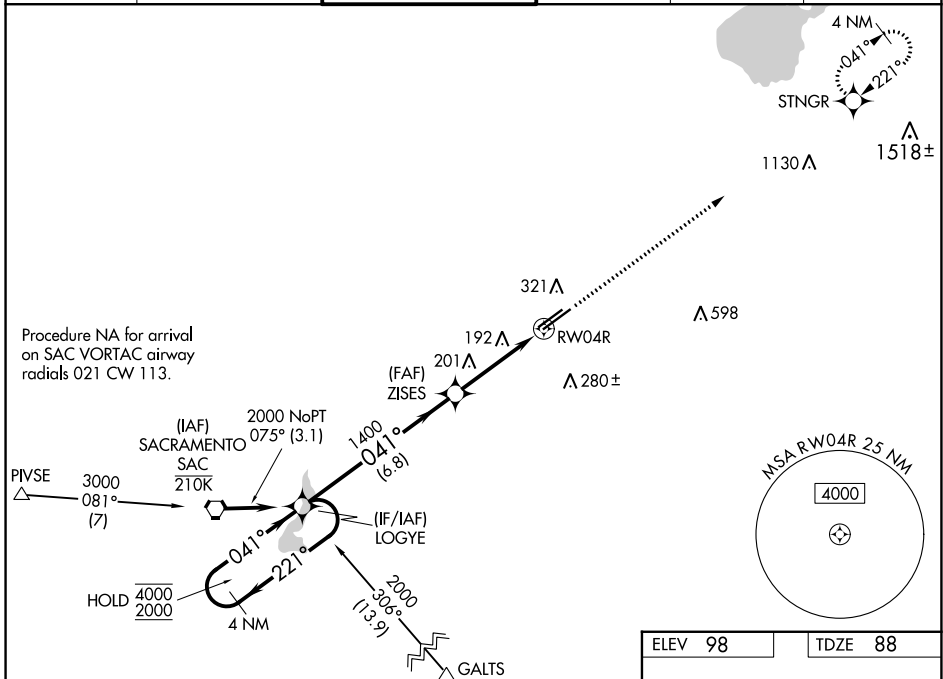
WAAS CH <b>45601</b> W04A	APP CRS <b>041°</b>	Rwy Idg TDZE Apt Elev	<b>7000</b> <b>88</b> <b>98</b>
---------------------------------	------------------------	-----------------------------	---------------------------------------

# RNAV (GPS) RWY 4R

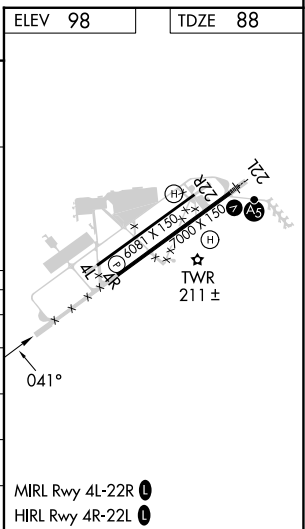
SACRAMENTO MATHER (MHR)

RNP APCH - GPS.	MISSED APPROACH: Climb to 3300 direct STNGR and hold. *Missed approach requires minimum climb of 220 feet per NM to 2500.
<b>▽</b> Circling NA northwest of Rwy 4R-22L. For uncompensated Baro-VNAV systems, LNAV/VNAV NA below -15°C or above 54°C.	

ATIS <b>118.325</b>	NORCAL APP CON <b>127.4 317.5</b>	MATHER TOWER ★ <b>120.65 (CTAF) 0 282.25</b>	GND CON <b>121.85 307.9</b>	CLNC DEL <b>121.85 307.9</b>	UNICOM <b>122.95</b>
------------------------	--------------------------------------	---	--------------------------------	---------------------------------	-------------------------



CATEGORY	A	B	C	D
LPV DA*		338-3/4	250 (300-3/4)	
LNAV/VNAV DA*		351-7/8	263 (300-7/8)	
LNAV MDA*		460-1	372 (400-1)	480-1 1/8 392 (400-1 1/8)
LNAV MDA	700-1	612 (700-1)	720-1 3/4 632 (700-1 3/4)	740-1 7/8 652 (700-1 7/8)
<b>C</b> CIRCLING	700-1	602 (700-1)	720-1 3/4 622 (700-1 3/4)	740-2 642 (700-2)



SW-2, 03 OCT 2024 to 31 OCT 2024

SW-2, 03 OCT 2024 to 31 OCT 2024