

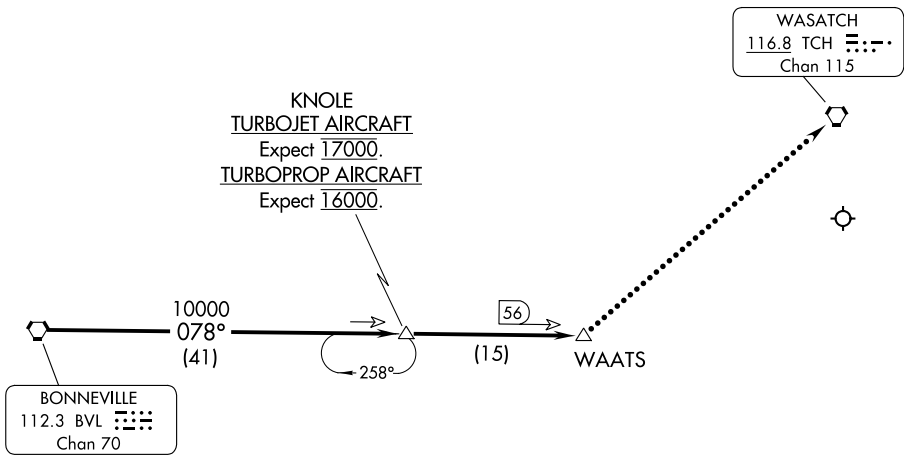
(BVL.BVL2) 24025

BONNEVILLE TWO ARRIVAL

AL-365 (FAA)

SALT LAKE CITY INTL (SLC)
SALT LAKE CITY, UTAH

SALT LAKE CITY APP CON
128.6 322.3
D-ATIS 124.75 125.625



KNOLE
TURBOJET AIRCRAFT
Expect 17000.
TURBOPROP AIRCRAFT
Expect 16000.

NOTE: DME required.
NOTE: Chart not to scale.

ARRIVAL ROUTE DESCRIPTION

From BVL VORTAC via BVL R-078 to WAATS, thence expect RADAR vectors to final approach course.

LOST COMMUNICATIONS: In the event of lost communications at WAATS, proceed direct TCH VORTAC. Maintain 13000' until TCH VORTAC.

BONNEVILLE TWO ARRIVAL

(BVL.BVL2) 31MAR16

SALT LAKE CITY, UTAH
SALT LAKE CITY INTL (SLC)

SW-4, 03 OCT 2024 to 31 OCT 2024

SW-4, 03 OCT 2024 to 31 OCT 2024