

LOC/DME I-UAT 111.9 Chan 56	APP CRS 164°	Rwy ldg 12000 TDZE 4223 Apt Elev 4227
---	------------------------	---

ILS RWY 16R (CAT II & III)

SALT LAKE CITY INTL (SLC)

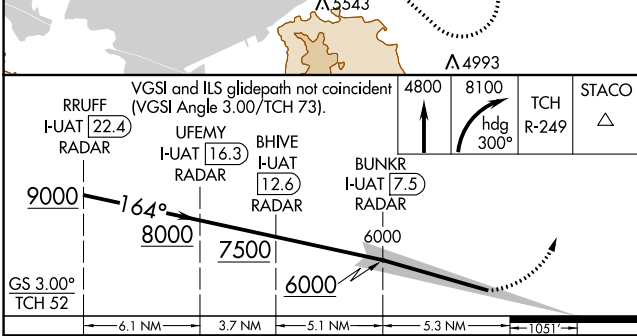
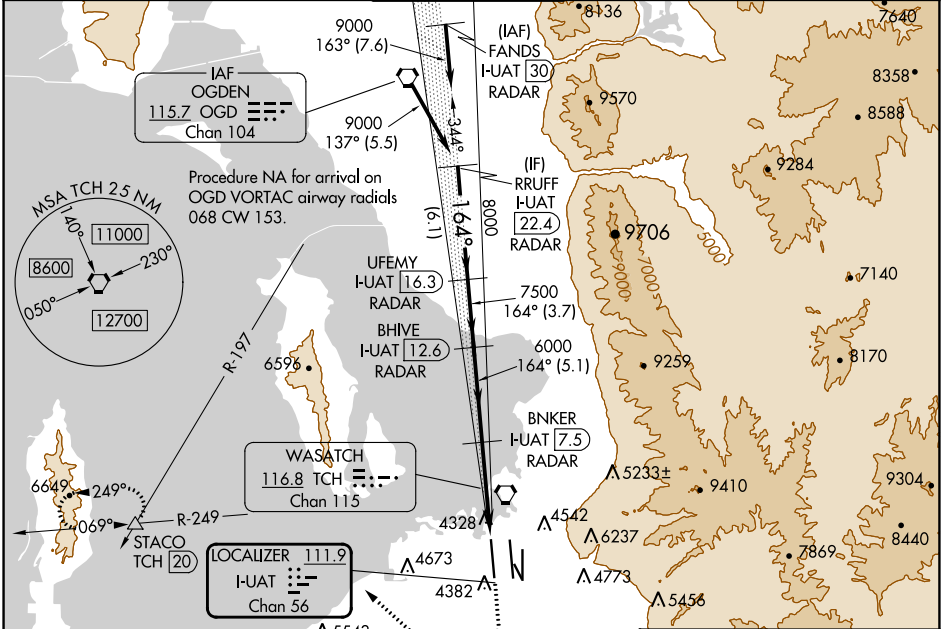
DME or RADAR required.

Simultaneous approach authorized.
CAT II: RVR 1000 authorized with specific OPSPEC, MSPEC, or LOA approval and use of autoland or HUD to touchdown.

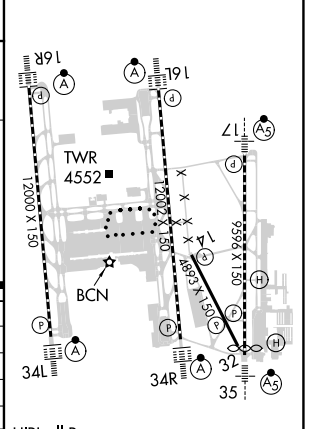
ALSF-2

MISSED APPROACH: Climb to 4800 then climbing right turn to 8100 on heading 300° and on TCH VORTAC R-249 to STACO INT/TCH 20 DME and hold.

D-ATIS 124.75 125.625	SALT LAKE CITY APP CON 125.7 284.6	SALT LAKE CITY TOWER 132.65 336.4	GND CON 123.775 348.6	CLNC DEL 127.3 379.975	CPDLC
---------------------------------	--	---	---------------------------------	----------------------------------	-------



ELEV 4227	D	TDZE 4223
-----------	---	-----------



HIRL all Rwws
TDZ/CL Rwws 16L, 16R, 17, 34L, 34R, and 35

CATEGORY	A	B	C	D
S-ILS 16R	CAT II RA 108/12 100 DA 4323			
S-ILS 16R		Cat IIIa	RVR 07	
S-ILS 16R		Cat IIIb	RVR 03	
S-ILS 16R		Cat IIIc	NA	

CATEGORY II & III ILS - SPECIAL AIRCREW & AIRCRAFT CERTIFICATION REQUIRED

SW-4, 03 OCT 2024 to 31 OCT 2024

SW-4, 03 OCT 2024 to 31 OCT 2024