

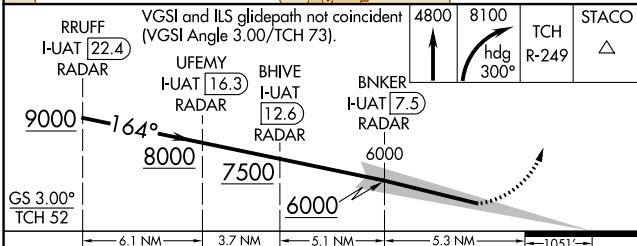
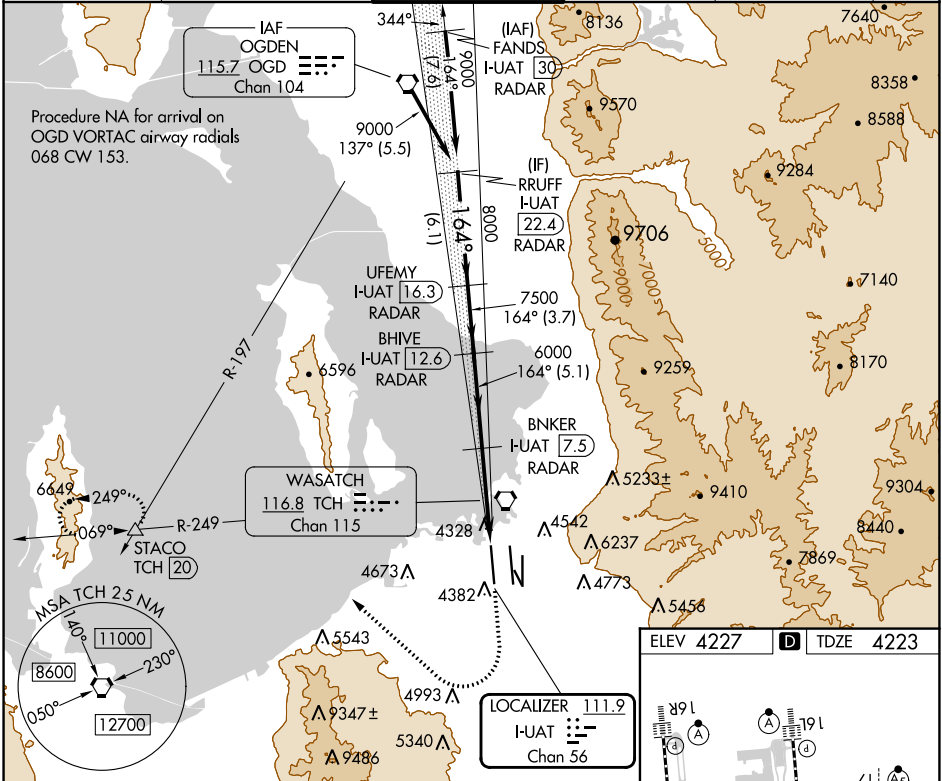
LOC/DME I-UAT 111.9 Chan 56	APP CRS 164°	Rwy ldg 12000	TDZE 4223	Apt Elev 4227
--	------------------------	-------------------------	---------------------	-------------------------

ILS RWY 16R (SA CAT I)

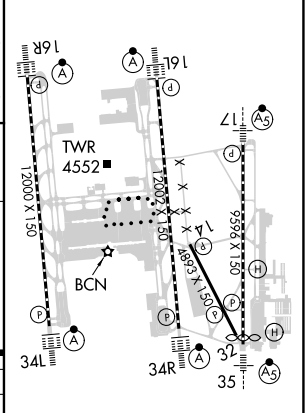
SALT LAKE CITY INTL (SLC)

DME or RADAR required.		ALSIF-2	MISSED APPROACH: Climb to 4800 then climbing right turn to 8100 on heading 300° and on TCH VORTAC R-249 to STACO INT/TCH 20 DME and hold.	
▼ Simultaneous approach authorized. Requires specific OPSPEC, MSPEC, or LOA approval and use of HUD to DH.		(A)		

D-ATIS 124.75 125.625	SALT LAKE CITY APP CON 125.7 284.6	SALT LAKE CITY TOWER 132.65 336.4	GND CON 123.775 348.6	CLNC DEL 127.3 379.975	CPDLC
---------------------------------	--	---	---------------------------------	----------------------------------	-------



ELEV 4227	TDZE 4223
-----------	-----------



CATEGORY	A	B	C	D
S-ILS 16R	RA 157/14 150 DA 4373			
SA CATEGORY I ILS - SPECIAL AIRCREW & AIRCRAFT CERTIFICATION REQUIRED				

HIRL all Rwws
TDZ/CL Rwws 16L, 16R, 17, 34L, 34R, and 35

SW-4, 03 OCT 2024 to 31 OCT 2024

SW-4, 03 OCT 2024 to 31 OCT 2024