

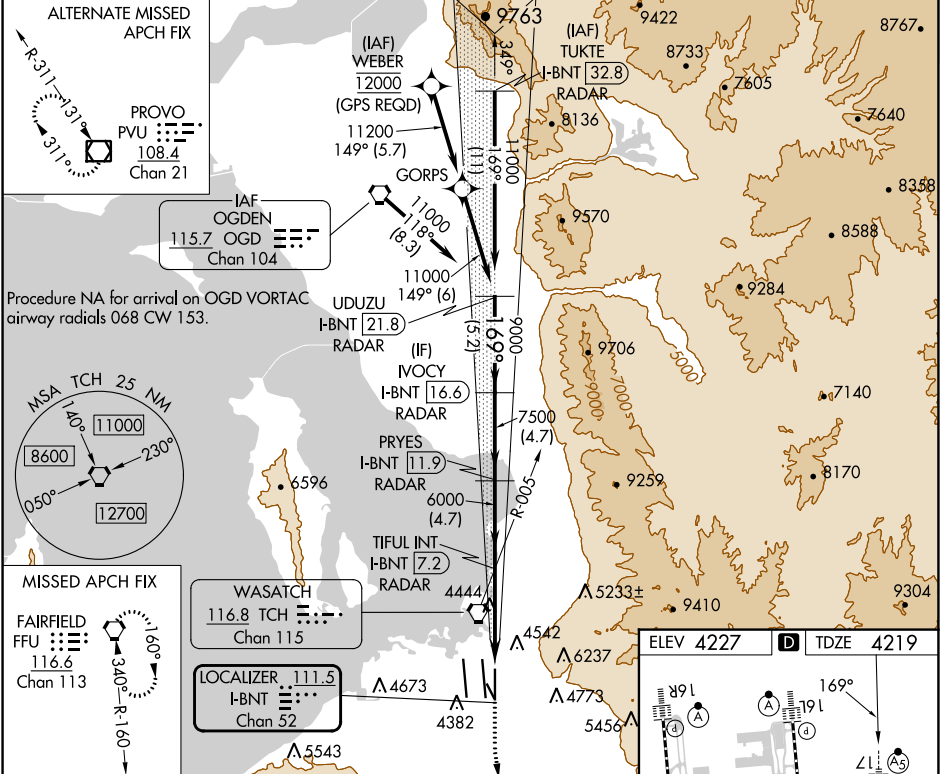
LOC/DME I-BNT 111.5 Chan 52	APP CRS 169°	Rwy Idg TDZE Apt Elev	9596 4219 4227
--	------------------------	-----------------------------	---

ILS or LOC RWY 17

SALT LAKE CITY INTL (SLC)

DME or RADAR required. Simultaneous approach authorized. For inop ALS, increase S-ILS 17 Cat E visibility to RVR 4000, increase S-LOC 17 Cat C/D/E visibility to 1 1/8 SM.	MALS R	MISSED APPROACH: Climb to 5800 then climbing left turn to 10000 direct FFU VORTAC and hold.
--	--------	---

D-ATIS 124.75 125.625	SALT LAKE CITY APP CON 125.7 284.6	SALT LAKE CITY TOWER 118.3 257.8	GND CON 121.9 348.6	CLNC DEL 127.3 379.975	CPDLC
---------------------------------	--	--	-------------------------------	----------------------------------	-------



SW-4, 03 OCT 2024 to 31 OCT 2024

SW-4, 03 OCT 2024 to 31 OCT 2024

UDUZU I-BNT 21.8 RADAR	VGSi and ILS glidepath not coincident (VGSi Angle 3.00/TCH 73).		5800	10000	FFU
11000	9000	7500	6000	6000	6000
GS 3.00° TCH 55					
	5.2 NM	4.7 NM	4.7 NM	4.1 NM	1.3

ELEV 4227 TDZE 4219

TWR 4552

BCN

34R

35

HIRL all Rwys TDZ/CL Rwys 16L, 16R, 17, 35, 34L, and 34R

FAF to MAP 5.4 NM					
Knots	60	90	120	150	180
Min:Sec	5:24	3:36	2:42	2:10	1:48

CATEGORY	A	B	C	D	E
S-ILS 17	4419/18 200 (200-1/2)				
S-LOC 17	4700/24	481 (500-1/2)	4700/50		481 (500-1)