

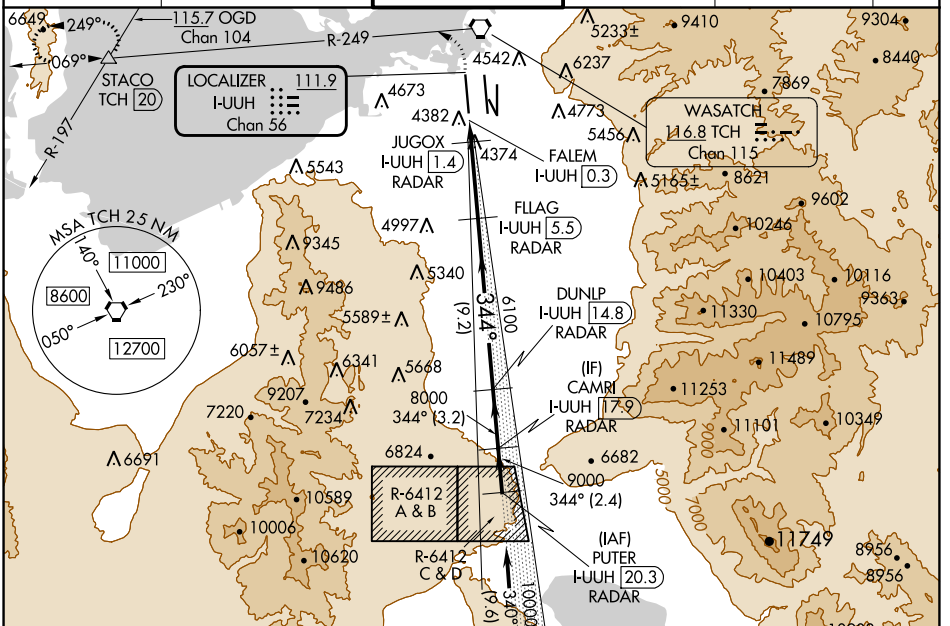
LOC/DME I-UUH <b>111.9</b> Chan 56	APP CRS <b>344°</b>	Rwy Idg TDZE <b>12000</b> <b>4229</b>	Apt Elev <b>4231</b>
--	------------------------	---	-------------------------

# ILS or LOC RWY 34L

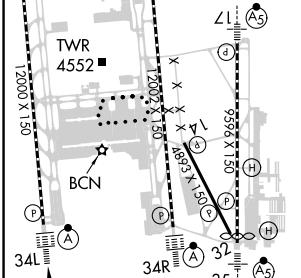
SALT LAKE CITY INTL (SLC)

RADAR required for arrivals at PUTER. DME or RADAR required.		ALSIF-2 	MISSED APPROACH: Climb to 800 then climbing left turn to 8100 on TCH VORTAC R-249 to STACO INT/TCH 20 DME and hold.
<p>Simultaneous approach authorized. For inop ALS, increase S-LOC 34L Cat C/D visibility to RVR 6000.</p>			

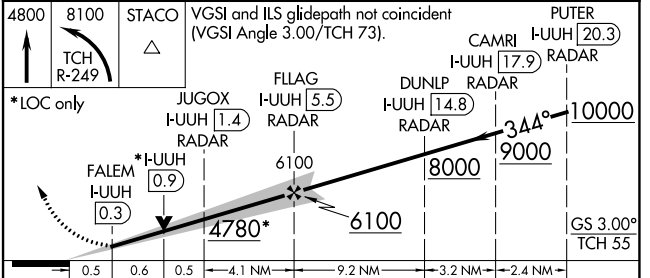
D-ATIS <b>124.75 125.625</b>	SALT LAKE CITY APP CON <b>125.7 284.6</b>	SALT LAKE CITY TOWER <b>132.65 336.4</b>	GND CON <b>123.775 348.6</b>	CLNC DEL <b>127.3 379.975</b>	CPDLC
---------------------------------	--	---	---------------------------------	----------------------------------	-------



ELEV 4231	TDZE 4229
HIRL all Rwys TDZ/CL Rwys 16L, 16R, 17, 35, 34L, and 34R	



FAF to MAP 5.3 NM					
Knots	60	90	120	150	180
Min:Sec	5:18	3:32	2:39	2:07	1:46



CATEGORY	A	B	C	D
S-ILS 34L	4429/18 200 (200-½)			
S-LOC 34L	4640/24	411 (500-½)	4640/40	411 (500-¾)

SW-4, 03 OCT 2024 to 31 OCT 2024

SW-4, 03 OCT 2024 to 31 OCT 2024