

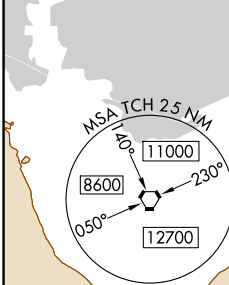
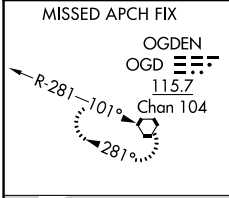
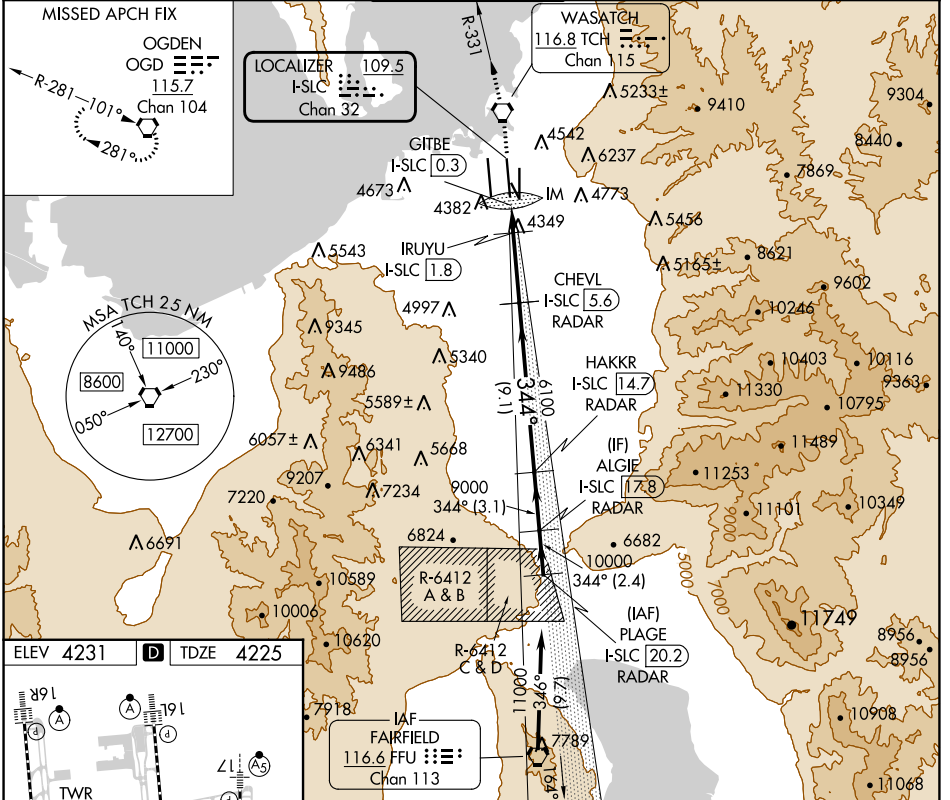
LOC/DME I-SLC 109.5 Chan 32	APP CRS 344°	Rwy Idg TDZE Apt Elev	12002 4225 4231
------------------------------------------	------------------------	-----------------------------	--------------------------------------------

ILS or LOC RWY 34R

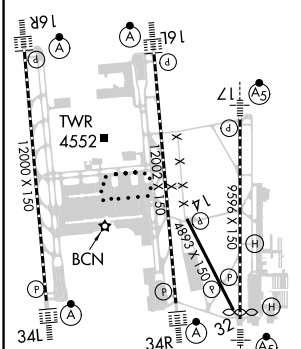
SALT LAKE CITY INTL (SLC)

DME required for LOC only.		ALSIF-2	MISSED APPROACH: Climb to 9000 direct TCH VORTAC and on TCH VORTAC R-331 to OGD VORTAC and hold.	
Simultaneous approach authorized.				

D-ATIS 124.75 125.625	SALT LAKE CITY APP CON 125.7 284.6	SALT LAKE CITY TOWER 119.05 257.8	GND CON 123.775 348.6	CLNC DEL 127.3 379.975	CPDLC
---------------------------------	----------------------------------------------	---------------------------------------------	---------------------------------	----------------------------------	-------

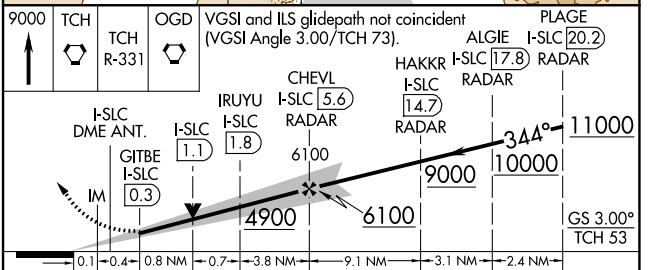


ELEV 4231	D	TDZE 4225
-----------	----------	-----------



HIRL all Rwys
TDZ/CL Rwys 16L, 16R, 17, 35, 34L, and 34R

FAF to MAP 5.3 NM					
Knots	60	90	120	150	180
Min:Sec	5:18	3:32	2:39	2:07	1:46



CATEGORY	A	B	C	D
S-ILS 34R	4425/18 200 (200-½)			
S-LOC 34R	4700/24	475 (500-½)	4700/50	475 (500-1)

SW-4, 03 OCT 2024 to 31 OCT 2024

SW-4, 03 OCT 2024 to 31 OCT 2024