

SPANE EIGHT ARRIVAL

AL-365 (FAA)

SALT LAKE CITY INTL (SLC)
SALT LAKE CITY, UTAH

SW-4, 03 OCT 2024 to 31 OCT 2024

ARRIVAL ROUTE DESCRIPTION

HELPR TRANSITION (HELPR.SPANE8): From over HELPR on FFU R-100 to SPANE, thence

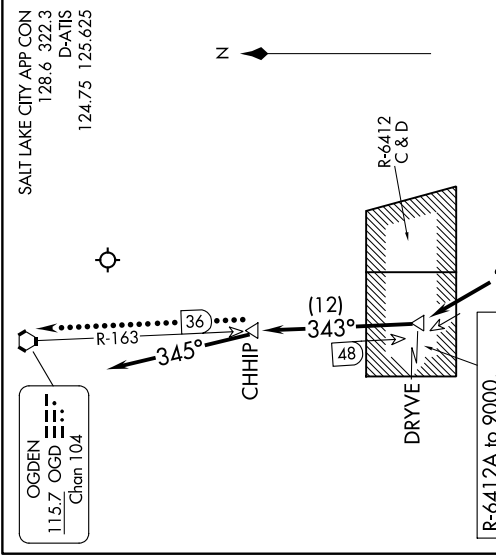
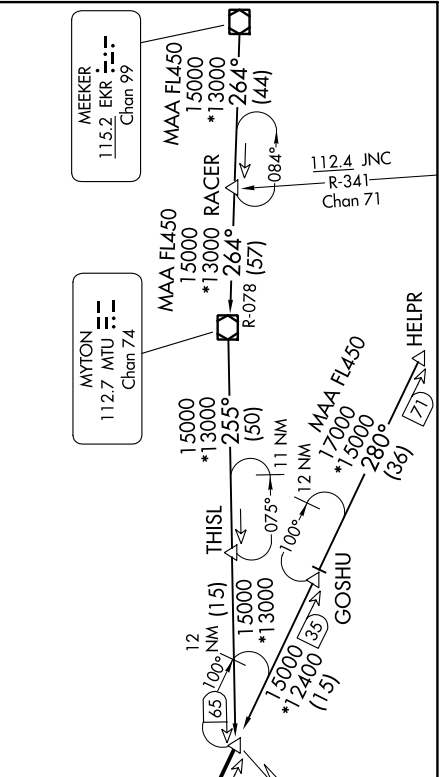
MEEKER TRANSITION (EKR.SPANE8): From over EKR VOR/DME on EKR R-264 to RACER, then on EKR R-264 and MTU R-078 to MTU VOR/DME, then on MTU R-255 to SPANE, thence

LANDING NORTH: From SPANE on FFU R-100 to BOAGY, then to FFU VORTAC. Expect ILS RWY 34R approach.

LANDING SOUTH: From SPANE on FFU R-100 to BOAGY, then to FFU VORTAC, then on FFU R-314 to DRYVE, then on OGD R-163 to CHHIP. After CHHIP, fly heading 345° for vectors to ILS or Visual RWY 16R approach.

LOST COMMUNICATIONS

LANDING SOUTH: In the event of lost communications, at CHHIP proceed direct OGD VORTAC. Maintain 12000 until OGD VORTAC.



SALT LAKE CITY APP CON
128.6 322.3
D-ATIS
124.75 125.625

OGDEN
115.7 OGD Chan 104

FAIRFIELD
116.6 FFU Chan 113

**R-6412A to 9000,
R-6412B 9000 to 10000
by NOTAM
Salt Lake City Tower**

**VERTICAL NAVIGATION
PLANNING INFORMATION**

LANDING NORTH: Expect 16000
LANDING SOUTH: Expect 17000

NOTE: DME required.
NOTE: Chart not to scale.

SPANE EIGHT ARRIVAL

(SPANE.SPANE8) 16MAY24

SALT LAKE CITY, UTAH
SALT LAKE CITY INTL (SLC)

SW-4, 03 OCT 2024 to 31 OCT 2024