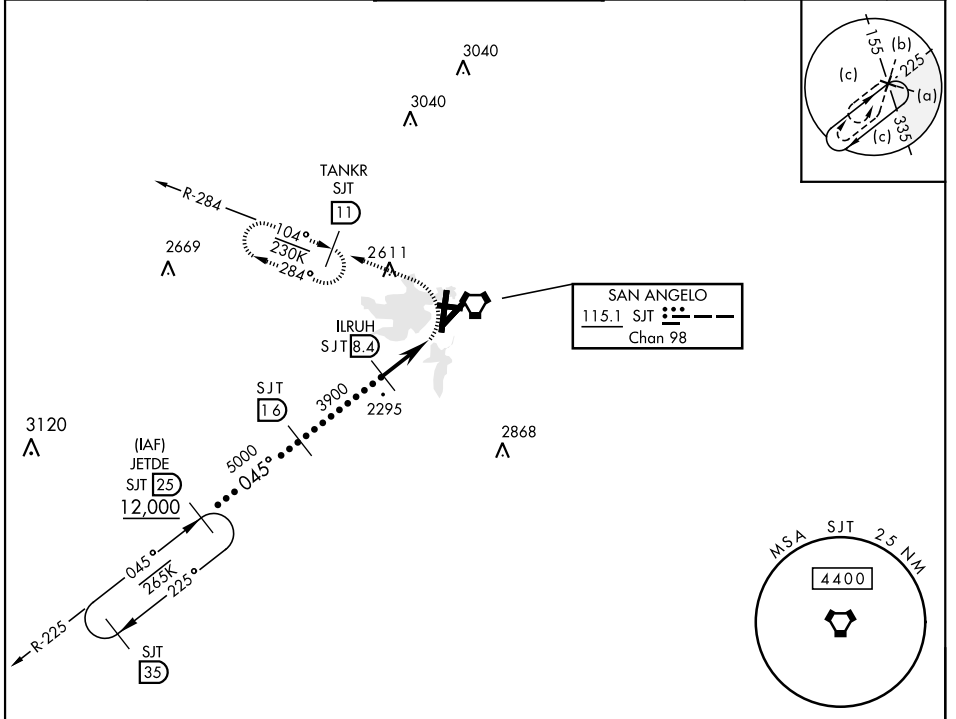


HI-VOR/DME or TACAN RWY 3

VORTAC SJT 115.1 Chan 98	APCH CRS 045°	Rwy Idg TDZE 1917 Arprt Elev 1919	AL-367 [USAF]	SAN ANGELO RGNL MATHIS FLD (KSJT)	
RADAR required. * Circling NA for CAT E west of Rwy 18-36.			MALSR A5	MISSED APPROACH: Climbing left turn to 4400 on SJT VORTAC R-284 to TANKR 11 DME and hold.	
ATIS 128.45 319.0	SAN ANGELO APP CON 125.35 354.1	MATHIS TOWER ★ 118.3 0 (CTAF) 284.7	GND CON 121.9 348.6	UNICOM 122.95	ASR



EMERG SAFE ALT 100 NM 5100

JETDE [25]	12,000	045°	5000	ILRUH [8.4]	3900	4400 SJT R-284	TANKR SJT [11]
3.23° TCH 50						5.1 NM	0.5 NM
CATEGORY	C		D		E		
S-3	2420-1	503	(600-1)		2420-1¼ 503 (600-1¼)		
CIRCLING*	2460-1½ 541 (600-1½)		2480-2 561 (600-2)		2640-2½ 721 (800-2½)		

ELEV 1919	D	TDZE 1917
Rwy 18 Idg 7152'		

The diagram shows the RWY 18 Idg (7152 ft) with a TWR at 1990 ft. It includes a MSA for SJT with a 2.5 NM radius and a 4400 ft ceiling. Distances and altitudes are marked: 1921 ft, 2042 ft, 36 ft, 0.36 NM, 0.48 NM, 0.48 x 75, 0.48 x 150, 0.48 x 150, 5940 x 150, and 0.45 x 5.6 NM from FAF.

HI-VOR/DME or TACAN RWY 3

SC-3, 03 OCT 2024 to 31 OCT 2024

SC-3, 03 OCT 2024 to 31 OCT 2024