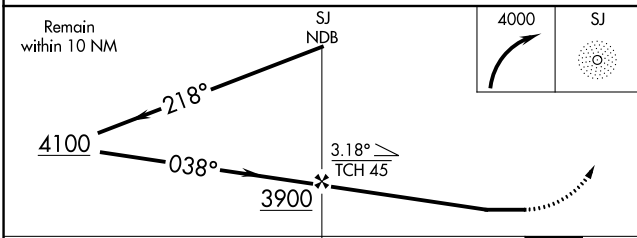
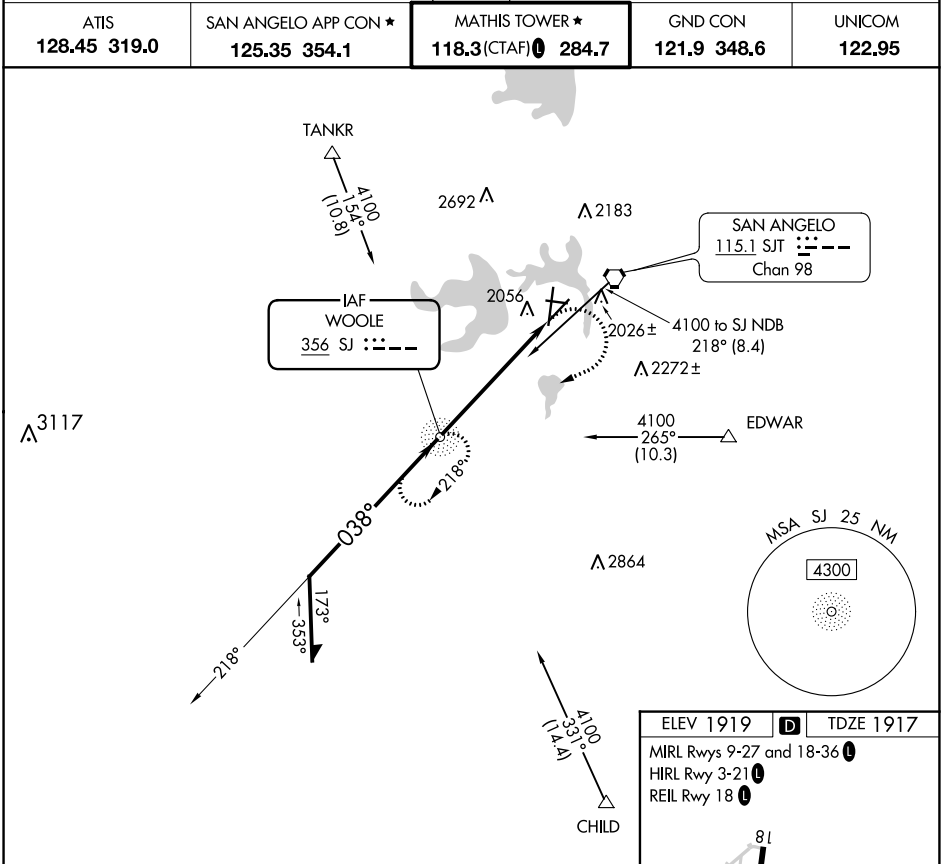


NDB SJ 356	APP CRS 038°	Rwy Idg TDZE Apt Elev	5940 1917 1919
----------------------	------------------------	-----------------------------	---

NDB RWY 3

SAN ANGELO RGNL/MATHIS FLD (SJT)

<p>For inop ALS, increase Cat A/B visibility to RVR 5500, and Cat C/D to 2 SM.</p>		<p>MISSED APPROACH: Climbing right turn to 4000 direct SJ NDB and hold.</p>		
			<p>ATIS 128.45 319.0</p>	<p>SAN ANGELO APP CON ★ 125.35 354.1</p>



ELEV 1919	D	TDZE 1917
MIRL Rwy 9-27 and 18-36		
HIRL Rwy 3-21		
REIL Rwy 18		

038° 5.7 NM from FAF	038° 5.7 NM from FAF
FAF to MAP 5.7 NM	

Knots	60	90	120	150	180
Min:Sec	5:42	3:48	2:51	2:17	1:54

SC-3, 03 OCT 2024 to 31 OCT 2024

SC-3, 03 OCT 2024 to 31 OCT 2024