

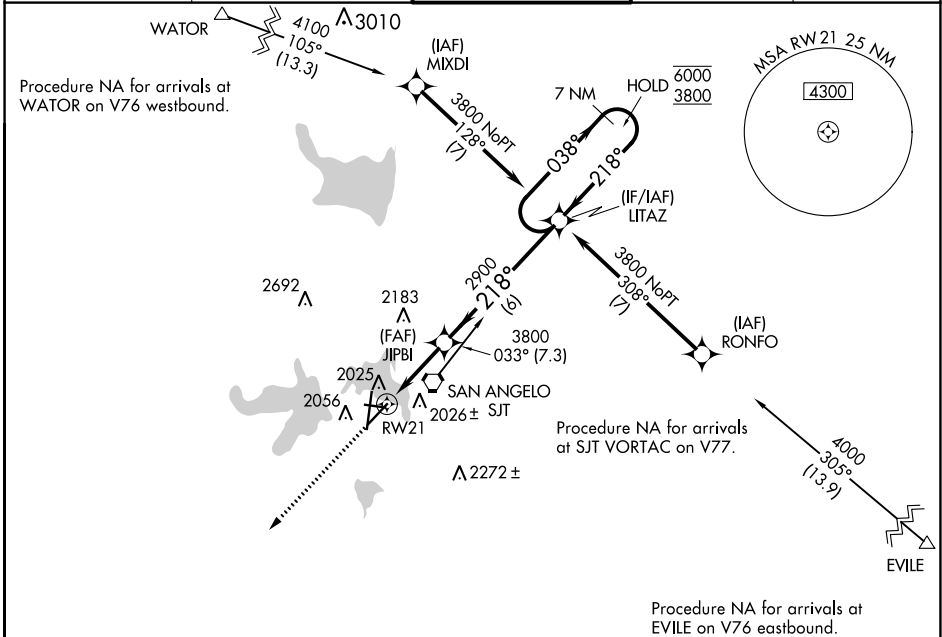
WAAS CH 81817 W21A	APP CRS 218°	Rwy Idg TDZE Apt Elev	5940 1906 1919
--	------------------------	-----------------------------	---

RNAV (GPS) RWY 21

SAN ANGELO RGNL/MATHIS FLD (SJT)

RNP APCH - GPS.		MISSED APPROACH: Climb to 4400 direct HEXPE and hold.		
For uncompensated Baro-VNAV systems, LNAV/VNAV NA below -8°C or above 54°C. Circling NA for Cat E west of Rwy 18-36.				

ATIS 128.45 319.0	SAN ANGELO APP CON ★ 125.35 354.1	MATHIS TOWER ★ 118.3 (CTAF) 284.7	GND CON 121.9 348.6	UNICOM 122.95
-----------------------------	---	---	-------------------------------	-------------------------

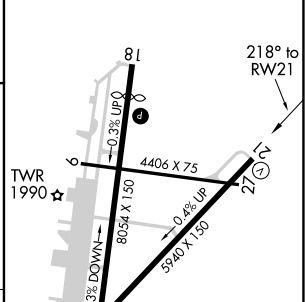
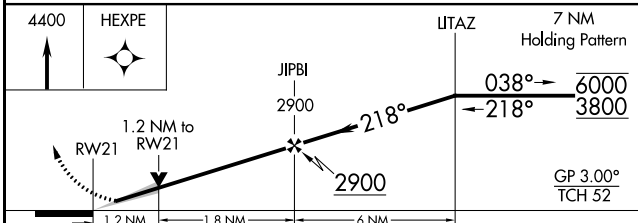


SC-3, 03 OCT 2024 to 31 OCT 2024

SC-3, 03 OCT 2024 to 31 OCT 2024



ELEV 1919	D	TDZE 1906
-----------	----------	-----------



CATEGORY	A	B	C	D	E
LPV DA		2106-1	200 (200-1)		
LNAV/VNAV DA		2250-1	344 (400-1)		
LNAV MDA	2340-1	434 (500-1)	2340-1¼	434 (500-1¼)	
C CIRCLING	2360-1 441 (500-1)	2380-1 461 (500-1)	2500-1½ 581 (600-1½)	2700-2½ 781 (800-2½)	2700-2¾ 781 (800-2¾)

TWR 1990	81	218° to RWY 21
36	27	
GP 3.00°	TCH 52	
REIL Rwy 18	MIRL Rwy 3-21	MIRL Rwy 9-27 and 18-36