


WAAS CH <b>77517</b> <b>W03A</b>	APP CRS <b>038°</b>	Rwy Idg TDZE Apt Elev	<b>5940</b> <b>1917</b> <b>1919</b>
--	------------------------	-----------------------------	---

# RNAV (GPS) RWY 3

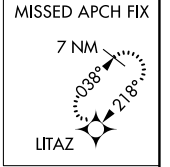
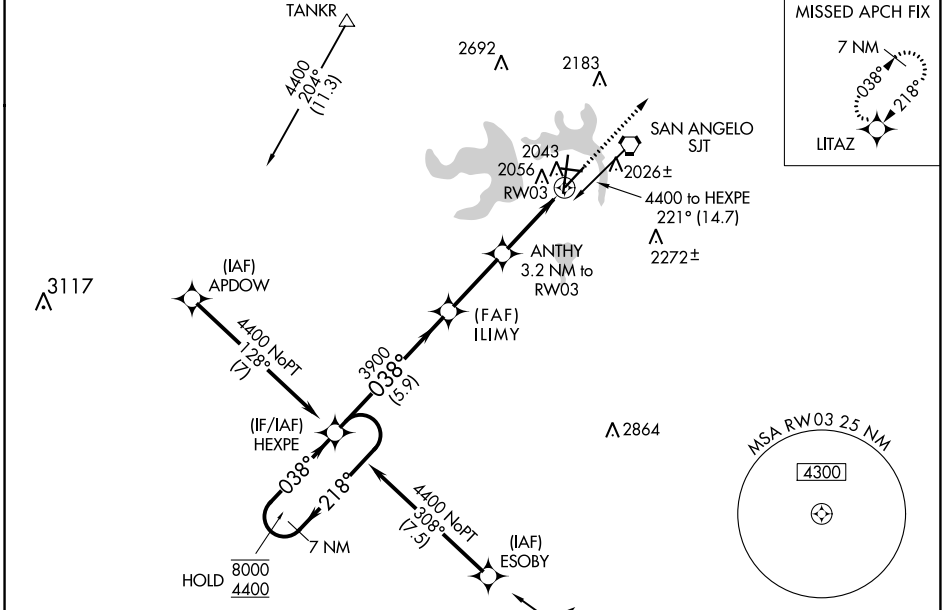
SAN ANGELO RGNL/MATHIS FLD (SJT)

RNP APCH - GPS

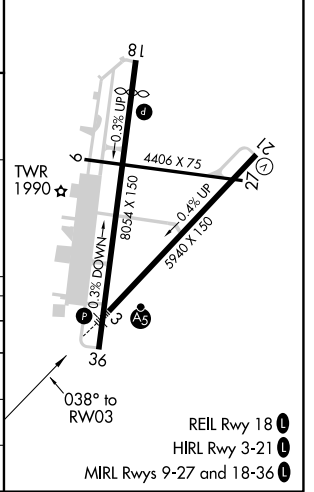
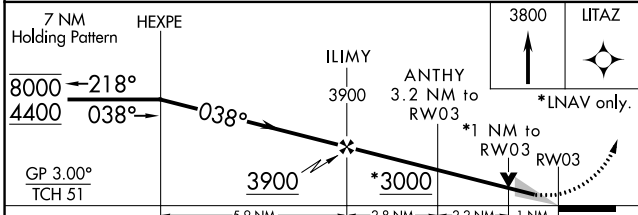
▼ For uncompensated Baro-VNAV systems, LNAV/VNAV NA below -8°C or above 54°C.  
 ▲ For inop ALS, increase LPV Cat E visibility to RVR 4000, and LNAV/VNAV Cat E and LNAV Cat E visibility to RVR 6000. Circling NA for Cat E west of Rwy 18-36.  
 ASR # RVR 1800 authorized with use of FD or AP or HUD to DA.

MALSR  MISSED APPROACH: Climb to 3800 direct LITAZ and hold.




ATIS <b>128.45 319.0</b>	SAN ANGELO APP CON * <b>125.35 354.1</b>	MATHIS TOWER * <b>118.3(CTAF) 284.7</b>	GND CON <b>121.9 348.6</b>	UNICOM <b>122.95</b>
-----------------------------	---	--	-------------------------------	-------------------------



ELEV 1919	<b>D</b>	TDZE 1917
-----------	----------	-----------



CATEGORY	A	B	C	D	E
LPV DA #	2117/24		200 (200-½)		
LNAV/VNAV DA	2323/35		406 (500-¾)		
LNAV MDA	2300/24 383 (400-½)		2300/35 383 (400-¾)		
<b>C</b> CIRCLING	2360-1 441 (500-1)	2380-1 461 (500-1)	2500-1½ 581 (600-1½)	2700-2½ 781 (800-2½)	2700-2¾ 781 (800-2¾)

REIL Rwy 18   
 HIRL Rwy 3-21   
 MIRL Rws 9-27 and 18-36 

SC-3, 03 OCT 2024 to 31 OCT 2024

SC-3, 03 OCT 2024 to 31 OCT 2024